



INDIVIDUAL GIFTS (\$100-\$499) cont'd			
Elizabeth Fleming	Mary B. Jordan	Francesca Marzari and Stuart Carmichael	Sandra Rose
Alana Flexman	Susan Julnes	Pauline Mason	Joseph Rosen
Janet Flowers	Heather Kaart	Elisabeth and Norbert Maurer	Dallas Ross and Jo-Ann Turner
Peter and Gillian Fograscher	Eleni Kassaris	Alden and James May	Marilyn Ross
Lily Fong	Ursula Kasting	Norm Mayr	Victoria J. Ross
Jone Fraser	Anne Keable	James Mennie	The Rossnagel Family
Elyse Freeborn	Kathy Kealey	Catherine Mezei	Trina and Stuart Rowles
Carina Fu	Nancy Kent	Joan Michalson	David Rowntree
Diane Fulton	Elizabeth and Rudy Kerlaan	Lynn Middleton	Keith Roy
Margaret Gallagher	Azmina Khimji	Roy Millen	Lisa Rupert
Joy Gaze	Allison (Mia) Killam	Alastair Miller	Pat Sam
Kate Gerson	Jill and Mike Killeen	Dianne Miller	Dawn Sandberg
Trudy Gibson	Judith King	Vera Milner	Christie Sandford
Dr. John H. V. Gilbert	Patricia Kirkham	Jane Milton	Kiran Sandhu
Genise Gill	Karin Kirkpatrick	Marnie Mitchell	Jenny Sandy
Tricia Gilliss	Mary Ann Kmetic	Leslie Mitton	Sheena Sargeant
Carol Gordon	Susan and Lyall Knott	Susan and Lyall Knott	Anton Scamvougeras
Susan Green	Susan Koch	Andy Molloy	Patsy Scarse
Marion Greene	Ellen Konnert	Peter Molnar	Jen Schaeffers
Elaine Grenon	Mollie Korsch	Carolyn Montgomery	Duncan Davies
Glen Grierson	Trevor Kramer	Diana Moore	James Schmidt
Andrew and Petulla Grieve	Marilyn Krell	Helen Morris	Dorothy Scott
Dominique Gross	Kacey Krenn	Kyle Morton	Sheldon Scott
The Honourable Mr. Justice Joel R. Groves	Moyna Krusell	Nancy Mudford	Danielle Segal
Joanne Gum	Tish Kumar	Gottfried and Beverley Muench	Paule Seguin
Markus Haapasalo	Leora Kuttner	David Murphy	Peter Selnar
Karen Hamberg	Miyako Laidlaw	Lois Nahirney	Barbara Selwood
Elizabeth and Soren Hammerberg	Winnie Lai-Fong	Anuradha Nayar	Israel Z. Shafran
Cassandra Hanson and Greg Cassap	Virginia Irene Langdon	Robert Neault	TJ Shariff
Trudy Harkness	Stephen Leahy	Allan Newbury	Joe Shaw
Dale Harper	Jennifer Leask	Shindy Ng	Karen and Michael Shoemaker
Janine Harriman	Nova Leckie	Richard Nichols	Karen Shuster
Betty and Douglas Harrison	Shelley Lederman	Lorna Nimmons	Dr. Cecil Sigal
Alison Hart	Amy Lee	Kingsley G. Noel	Krista Simon
Joanne Hausch	Angela Y. Lee	Stephen Simpson	Daisy Yang
Sue Hawk	Marette Lee	Nathalie Sinclair	Michael Yao
Suzanne Hawkes	Jacqueline Lee-Son	Christine Sixta	Marlis and Yasser Yassin
Gloria Hayter	Heather Lehmann and Barry Hyde	Ursula Skihar	Danny Hon Ming Yu
Ross Hedley	Patrick Lermite	Amanda Skoll	25 Anonymous Donors
Cynthia Henkel	Dr. Douglas and Marion Oldenburg	Frances Sloan Sainas	
Byron Henry	Jean Oriente	Chelsea Smith	
Reva Henslowe	Alison Orr	Gillian and Russell Smith	
Cheryl Herman	Tracey Orr	Heather Smith	
Alan Hetherington	Alison Osborne	John Smith	
Teresa Heung	Dorothy Osborne	Karin Smith	
Miriam Hildahl	Baerbel Ostertag	Margaret Smith	
Joan Hill	Sharon Park	Michelle Smith	
Catriona Hippman and Nick Alexander	Kathy Parslow	Cynthia Soboren	
Lois Hollstedt	Sandra and Brian Paterson	Joanna Sofield	
Terry Hooge	George and Penny Pedersen	Rosalie Soregaroli	
Judith Horne	Jens Jorn Petersen	Teresa Sparling	
Ani Hosepyan	Frances Picherack	Martin Spencer	
Ann Howe	Angela Pilarinos	Lynn St. John	
Ivy Hubbard	Julie and Marty Pilcher	Frances Statham	
Rowena Huberman	Jude Pipher	Jean Stewart	
Susan Hughes	David Podmore	Rosemary Stiell	
Karin Humphries	Marilyn and Jack Pomfret	Lesley Stowe and Geoffrey Scott	
Sandra Hunt-Chomyn	Wendy Porter	Gloria Sully	
Laurie and Dan Husband	Ann Mary Quarandillo	Margaret Sutcliffe	
Huong Tien Huynh	Louise and Robert Quart	Shauna Sylvester and Ross Gentleman	
Carol and Michael Jackson	Lana Quinn	Susan Szczawinska	
Lynda Jackson	Vera Radyo	Danielle Tadman	
Sandra Jakob	Marion Ralston	Elizabeth Wreford Tait	
Roumina Jamal	Robert Randall	Peter Talbot	
Laura Jamieson	Nancy Ranger	Debra Tarigan and Stephen Gowan	
Barbara Janzen	Joan Redfern	Carole Tarlington	
Kirsten Jenkins	Elise and Richard Rees	Melody Taylor	
Kenneth and Sharon Johns	Betty Ann Reid	Diana Tchakalian	
Denise Johnson	George, Wendy and George Reifel	Fiona Temple	
Ann Johnston	Theresa Reinhart	Sabine Thoeing	
Gladys and Allan Johnston	Doug Reynolds	Marcia Helen Thomson	
Eleanor Jones	Muriel and Dal Richards	Violet and Konrad Tittler	
Ethel Jones	Vicki Ringe	Shirai Tobin	
Kathleen Jones	Celine Rioux	Marion Town	
	Linda Roberts	Natalie Trudel	
	Rebecca Robinson-Bauer		
	Marlene Rockliff		

McKesson Technology Solutions	Social Media Miss604.com
Methanex	In Kind Donors 14 Hands Winery
The Order of Improved Men	Aerocar Service
Plenary Group	Jennifer Cameron, Voice Actor
Real Estate Board of Greater Vancouver - West Side Division	Emily Clarke, Television, Radio & Events Presenter/Entertainment Reporter
Sherry Tryssenaar - Party with a Purpose	Fader Mountain Sound
TELLUS Lego Fundraiser	Hotfusion Communications Inc.
Twist Fashions	Maison Clement Macarons
UBC Bookstore	Mink Chocolates
Watertrax	Playback Films
Westside Montessori Academy	Trinity Media Productions
Weyerhaeuser Diaper Donation	WestJet
Whole Foods Market - Taste of Thanksgiving	
2014 Women of Distinction Awards	
Presenting Sponsor Scotiabank	
Gold Sponsors	
BC Housing	
BC Hydro	
Clio	
CN	
Goldcorp	
Industrial Alliance Insurance and Financial Services Inc.	
Port Metro Vancouver	
SAP Canada Inc.	
TD Bank Group	
Silver Sponsors	
As You Like It Media	
BC Nurses' Union	
Go 2 Productions	
Hemlock Printers	
Imagine That Events	
McCarthy Tétrault LLP	
McMillan LLP	
Sun Life Financial	
Vancity	
Bronze Sponsors	
Mercury Launch & Tug	
Philips, Hager & North Investment Management	
PwC Canada	
Distinguished Partners	
BDO Canada LLP	
Blake, Cassels & Graydon LLP	
Bull, Housser & Tupper LLP	
Canucks Sports & Entertainment	
Fulmer Capital Partners Inc.	
Harris & Company LLP	
Highland West Capital Ltd.	
Madam Justice Miriam Maisonneville	
RAMMP Hospitality Brands Inc.	
Sunblest Commodities Inc.	
Vancouver Airport Authority	
Media Sponsors CKNW AM 980	
Global BC	

We have done our best to include everyone who made a contribution of \$100 or more between January 1 and December 31, 2014. We apologize for any errors or omissions.

Please contact us at 604.895.5766 if we have made an error in your acknowledgement.

MESSAGE FROM THE CHAIR AND THE CEO

2014 was another busy year for YWCA Metro Vancouver and these are just some of the highlights.

We launched STRIVE, a program to support youth-in-care ages 17-24 during another difficult transition – aging out of the foster care system. According to the Ministry of Children and Family Development's (MCFD) Residential Review Project, BC youth may have had up to 10 foster care placements while in care. In addition to carrying possible emotional trauma from childhood, youth leaving care often lack close family and peer support networks and the life-skills to help them transition into adulthood. Once out of foster care, these youth have limited access to education, higher rates of unemployment and are more likely to suffer from poor mental health outcomes. With the generous support of MCFD, the YWCA Strive program provides basic life and employability-skills that help youth move successfully out of foster care and into their adult lives.

YWCA Metro Vancouver has also been supporting youth through our after-school youth education programs for more than ten years. These programs offer Grade seven girls and boys the opportunity to develop valuable connections with peers, build leadership skills, give back to their communities and navigate through the difficult choices they face as they transition to high school. The intergenerational model provides youth with the tools they need to make positive choices in their lives by

teaching them about healthy relationships, body image and digital literacy. This year, we realized that, in order to fully reach young people, we needed to know how they are experiencing the issues we are advocating for, and so we created the YWCA Youth Advisory Council. It will help us lead our 3rd annual media literacy conference in 2015.

We continue to support single mothers and their children in achieving long-term economic independence by providing seven safe, affordable housing communities across Metro Vancouver. We made great progress on the YWCA Cause We Care House, a new long-term housing community for single mothers and their children in the Downtown Eastside/Strathcona area. The project, a partnership with the City of Vancouver and the Vancouver Public Library, will feature 21 units of housing and community programming space over the new náca?mat ct Strathcona branch of the Vancouver Public Library and will open its doors in the Spring of 2016. We were also pleased to announce two new housing developments: YWCA Como Lake Mews in Coquitlam and the YWCA Fire Hall Project in South Vancouver. Both communities will provide much needed, safe, affordable housing for low-income single mothers and their families.

At the YWCA, balance is a key part of everything we do. Our programs support women to achieve balance in their lives by removing barriers to economic independence like housing and child care. Organizationally, the YWCA's commitment to work/life balance is much more than

just words on paper. It is a fundamental aspect of our culture, because we know the important part this plays in leading a balanced life. Clients, program participants, staff and volunteers are encouraged to use the YWCA Health + Fitness Centre and receive complimentary passes and memberships to make it accessible. On a broader level, we are proud to tell you that we were recognized as one of the Top Small and Medium-sized Businesses to Work For in Canada this year. Work/life balance is also a key social issue – and addressing it requires a broad-based systemic response. In partnership with the UBC Human Early Learning Partnership, we raise awareness on family policy reforms that can enable families to reconcile the challenges to balance work and home. Integral to this is the development of a universal system for early learning and child care and the introduction of flexible working arrangements and extended parental leave that encourage men to play a larger role in the domestic sphere.

As always, we would not be able to serve the communities we do without the ongoing dedication from our supporters. Without you, we could not provide valuable services and much needed supports for women and their families. Thank you for making 2014 another great year!

Sincerely,

Sherry Tryssenaar
Chair

Janet Austin
CEO

WHO WE ARE

Our mission is to touch lives and build better futures for women and their families through advocacy and integrated services that foster economic independence, wellness and equal opportunities.

YWCA Metro Vancouver is a volunteer- and membership-based organization that is part of the global YWCA network.

2014 / 2015 BOARD OF DIRECTORS			
CHAIR	Sherry Tryssenaar	BOARD MEMBERS	Nilusha Alibhai
VICE CHAIR	Debbie Nagle		Diana Chan
SECRETARY	Anne Boyle		Wanda Costuros
TREASURER	Gina Arsens		Karen Hoffmann

YWCA Metro Vancouver
535 Hornby Street
Vancouver, BC V6C 2E8

tel 604 895 5850
fax 604 684 9171
enquire@ywcavan.org
ywcavan.org

The Standards Program Trustmark is a mark of Imagine Canada used under licence by YWCA Metro Vancouver.

2014 FINANCIAL HIGHLIGHTS

YWCA Metro Vancouver’s ongoing impact in the community is made possible by our proven financial stability. The YWCA continues to grow its reserves while diversifying its funding to build a strong financial base.

Balance Sheet as of December 31, 2014

ASSETS

Cash and Cash Equivalents	5,695,667
Short-term Investments	1,177,573
Accounts Receivable	1,345,639
Inventory and Prepaids	284,922
Total Current Assets	8,503,801
Restricted Investments	2,067,469
Long-term Investments	3,514,242
Property and Equipment	23,645,820
Total Assets	37,731,332

LIABILITIES AND FUND BALANCES

Accounts Payable and Accrued Liabilities	1,942,012
Deferred Revenue	1,230,392
Current Portion of Capital Leases Payable	56,734
Current Portion of Mortgages Payable	165,448
Total Current Liabilities	3,394,586
Capital Leases Payable	120,053
Mortgages Payable	4,593,674
Total Liabilities	8,108,313

Fund Balances	29,623,019
Total Liabilities and Fund Balances	37,731,332

Fund Balances allocated to:

Unrestricted	597,311
BC Housing Replacement Reserve	724,128
Board Designated Endowment Fund	2,139,000
Board Designated Capital Repair and Replacement Reserve	1,839,636
Donor Designated Endowment Funds	1,343,341
Board Designated Legacy Fund	266,612
Board Designated Employment Program Fund	1,000,000
Capital Fund	21,712,991
Total Fund Balances	29,623,019

Statement of Revenue and Expenses for the year ended December 31, 2014

REVENUE

Government Contracted Programs	13,155,279
Fund Development	4,739,284
Hotel/Residence	3,615,057
Health + Fitness	2,702,608
Early Learning and Child Care Centres	1,577,666
Other Revenue	772,523
Investment Revenue	657,624
Events	644,369
Total	27,864,410

Fund Development revenue includes the following:

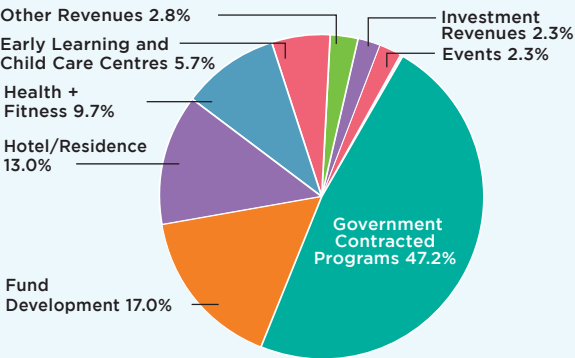
Donations	3,973,642
Government Grants	713,642
Gaming	52,000
Total	4,739,284

EXPENSES BY PROGRAM AREA*

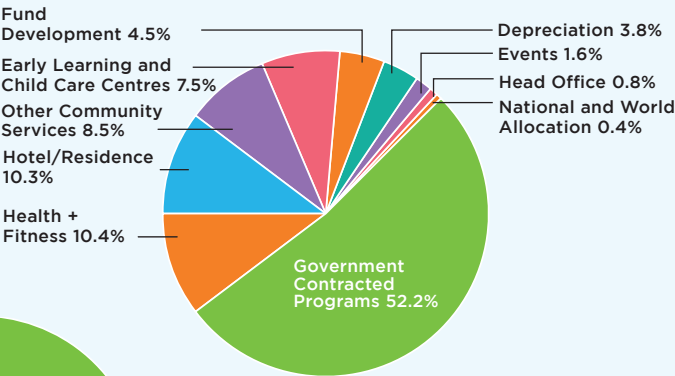
*Expenses by program area include allocations from head office of common administrative and support costs.

Government Contracted Programs	12,983,212
Health + Fitness	2,565,026
Hotel/Residence	2,570,099
Early Learning and Child Care Centres	1,876,553
Other Community Services	2,123,623
Fund Development	1,125,938
Depreciation	947,821
Events	396,149
Head Office	196,982
National and World Allocation	104,554
Total	24,889,957

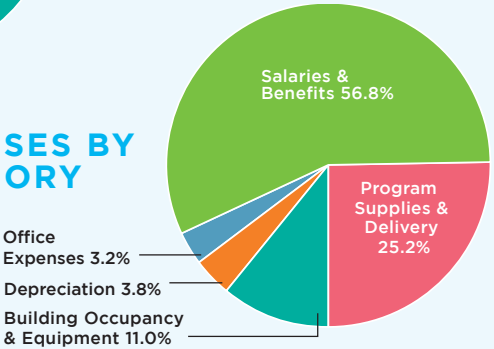
REVENUE



EXPENSES BY PROGRAM AREA



EXPENSES BY CATEGORY



A copy of the 2014 audited financial statements is available upon request.

CHANGING LIVES TOGETHER

2014 ANNUAL REPORT

YWCA METRO VANCOUVER

STAY AT THE YWCA HOTEL

20,212 guests enjoyed comfortable, affordable accommodation at the YWCA Hotel. Proceeds from their visits help to fund our programs.

For a number of years I have stayed at the YWCA. I love that the staff are always welcoming and helpful, and the fact that it is a community-minded organization.

- 2014 Hotel Guests



JOIN THE YWCA HEALTH + FITNESS CENTRE

18,227 visits helped women and men find their balance at the YWCA Health + Fitness Centre, the co-ed fitness facility and pool in downtown Vancouver. Membership fees help to fund YWCA programs and services.

It's just so uplifting knowing you're a part of doing something impactful and it's recognized.

- Dana, YWCA Health + Fitness Member



OUR COMMUNITY PARTNERS, DONORS AND SOCIAL ENTERPRISE SUPPORTERS IGNITE THE SPARK THAT HELP YWCA PARTICIPANTS BUILD THEIR FUTURES.

CELEBRATE WOMEN OF DISTINCTION

58 exceptional women and two innovative workplaces were honoured at the 31st annual YWCA Women of Distinction Awards, YWCA Metro Vancouver’s premier fundraising event.



VOLUNTEER

723 individuals and 36 corporate groups volunteered more than 21,000 hours during 2014.

Volunteering with the YWCA has provided me a way to give back to the community. It has given me something very special to look forward to on a regular basis!

- Fran, YWCA Crabtree Corner Volunteer Librarian



CHANGING LIVES SINCE 1897

THROUGH INTEGRATED SERVICES LEADING TO ECONOMIC INDEPENDENCE

41,321 times in 2014, clients and program participants accessed **50 programs and services** offered in **58 locations** throughout Metro Vancouver

Together, we have been able to help change lives for single moms like **Emi**



“What I had gone through was not easy, I experienced many ups and downs, but we were able to receive assistance thanks to the broad, wonderful connections at the YWCA. I cannot thank enough the people who have been here for me, for us.”

Emi was able to find support through YWCA Housing, Early Learning and Child Care, Employment and Single Mothers' Support Services

SUPPORT FOR FAMILIES IN NEED

716 Women and children benefited from the continuum of services at YWCA Crabtree Corner Community Resource Centre, which includes support groups that address parenting issues, violence prevention, fetal alcohol spectrum disorder, infant development and literacy.

550 Single moms and children took part in nine single mothers' support groups, including Baby & Me, a group for pregnant single moms-to-be and single moms with newborns.

386 Women accessed legal education, supports and workshops through the YWCA Legal Educator program.

141 Women and men were trained as facilitators in our Community Action on Elder Abuse program.

32,080 MEALS SERVED at Crabtree Corner in the Downtown Eastside

HEALTHY CHOICES FOR YOUTH

241 Girls and 190 Boys in Grade 7 participated in Welcome to My Life™, Boys 4 Real™ and That's Just Me after-school programs in Vancouver and Surrey.

104 Female high-school students and volunteer professional women built lasting friendships through the YWCA High School Mentorship.

18 Female participants took part in YWCA Aboriginal Sisters in Spirit Mentorship programs.

47 Female high-school students took part in the Green Choice Career Forum.

35 Youth leaving foster care participated in our new program Strive.

A HEALTHY START FOR CHILDREN

4 Licensed early learning and child care centres – Crabtree Corner, Emma's, Citygate and Leslie Diamond – provided quality care to children whose families have diverse backgrounds and needs. These families include single mothers living in the Downtown Eastside, low income teenage moms finishing high school and families balancing the challenges of working and parenthood.



355 CHILDREN received quality early learning and child care

SAFE, AFFORDABLE HOUSING

461 Low-income single women and children made their home in one of seven YWCA housing communities: Semlin Gardens, Fraser Gardens, Munroe House, Crabtree Corner Housing, Como Lake Gardens, Alder Gardens and Arbour House.

55% of room nights at the YWCA Hotel were subsidized for those needing emergency or temporary shelter.

The YWCA has been a catalyst for change ever since we opened our doors 117 years ago, to provide housing and services to the women coming to the city in search of education or employment.

From the beginning, we took an integrated approach to meeting community needs. Today, the YWCA continues to expand its spectrum of programs and services – and open doors for women, children, men and youth across Metro Vancouver.

635 GIRLS, BOYS AND TEENS participated in youth programs

In 2014, we were able to help jobseekers like **Diana** find clarity in her career path

“During the program, I developed a trusting relationship with my group and facilitators. The relationships I formed with the women at FOCUS continue to enrich my life.”

Through FOCUS@Work, Diana was able to build on her professional skills and find meaningful employment



NEW OPPORTUNITIES FOR EMPLOYMENT

4,310 Women and men accessed job search assistance through the YWCA's WorkBC Employment Services Centres in Vancouver and the North Shore.

129 Adult jobseekers participated in YWCA Job Options employment programs in Vancouver, the North Shore and Squamish.

83 Women participated in YWCA Connect to Success mentorship program.

81 Women participated in YWCA FOCUS@Work, a new program to help women find meaningful employment.

4,603 WOMEN, MEN AND YOUTH accessed employment services

Male leaders across Metro Vancouver spoke out on violence against women



2014 ANNUAL REPORT

YWCA METRO VANCOUVER

ywcavan.org



THANK YOU

WITH YOUR HELP, THE YWCA TOUCHED LIVES CLOSE TO 41,000 TIMES THROUGHOUT METRO VANCOUVER.

YWCA Leadership Circle

VISIONARY (\$50,000+/**3 YEARS**)

BC Ministry of Children and Family Development

BC Ministry of Jobs, Tourism and Skills Training

BC Ministry of Justice

BC Ministry of Social Development and Social Innovation

BMO Financial Group

Morris & Helen Belkin Foundation

Christine Buckley

Canada British Columbia Labour Market Development Agreement

Cause We Care Foundation

Chan Sisters Foundation

City of Coquitlam

City of Vancouver

Coast Capital Savings

Diamond Foundation

Envision Financial

Face the World Foundation

FreshPoint

Government of Canada - Canada Mortgage and Housing Corporation

Government of Canada - Homelessness Partnering Strategy

The Hieros Foundation

The ILLAHIE Foundation

Ismaili Council For BC

Mary C. Jordan Family

Lily and Robert Lee

MariaMarina Foundation

Lindsay Mearns

Marily Mearns

Dr. Katharine E. Mirhady

Jefferson Mooney and Suzanne Bolton

Patricia and Rudy North

A Place To Call Home

The Province of British Columbia - BC Housing

Provincial Health Services Authority

Public Health Agency of Canada

RBC Foundation

Real Estate Foundation of British Columbia

Robert and Sheila Ross

SEDI TD Financial Literacy Grant Fund

Sandman Hotels, Inns & Suites

Scotiabank

Shewan Foundation

Status of Women Canada

Eileen Stewart

Streethome Foundation

TD Bank Financial Group

United Way of the Lower Mainland

Valley Properties Ltd.

Vancity

Vancouver Coastal Health Authority

2 Anonymous Donors

CATALYST (\$15,000-\$49,999/3 YEARS**)**

Megan Abbott

BC Hydro

Cathy Beaumont and Shawn Laari

Boag Foundation

J. Armand Bombardier Foundation

CIBC/CIBC World Markets

CKNW Orphans' Fund

Canada Post Community Foundation

Canucks for Kids Fund

Choices Markets

Connor, Clark & Lunn Financial Group

Catherine Donnelly Foundation

Electronic Arts (Canada) Inc.

Eva's Initiatives

Fairbairn Foundation

John Fluevog Shoes

Dr. Joan Ford

Joan Fowler

G&F Financial Group

The Gardiner Family

HSBC Bank Canada

Steven Hill

The Hylcan Foundation

Kaatza Foundation

Edith Lando Charitable Foundation

Little Oak Academy Society

Lohn Foundation

London Drugs Foundation

The McCarthy Tétrault Foundation

Dr. Lori Irwin

The McLean Foundation

Mary Anne McWaters

Reay and Lynda Mackay

Dr. Verna Magee-Shepherd and Dr. John Shepherd

The Andrew Mahon Foundation

Merck Canada Inc.

Sylvia Ommannney

Al Roadburg Foundation

SAP Canada Fund at the Toronto Community Foundation

Shaw Communications Inc.

Patricia and Ken Shields

Joan Stanley

Virginia Stark

Suncor Energy

TELUS

Trico Charitable Foundation

Sherry Trysenaar

UPS Foundation, Inc.

University of British Columbia

Urban Impact

Kim van der Woerd and Ron Roesch

H. Anne Shepherd

Shoppers Drug Mart Life Foundation

Ratana Stephens

The Stewart Fund

TD Friends of the Environment Foundation

Beverley Tamboline

YWCA Inner Circle

PLATINUM CIRCLE (\$2,500-\$4,999)

ACE Bakery

Adura Strategy

Dr. Joy Alexander

Anako Foundation

Arrow Transportation Systems Inc.

Janet Austin

Avison Young Commercial Real Estate

Dr. Catherine Aczel Boivie

Anne Boyle and Rob Errington

Build-A-Bear Workshop Bear Hugs Foundation

Canadian Pacific Rail

Canadian Western Bank

Canadian Women's Foundation

Stephanie Carlson

Margaret Catley-Carlson

Sherry Cavallin

Con Brio Foundation

Anne Dobbie and Dennis Ewasiuk

Caroline Dunn

Robert and Gwen Ellis

Encana Corporation

Lucile Flavelle

Fluor Canada Ltd.

Judy Garner

Karen Gilmore

Oriana Green

The Hamber Foundation

The Home Depot Canada Foundation

Hotfusion Communications Inc.

Dr. Lori Irwin

Johannson Family Foundation

Diane and Warren Johnson

Kiwanis Club of Vancouver

Diana Lam

Family of Dr. Bik May Wai Lam

The Law Foundation of British Columbia

Leslie Lee and John Murphy

Loyal Protestant Association

Yvonne Mitchell

John and Dana Montalbano

Dawn Moss

Dianne Newell

NutritionLink Services Society

PNG Enterprise Foundation

Pacific Blue Cross

Beverlee Park and Jim Logan

Lindsay Perceval

Provincial Employees Community Services Fund

The Radcliffe Foundation

Real Estate Board of Greater Vancouver

Rotary Club of Surrey Guilford

H. Anne Shepherd

Shoppers Drug Mart Life Foundation

Ratana Stephens

The Stewart Fund

TD Friends of the Environment Foundation

Beverley Tamboline

Andrea Thomas-Hill

Ross Turnbull

Van Tel/Safeway Credit Union Legacy Fund

The Amir and Yasmin Virani Family Foundation

Lisa Vogt and Chris Hodgson

Warren and Twyla Wall

Weyerhaeuser Company Ltd.

Janet Austin

Avison Young Commercial Real Estate

Dr. Catherine Aczel Boivie

Anne Boyle and Rob Errington

Build-A-Bear Workshop Bear Hugs Foundation

Canadian Pacific Rail

Canadian Western Bank

Canadian Women's Foundation

Stephanie Carlson

Margaret Catley-Carlson

Sherry Cavallin

Con Brio Foundation

Anne Dobbie and Dennis Ewasiuk

Caroline Dunn

Robert and Gwen Ellis

Encana Corporation

Lucile Flavelle

Fluor Canada Ltd.

Judy Garner

Karen Gilmore

Oriana Green

The Hamber Foundation

The Home Depot Canada Foundation

Hotfusion Communications Inc.

Dr. Lori Irwin

Johannson Family Foundation

Diane and Warren Johnson

Kiwanis Club of Vancouver

Diana Lam

Family of Dr. Bik May Wai Lam

The Law Foundation of British Columbia

Leslie Lee and John Murphy

Loyal Protestant Association

Yvonne Mitchell

John and Dana Montalbano

Dawn Moss

Dianne Newell

NutritionLink Services Society

PNG Enterprise Foundation

Pacific Blue Cross

Beverlee Park and Jim Logan

Lindsay Perceval

Provincial Employees Community Services Fund

The Radcliffe Foundation

Real Estate Board of Greater Vancouver

Rotary Club of Surrey Guilford

H. Anne Shepherd

Shoppers Drug Mart Life Foundation

Ratana Stephens

The Stewart Fund

TD Friends of the Environment Foundation

Beverley Tamboline

Marilyn Brodie

May Brown

Jack Brownhill

Georgina Brunette

BuildDirect.Com Technologies Inc.

CIBC Wood Gundy

Ashley Chester

Dr. Jan Christilaw

Classic LifeCare

Sandy and Max Reimer

Pearl Roberts

Carolyn Rogers

Judy Rogers

Shannon Rogers

Ruthie Ross

Anne Rowles and Afton Cayford

Cheryl Carter

Shantal Cashman

Claire E. Cassady and George W. Cassady

Jill Schroder and Michael Reynolds

Liz Chaston

Wendy Chu and Frederick Lau

Shushma Datt

Stuart and Kimberly Davidson

Heather De Forest and Jeremy Gruman

Liz Chaston

Wendy Chu and Frederick Lau

Shushma Datt

Stuart and Kimberly Davidson

Heather De Forest and Jeremy Gruman

Liz Chaston

Wendy Chu and Frederick Lau

Shushma Datt

Stuart and Kimberly Davidson

Heather De Forest and Jeremy Gruman

Liz Chaston

Wendy Chu and Frederick Lau

Shushma Datt

Stuart and Kimberly Davidson

Heather De Forest and Jeremy Gruman

Liz Chaston

Wendy Chu and Frederick Lau

Shushma Datt

Stuart and Kimberly Davidson

Heather De Forest and Jeremy Gruman

Liz Chaston

Wendy Chu and Frederick Lau

Shushma Datt

Stuart and Kimberly Davidson

Heather De Forest and Jeremy Gruman

Liz Chaston

Wendy Chu and Frederick Lau

Shushma Datt

Stuart and Kimberly Davidson

Heather De Forest and Jeremy Gruman

Liz Chaston

Wendy Chu and Frederick Lau

Shushma Datt

Stuart and Kimberly Davidson

Heather De Forest and Jeremy Gruman

Liz Chaston

Wendy Chu and Frederick Lau

Shushma Datt

Stuart and Kimberly Davidson

Heather De Forest and Jeremy Gruman

Lindsay Paterson

Janet and John Pattinson

Patricia Bowles

Dale Bradley

Nancy Bradshaw and Robert Brown

Anita Braha

Daphne Bramham

Doreen and Jack Braverman

Christine Brophy

Terri-Lynn Brown

Cicely Bryce

Sherry Brydson

Gillian Buergin

Elaine Campbell

Kathy Carpenter

Cheryl Carter

Shantal Cashman

Claire E. Cassady and George W. Cassady

Jill Schroder and Michael Reynolds

Liz Chaston

Wendy Chu and Frederick Lau

Shushma Datt

Stuart and Kimberly Davidson

Heather De Forest and Jeremy Gruman

Liz Chaston

Wendy Chu and Frederick Lau

Shushma Datt

Stuart and Kimberly Davidson

Heather De Forest and Jeremy Gruman

Liz Chaston

Wendy Chu and Frederick Lau

Shushma Datt

Stuart and Kimberly Davidson

Heather De Forest and Jeremy Gruman

Liz Chaston