



2018 ANNUAL REPORT

Changing lives for 121 years.

VISION

To achieve women's equality.

MISSION

To touch lives and build better futures for women and their families through advocacy and integrated services that foster economic independence, wellness and equal opportunities.



YWCA Metro Vancouver is a volunteer- and membership-based organization that is part of the global YWCA network.

2018 / 2019 BOARD OF DIRECTORS

CHAIR

Geri Prior

VICE CHAIR

Lisa Coltart

SECRETARY

Meera Bawa

TREASURER

Woon Ai Tsang

BOARD

MEMBERS

Barbara Bahry

Paulina Cameron

Diana Chan

Elayna Diemert

Valerie Mann

Marilyn Mauritz

Genevieve Pinto

Morna Creedon Sileika

MESSAGE FROM THE CHAIR AND CEO

2018 was another milestone year for YWCA Metro Vancouver.

As leaders in the charitable sector, we continue to find innovative ways to meet the growing needs of our region. In anticipation of our 125th Anniversary in 2022, we launched The Next 125, a five-year campaign to raise \$10 million so we can continue to reach towards our vision of achieving women's equality.

In 2018, we received an inspiring \$4.25 million gift from an anonymous donor – the largest single donation in our organization's history. With this contribution, and the generous support of our donors and partners, we made a positive impact on the lives of thousands of women and children across Metro Vancouver.

Housing continued to be a key focus for the YWCA through 2018, as we know the role safe, affordable housing plays in a single mother's ability to move forward in life. In addition to our 10 housing communities currently in operation, we made progress on two new developments: YWCA Pacific Spirit Terrace, a 31-unit housing community being developed in partnership with the City of Vancouver and Vancouver Fire and Rescue Services, and YWCA St. Georges, 14 units of long-term housing in the City of North Vancouver being built in partnership with Chard Development Ltd.

The YWCA Health + Fitness Centre and YWCA Hotel / Residence continue to fund vital community programs while diversifying our revenue streams and supporting our long-term financial stability. As well as serving travellers, our Hotel provides subsidized room nights

for people in need of emergency shelter. Preparation for our Hotel expansion project was well underway by the end of 2018, and construction on a new tower, which will add an additional 65 rooms, began in January 2019. We expect to complete this project in Summer 2020.

We wrapped up our Culture Shift project – a three-year initiative to shift attitudes and practices that perpetuate the sexualization of women and girls and hypermasculinization of men and boys. Culture Shift combined research with broad-based community engagement, which included a cross-sector advisory council, community presentations, digital campaigns and local and national media coverage. We reached more than 350,000 people and empowered them to take action through an interactive tool to report sexualized media and advertising.

BC is now on the path to a quality and affordable universal early learning and child care system – the first major new social program in a generation. YWCA Emma's Early Learning and Child Care Centre was one of 53 licensed centres selected by the Province as a Prototype to test funding and operational models required to move BC to a universal system.

Since 2012, the YWCA has helped more than 10,000 job seekers achieve gainful employment through the operation of our WorkBC Employment Services Centres in Vancouver and on the North Shore. With our original contracts coming to an end, in 2018 the employment team underwent a new procurement process to continue this work over the next five years. We were successful and in April 2019 the YWCA expanded its services to the

Tri-Cities and now operates three additional WorkBC Centres across Vancouver as a subcontractor. This expansion will support new communities and strengthen continued relationships with employers across Metro Vancouver.

Looking ahead, 2019 will be another exciting year for the YWCA. We will embark on a new three-year strategic plan under the leadership of our Board of Directors and CEO Deb Bryant, who joined the organization in October 2018.

In reflecting on all we have achieved in 2018, we would like to extend a special thanks to our supporters and partners for joining us on this journey. Through your dedication, you have bolstered our commitment to bring about positive and lasting change in the communities we serve. As you read this year's annual report, we hope you are inspired to continue collaborating with us as we strive to create communities where everyone has the opportunity to reach their full potential.

Sincerely,



Geri Prior
Geri Prior
Board Chair



Deb Bryant
Deb Bryant
CEO



2018

YEAR IN REVIEW

In 2018, donors like **you**
helped change the lives of
46,106 clients
and program participants.

With **your support**,
we provided
59 programs and **services**
offered in **57 locations**
throughout Metro Vancouver.

STRONG START FOR CHILDREN

237 children received quality early learning and child care at YWCA centres.

125 children and **71 families** received holistic support through the Fetal Alcohol Syndrome Disorder (FASD) Key Worker program at YWCA Crabtree Corner.

SMART CHOICES FOR YOUTH

240 girls and **189 boys** participated in YWCA after-school youth education programs in Vancouver, Richmond and Surrey.

118 girls were matched with **118 professional women** through the YWCA High School Mentorship program.

ADVOCACY

We designed **7** digital advocacy campaigns on sexualization and toxic masculinity, gender equality and gender-based violence, and launched our Culture Shift media complaints tool. Together these initiatives reached **475,088** people.





A SUSTAINABLE YWCA

731 individuals and **33 corporate groups** volunteered more than **21,306 hours** in 2018.

1,509 pounds of produce was harvested from our Rooftop Garden – the fresh fruits and veggies were used to prepare nutritious meals for single moms and kids at YWCA Crabtree Corner.

12,616 visits to the YWCA Health + Fitness Centre helped support YWCA programs and services.

26,509 guests enjoyed comfortable, affordable stays at the YWCA Hotel/Residence. Proceeds from their visits help fund our programs.

We continued our work to embed a culture of **Reconciliation** across the YWCA, including developing training for staff on the history and legacies of colonialism and how to be an ally. We also introduced an **Elder in Residence** at YWCA Crabtree Corner.



SUPPORTING FAMILIES

562 low-income single mothers and children made their home in one of **10** YWCA housing communities.

23,464 plates of food were served at YWCA Crabtree Corner in the Downtown Eastside.

296 single mothers and **326 children** took part in **16** YWCA Single Mothers' Support Groups, including a new support group for single mothers of children on the Autism Spectrum.

58 clients accessed our Staff Lawyer's services and received one-to-one legal representation in matters such as family law and immigration.

"After years of living with an abusive partner, I found the courage to leave but didn't have the resources to support myself and my children. That's when the YWCA stepped in. They started with our basic needs like food, clothing and shelter, and expanded to other needs like emotional support for my children. The YWCA helped me follow my dreams and become independent. I will always be connected to the YWCA so I can give back to those who need it the most."

- Emilia, YWCA housing resident



OPPORTUNITIES AND EMPLOYMENT

2,195 people accessed job search assistance through the YWCA's WorkBC Employment Services Centres.

126 professional women took part in the YWCA FOCUS@Work program.

49 youth participated in the YWCA Skills Max program and **59 young women** participated in the YWCA Tourism Essentials program.

50 youth participated in YWCA Strive – a holistic employment program for youth who are transitioning out of foster care.

16 women participated in the YWCA Changing Gears program and received their Class 1 Truck Driving licence.

13 immigrant and refugee single mothers participated in the YWCA Pathways to Leadership program.

21 women participated in LEADS – a specialized employment program for survivors of violence and/or abuse.

2018 FINANCIAL HIGHLIGHTS

YWCA Metro Vancouver's ongoing impact in the community is made possible by our donors and proven financial stability. We continue to grow our reserves while diversifying our funding to maintain a strong financial base.

Balance Sheet

as at December 31, 2018

ASSETS

| | |
|-----------------------------|-------------------|
| Cash and Cash Equivalents | 8,289,179 |
| Short-term Investments | 5,418,083 |
| Accounts Receivable | 1,107,213 |
| Inventory and Prepaids | 339,274 |
| Total Current Assets | 15,153,749 |
| Restricted Investments | 2,844,573 |
| Long-term Investments | 4,082,434 |
| Property and Equipment | 34,895,439 |
| Total Assets | 56,976,195 |

LIABILITIES AND FUND BALANCES

| | |
|--|-------------------|
| Accounts Payable and Accrued Liabilities | 2,402,267 |
| Deferred Revenue | 4,577,111 |
| Current Portion of Mortgages Payable | 207,107 |
| Total Current Liabilities | 7,186,485 |
| Mortgages Payable | 4,733,732 |
| Total Liabilities | 11,920,217 |
| Fund Balances | 45,055,978 |
| Total Liabilities and Fund Balances | 56,976,195 |

Fund Balances allocated to:

| | |
|--|-------------------|
| Unrestricted | 769,282 |
| BC Housing Replacement Reserve | 1,053,296 |
| Board Designated Endowment Fund | 2,205,686 |
| Board Designated Capital Repair & Replacement Fund | 3,478,094 |
| Board Designated Legacy Fund | 568,801 |
| Board Designated Sustainability Fund | 164,634 |
| Board Designated Employment Program Fund | 2,680,174 |
| Capital Fund | 32,344,733 |
| Donor Designated Endowment Funds | 1,791,278 |
| Total Fund Balances | 45,055,978 |

Statement of Revenue and Expenses

for the year ended December 31, 2018

REVENUE (Operating and Capital)

| | |
|---------------------------------------|-------------------|
| Government Contracted Programs | 13,799,091 |
| Fund Development | 7,743,271 |
| Hotel/Residence | 4,872,145 |
| Health + Fitness | 2,978,095 |
| Early Learning and Child Care Centres | 1,943,529 |
| Investment and Other Revenues | 1,127,614 |
| Event | 683,391 |
| Total | 33,147,136 |

Fund Development revenue includes the following:

| | |
|-------------------|------------------|
| Donations | 6,896,611 |
| Government Grants | 543,813 |
| Gaming | 302,847 |
| Total | 7,743,271 |

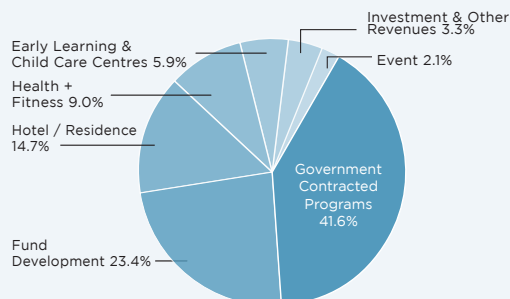
EXPENSES BY PROGRAM AREA*

*Expenses by program area include allocations from head office of common administrative and support costs.

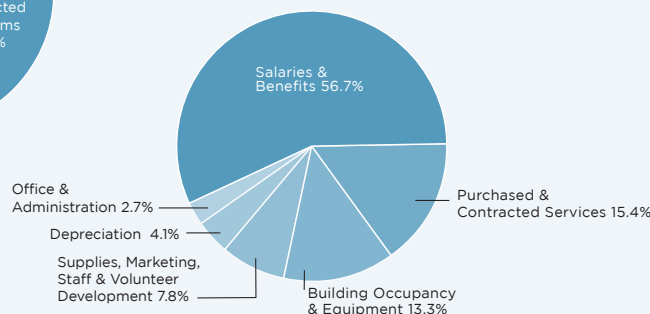
| | |
|---------------------------------------|-------------------|
| Government Contracted Programs | 14,290,695 |
| Hotel/Residence | 3,400,749 |
| Health + Fitness | 2,820,848 |
| Other Community Services | 2,867,744 |
| Early Learning and Child Care Centres | 2,281,095 |
| Fund Development | 1,738,969 |
| Depreciation | 1,202,856 |
| Events | 423,438 |
| Head Office | 203,296 |
| National and World Allocation | 136,097 |
| Total | 29,365,787 |

The excess of revenues over expenses is a result of bequests, a multi-year provincial contract, funds designated for capital projects and operational surpluses.

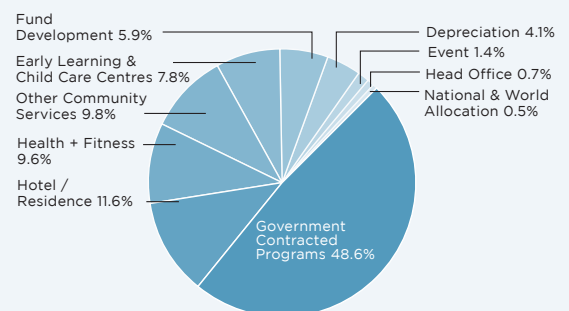
REVENUES



EXPENSES BY CATEGORY



EXPENSES BY PROGRAM AREA



CHANGE LIVES BY SUPPORTING YWCA METRO VANCOUVER

DONATE

Financial, bequest or in-kind gifts ensure that we can continue to help low-income single mothers and their families. ywcavan.org/donate

JOIN

Get fit and do good by joining the YWCA Health+Fitness Centre. Your membership supports our programs and services. ywcavan.org/fitness

STAY

Book a room at the YWCA Hotel/Residence. It's conveniently located and affordable, plus all proceeds help fund our programs. ywcavan.org/hotel

VOLUNTEER

Give back by mentoring, lending your skills and more. Our website features opportunities for individuals and groups. ywcavan.org/volunteer

SHARE

Get informed on advocacy issues by joining our mailing list, following us on social media and sharing our work with your network.



**NEXT
125**

Working Together for a Brighter Future

In 2022, YWCA Metro Vancouver will celebrate our 125th Anniversary. As Metro Vancouver grows and evolves, so does its needs. The YWCA is committed to growing with the community. Together we will raise \$10M through commitments of \$25,000 or more (options to host an event, make a group donation, leave a gift in your will and pledges are available). We are honoured to highlight the generosity of these dedicated individuals. *Campaign gifts received from August 2017 - May 2019. We sincerely regret any errors or omissions. To join the Next 125 Campaign, please contact Brenda Ulmer at bulmer@ywcavan.org or 604 895 5764.

The Next 125 Donors and Ambassadors

\$2,500,000+

Anonymous Donor

**\$1,000,000 -
\$2,499,000**

Summer Split Foundation,
held at Vancouver
Foundation

\$500,000 - \$999,999

Suzanne Bolton and
Jefferson Mooney

Pacific Spirit Foundation

Anonymous Donor

\$250,000 - \$499,999

Cindy and Ryan Beedie

Valley Properties Ltd.

Anonymous Donor

\$150,000 - \$249,999

Kitty Heller Memorial
Fund, held at Vancouver
Foundation

Mary C. Jordan Family

3 Anonymous Donors

\$100,000 - \$149,999

Armstrong Family
Foundation

Joan McEwen and Irwin
Nathanson

Anonymous Donor

\$50,000 - \$99,999

Diamond Foundation

Diane Forsythe-Abbott
Luncheon (2018)

Dilawri Group of Companies

John Fluevog Shoes

The Grayross Foundation

North Growth Foundation

Sylvia Ommanney

Shewan Foundation

The Somerset Foundation

The Stollery Charitable
Foundation

Windsor Plywood
Foundation, held at
Vancouver Foundation

Dr. Ann Worth Charitable
Foundation

\$25,000 - \$49,999

Paul Balfour and Cynthia
Miles

Lauren Gehlen and Jamie
Houssian

Peggy Ho Yuen

Jeri Krogseth

David & Dorothy Lam
Foundation

Dr. Katharine E. Mirhady

Kim van der Woerd and Ron
Roesch

Bruce and Lis Welch

Whitall Family Fund

THE NEXT 125 AMBASSADORS

Diane Forsythe-Abbott

Lauren Gehlen

Ann Mortifee

Kim van der Woerd

Lis Welch

Cynn timer Woodward

THANK YOU!

With your help, in 2018 the YWCA touched the lives of **46,106** clients and program participants throughout Metro Vancouver.

YWCA Leadership Circle

VISIONARY (\$50,000+/3 YEARS)

BC Association of Aboriginal Friendship Centres

BC Ministry of Advanced Education, Skills & Training

BC Ministry of Children and Family Development

BC Ministry of Jobs, Trade and Technology

BC Ministry of Justice

BC Ministry of Social Innovation and Poverty Reduction

Cindy and Ryan Beedie

Morris & Helen Belkin Foundation

Suzanne Bolton and Jefferson Mooney

J. Armand Bombardier Foundation

Cause We Care Foundation

Chan Sisters Foundation

City of Coquitlam

City of Vancouver

Robert L. Conconi Foundation

Diamond Foundation

Employment and Social Development Canada

Envision Financial

John Fluevog Shoes

FreshPoint

Government of Canada - Department for Women and Gender Equality

Governemnt of Canada - Homelessness Partnership Strategy

The Grayross Foundation

Kitty Heller Memorial Fund, held at Vancouver Foundation

The Hieros Foundation

The Houssian Foundation

The ILLAHIE Foundation

Indigenous Services Canada

Mary C. Jordan Family

Joan McEwen and Irwin Nathanson

MariaMarina Foundation

Dr. Katharine E. Mirhady

North Growth Foundation

Sylvia Ommannney

Pacific Spirit Foundation

Parq Vancouver

A Place to Call Home

The Province of British Columbia - BC Housing

Provincial Health Services Authority

Public Health Agency of Canada

RBC Foundation

Scotiabank

Shewan Foundation

The Somerset Foundation

Status of Women Canada

The Stollery Charitable Foundation

Streetchome Foundation

Summer Split Foundation, held at Vancouver Foundation

TD Bank Group

Sherry Trysenaar

United Way of the Lower Mainland

UPS Foundation

Valley Properties Ltd.

Vancity

Vancouver Coastal Health Authority

Western Economic Diversification Canada

Workforce Development Agreement

11 Anonymous Donors

**CATALYST
(\$15,000-\$49,999/
3 YEARS)**

Megan Abbott

Accenture Inc.

Act West Community Foundation

Ames Tile & Stone

Aritzia

Armstrong Family Foundation

Paul Balfour and Cynthia Miles

Shirley Barnett

BC Hydro

Roberta Lando Beiser

Boeing Canada-AeroInfo

Buddhist Compassion Relief Tzu-Chi Foundation of Canada

Rosemary Bueninck and Kylie Burrage

CIBC/CIBC World Markets

CKNW Kid's Fund

Canadian Western Bank

Canucks for Kids Fund

Coast Capital Savings Federal Credit Union

Connor, Clark & Lunn Financial Group

Mary Anne Davidson

Dilawri Group of Companies

Anne Dobbie and Dennis Ewasluk

Caroline Dunn

Electronic Arts (Canada) Inc.

Face the World Foundation

First Light Foundation

Fluor Canada Ltd.

Dr. Joan Ford

G&F Financial Group

The Gardiner Family

R. L. Gardiner

Lauren Gehlen and Jamie Houssian

Nancy and Tom Gougarty

Government of Canada - Department of Canadian Heritage

Government of Canada's Enabling Accessibility Fund Program

The Highbury Foundation

Steven Hill

The Hylcan Foundation

Industrial Alliance Insurance and Financial Services Inc.

Diane and Warren Johnson

Kaatza Foundation

Denise and Pentti Karkkainen

Jeri Krogseth

David & Dorothy Lam Foundation

Edith Lando Charitable Foundation

Fiona MacFarlane

Reay and Lynda Mackay Foundation

The McLean Foundation

Mary Anne McWaters

The Andrew Mahon Foundation

Methanex Corporation

Dawn Moss

Renate Mueller

Daniel and Pauline Nocente

Nordstrom

PNG Enterprise Foundation

Beverlee Park and Jim Logan

The Pender Fund

Provincial Employees Community Services Fund

Raven Foundation

Al Roadburg Foundation

Pat Robinson, Leigh Sauder and Family

Sage Foundation

Joseph Segal Family Foundation

Patricia and Ken Shields

Don & Joan Stanley Fund at the Edmonton Community Foundation

Ratana Stephens

Eileen Stewart

TD Friends of the Environment Foundation

Joan Fowler

TELUS

University of British Columbia

Urban Impact

Kim van der Woerd and Ron Roesch

Variety - The Children's Charity of BC

The Amir and Yasmin Virani Family Foundation

Bev Wallace

Mischa Weisz Foundation

Bruce and Lis Welch

Whittall Family Fund

Windsor Plywood Foundation held at Vancouver Foundation

The Wolrige Foundation

Dr. Ann Worth Charitable Foundation

3 Anonymous Donors

YWCA Inner Circle

PLATINUM CIRCLE (\$2,500-\$14,999)

100 Women Who Care of the North Shore

Absolute Software

AES Engineering Ltd

Dr. Joy Alexander

Allstar Mechanical Ltd.

Kathleen Alsop

Ames Family Foundation

Anako Foundation

Michael Audain

The Honourable Janet Austin

BC Nurses' Union

Boivie Family Fund

Anne Boyle and Rob Errington

Mike Brankston and Jill Donaldson

Bev Briscoe

Alix Brown

Joanne Brown

Canadian Mortgage and Housing Corporation

Sherry Cavallin

Diana and Bruce Chan

Classic LifeCare

Marian Coombs-Bucci and Fred Bucci

Dr. Dhar and Mrs. Harv Dhanda

Kenneth Downie

Fairbairn Foundation

Fasken Martineau DuMoulin LLP

Charles and Lucile Flavell Family Fund

Joan Fowler

Fresh Prep Foods Inc.

Sandra Garossino and Ravi Sidhoo

Judy Garner

Karen Gilmore

The Giustra Foundation

Oriana Green

Colin and Laura Hansen

Health Sciences Association of BC

Peggy Ho Yuen

The Home Depot Canada Foundation

Lisa and James Kershaw

Kiwanis Club of Vancouver

Ledcor Group of Companies

Legion Foundation

Tara Lett and Michael Watkins

Liv Cycling Vancouver

The Lobstick Foundation

Lohn Foundation

Dr. Verna Magee-Shepherd and Dr. John Shepherd

Valerie Mann

Manulife

Joan C. McCarter Foundation

McCarthy Tétrault Foundation

Nancy McKinstry

Ann Mortifee

Dianne Newell

OpenRoad Auto Group Ltd.

Lindsay Paterson

Peace Arch Hospital & Community Health Foundation

P!NK and Live Nation

Primeinvestment Management

Quan Family Fund, held at Vancouver Foundation

Raymond James Canada Foundation

Real Estate Board of Greater Vancouver

Pamela and Dave Richardson Family Fund

Shoppers Drug Mart Life Foundation

Nathalie Sinclair

SLC Holdings Inc.

The Stewart Fund

Beverley Tamboline

Teekay Shipping (Canada) Ltd.

Andrea Thomas Hill

Tides Canada Foundation

Tree Canada

Woon Ai and Victor Tsang

Van Kam Freightways

Ventana Construction Corporation

Warren and Twyla Wall

Warm Hearts Charitable Foundation

Weyerhaeuser Company Ltd.

Wiegand Memorial Foundation Inc.

York House School

4 Anonymous Donors

GOLD CIRCLE (\$1,700-\$2,499)

Janet Ames

Apple Inc.

Barb Bahry

Kamal Basra

BC Council for Families

Maryse Belanger and Paul Jones

Cleta Brown

The Late May Brown

Elizabeth J. (Betty) Burrell

City of Surrey

Lisa Coltart

Concord Pacific Developments Ltd.

Shelley Crawford

Tim and Nina de Souza Jensen

Elayna and Bruce Diemert

Efrosini Drimoussis

East Side Games Inc.

Maryke Gilmore

Rusty and Lindy Goepel

Gyro Club of Vancouver

Stephen Hall

The Hamber Foundation

Paul F. Joseph

Julia and Hwa Yul Kim

Diana Lam

Patricio Larrea

Sandra Lee

Barbara Lindsay

Linda Loo

Don Madsen

JoAn and Michel Maurer

Kirsty Maxwell and Philip Salt

McGrane-Pearson Endowment Fund

Pauline and Murray McInnes

Mindy McPherson

Diana L. Miles

Mary Lou Miles

Rita Morin and Brian Follett

Norah Morrow

Herma Neyndorff

Caroline North

Carla Poppen

Heather Price and Scott Blackwood

Ruthie Ross

Ravi and Nalini Saligram

Carole Anne Soong

Union of BC Performers

Western Inlet Cutting & Coring

Wheeler Family Foundation

Judi Whyte

Philippa Wilshaw

Leslie and Norm Wilson

Jane M. Wong

Janet Wood

SILVER CIRCLE (\$1,000-\$1,699)

A Thinking Ape Entertainment Ltd.

The Airey Family

Airstream Heating & Air

Yvonne Alexander

John and Margaret Anderson

Deborah Armour

Reagan Attle and Chris Phillips

Monique Auger

Robert Bailey Interiors

David Bain

Frank and Julie Barker

Sue and Robert Bauman

Frances Belzberg

Christina and Chris Bennett

Leslie and Peter Blake

Steven Borritt

Boston Pizza International Inc.

Nancy Bradshaw and Robert Brown

brand.LIVE Group

Cathy Brown

Rita Brown

Jack Brownhill

Georgina Brunette

David Bustos

CIBC Children's Foundation

CIBC Wood Gundy

Amy Chan

Wilkins Chan

Chrystal Chantel

Dr. Lloyd and Kay Chapman Charitable Foundation

Zhangxi Chen

Dr. Jan Christilaw

City in Focus

CitySpaces Consulting Ltd.

| | | | | | | |
|---|--|---------------------------------------|---|--|---------------------------------------|-------------------------------------|
| Leslie G. Cliff and Mark P. Tindle | Christian Morrison | Louise Watson | John and Gayla DeHart | Gayle and Brian Hunter | Lorne Palmer | Maureen and Randy Turner |
| Crofton House School for Girls | Nancy Morrison | Westminster Management Corporation | Cathy Derksen | Susan and Stephen Hutchison | Kostas Panagiotopoulos | Twist Fashions Inc. |
| Culinary Capers Catering | MPT Holdings Ltd. | Albertje Willems Smits | Hazel and Ron DeVall | Hazel Park | Ulker Holdings Inc. | |
| Danielson Group Wealth Management | Debbie and Michael Nagle | Tiffany and Jeffrey Wilson | Dr. Nishi Dhawan | Paul and Theresa Iverson | Dale and Joan Parker | Brenda Ulmer |
| Lorraine Dansereau | National Council of Jewish Women of Canada | Susan Witter | Isabelle Diamond | The Jennings Family | Sarah Pattison and Julia Hodgkinson | Justin Valente |
| Janice De Clerck | Shannon and Brad Newman-Bennett | Heidi Worthington | Leslie Diamond | Sharon Jeroski | Marg Van Wielingen | |
| Barbara Devlin | Norsat International Inc. | Stella Wu | Mary-Jo Dionne | Marni Johnson | Brian and Theresa Pearson | Vancouver Symphony Society |
| Nicola Donaldson | Norton Rose Fulbright Canada LLP | Sue Yamamoto | Direction(s) Consulting Inc. | Dr. Mary Kagan Inc | Genevieve Pinto | Svetlana Velikoredchanina |
| Cassie Doyle | Leah O'Neill | Susan and Jonathan Yurkovich | Daniel Dolan | Lynne Kent | Monique Poncelet | Cynthia and Bruce Verchere |
| DP World (Canada) Inc. | Pamela Oram | Ms. Vivian Zalkow and David Gomberoff | Louise Donovan | Dr. Shimi Kang and Mr. Jeevan KhunKhun | Wendi Pope | |
| Connie and Allen Eaves | Herb and Aster Osen | 5 Anonymous Donors | Fiona Douglas-Crampton | Marla Kiess and George Sesliija | Howard and Geri Prior | Cheryl L. Vickers Law Corporation |
| Ken Embree | Thomas O'Shaughnessy | BRONZE CIRCLE (\$500-\$999) | Anita Dowdle | Patrick King | Dr. Jerilynn Prior | Tayber and Jacqueline Voyer |
| Don Enns | Janet Pattinson | Barbara and Michael Aldritt | Heather Duffy and Al Tebworth | Wendy King | R. C. Purdy Chocolates Ltd. | Jennifer Wade |
| Pooya Esfandiar | Lindsay Perceval | Merle Alexander | Karen Dunlap | Natasha Krotez and Charlene Menezes | Vera Radyo | Bruce Walsh |
| Lisa Ethans | Servane Phillips | Christopher Anderson | Valerie Dunsterville | Zaylin Lalji | Alastair Rae | Andrew Warner |
| FMAV | Jean N. Pogge | Suzanne and Olin Anton | East Side Best Side Craft Show | Nancy Laughton | Monica Raj | Dianne Welch |
| Dallas and Sean Fahy | Kathleen Pomeroy | Marina Arnaud | Ashley Elchuk | The Law Foundation of British Columbia | Firoz and Saida Rasul | Kaayla Wildor and Robert Wilds |
| Melanie Ferrandi | David and Mary Beth Poole | BGH Community Fund | Valerie Embree | Jayne Le Vierge | Pamela Ratner and Joy Johnson | Shelley Williams |
| Jay Fiddler | Betti Port | Catherine Backman | Susan Evans | Janet Lee | Joyce Resin | Ainslie Rinfret |
| First Church of Christ Scientist West Vancouver | Tracy Proke and David Vogt | Carel and Dick Ballard | JoAnne and Terry Fahr | Melanie and Troy Lehman | Ainslie Rinfret | Donna J. Wilson |
| Marguerite Ford | Moura Quayle | Kate Ballem Chase and Stuart Chase | Peter and Gillian Fograscher | Glaister Leslie | Julie Robertson | Ariella Winberg |
| Helen Ghabel | Houtan Rafii | Joanne Barker | Carole Forsythe | Kathy Lilyholm | Sandy Robertson | Women's Financial Learning Centre |
| Anne Giardini | The Ratcliffe Family | Meera Bawa | Amanda and Barry Frith | Judith Lindsay | The Robinson Family | David Wong |
| Catherine Gibson and Geoffrey Pitman | Sandy and Max Reimer | Lori Becker | Brittney and Tom Gaglardi | Jason Loscher | Judi Robson | Cynthia Woodward |
| Oliver Gilbert | Heather P. Riedl | Pauline Belanger | Trish Gauntlett | Georgina and Andy MacDonald | Leia Rogers | Gisèle Yasmeen |
| James Gray | Pearl Roberts | Brenda Benham | Elizabeth Gautschi | K. Allison MacDonald | Cynthia and Michael Roney | Catherine and Bruce Young |
| Kay Gray | Luana Robertson | Muriel Ann Boltezar | Nadja Gehriger | Mary Macdonald | Elizabeth Roy | YWCA of Calgary |
| Patricia Hall | Judy Rogers | Anne Bonnycastle and Matthew Powell | Jill Gildersleve | Betty-Ann and Keith MacInnes | Gail Ruddy | 23 Anonymous Donors |
| Beth Hardy and Doug Stadelman | Anne Rowles and Afton Cayford | Susan and Steve Borthwick | Wanda Gildersleve | Martin MacLachlan | Jessie Rupp | YWCA Legacy Circle |
| Caroline Healy | Melanie Rupp | Daphne Bramham | Theoni Gill | Colleen MacMillan | Dana Samis | PLANNED GIFTS |
| Melinda Hockley | John Ryan Personal Real Estate Corporation | Doreen Braverman | Kenneth Gin | Gail McBride | Caroline Sanche | Judith Adelman |
| Margaret Hope | Laura and Richard Samaroo | Christine Brophy | Alexander Gist | Glenn McCurdy | SAP Canada Inc. | Sheila Allen |
| Amy Huva | Jenny Sandy | Cicely Bryce | Carol Givton | Julie McGill and Ryan Crago | Bobbi Sarai Tanguay | Kathleen Alsop |
| Elizabeth and Rudy Kerklaan | Caroline Scheumann | Richard Campbell | Global Village Vancouver | Caroline McMahon | Jazmin Sasky | The Honourable Janet Austin |
| Sheila and Douglas King | Laurie Schultz | Canadian Pediatric Society | Doris Gnandt | Naudia Maché | Jill Schroder and Michael Raynolds | Diane Baker |
| Chantelle Krish and Tilman Holschuh | Ron and Gurmeet Sengara | Canadian Women's Foundation | The Goodwin Family, in memory of Millicent G. Fleming | Brenda Madrazo | Elizabeth and George Scott | Sheila Begg |
| Jules Ku-Lea and Chester Field | Lorna Sent | Jacqueline Cannam | Barbara Grantham and Andrew Wilkinson | Janice Mallison | Thelma Sharp Cook | Alise Benner |
| Alice Laberge | Azad and Yasmin Shamji | CanWest Global Foundation | Graymont Ltd. | Tim and Shirley Manning | Andrea Shaw | Suzanne Bolton and Jefferson Mooney |
| Patricia Laidley | Joan Sheehan | Kathy Carpenter | Great Little Box Company | Marnie Marley | Madeleine Shaw | Anne Boyle |
| Kathy Leavens and Peter Noble | Helen Sheridan | Cheryl Carter | Elaine Grenon | Andrea Martiniuk | Rhonda Sherwood | Sally Bryant-Ballingall |
| Dianne and Bruce Ledingham | Carol Shpak | Diana Carter | Deryl and Stephanie Griffith | Martland & Saulnier | Leslie and Mark Shuparski | Elizabeth J. (Betty) Burrell |
| Sheryl Lee | Morna and Michael Sileika | The Century Plaza Hotel & Spa | Lori and Robert Gritten | Pauline and Glen Mason | SilverBirch Hotels & Resorts | Aletha Buschman |
| Christine Looock | Michelle and Laurence Sing | Liz Chaston | Braden Haggerty | Lori Mathison | Tom Simons | Celia Campos |
| Stephanie Louise | Timothy Smith | Ashley Chester | Lyndsey Hannigan | Victoria and John Mendes | Ms. Rajnish Singh | Barb Cassack and Jack Stevens |
| Tracey Lundell | Sophos Inc. Canada | Jason Clemens | Harbour West Consulting Inc. | Jenny Miles | Claudia Sjoberg | Pamela Chambers |
| Sally MacLean | Bridget and Virginia Spencer | Bruce Colwill | Melanie Hardy | Arthur Mills | Philippa Smith | Diana and Bruce Chan |
| Mrs. Joyce McCusker | STAT Search Analytics | Credit Canada Debt Solutions Inc. | Dana Lee Harris | Robert Minden | Robin Smith | Ann Coombs |
| Mary and Roderick McNeil | Anne Stewart | Duane Cromwell | Craig Hathaway | Yvonne Mitchell | Marian Snowball | Lynda Cooper |
| John Mah | Gwynfor Symmons | Lorraine Cunningham | Beth and Robert Helsley | Shaughn Mohammed | Sandy Sohal | Lynn Corrigan |
| Mark Marshall | Marcella Szel | Evelyn Hortobagyi | Irene Hensel | Kirsten Molstad | Monica Soprovich | Elaine Decker |
| Kathleen Martin | Kristy Todd Millar and Steven Commons | Brett Davidson | Tony Hepburn | Dr. Deborah Money | Kim Spencer-Nairn | Mary Bills Stimpson |
| Margaret Mason | Margaret Tran | Lotte and John Davis | Teresa Heung | Patty Montpellier | Joan Stewart | Barbara Stobie |
| Michel Maurer and JoAn Maurer | UFCW Local 1518 | Elaine Decker | Andrew Hiscox | Shannon Mooney | Marguerite Ford | Kathy and A. Stoessl |
| Marilyn Mauritz | Vancouver Pacific Lions Club | | Dayna Holland | Moore Family Fund | Elsie & Oscar Stone Legacy Foundation | Jim Evans |
| Diane Mausser | Barbara Vanderburgh Law Corporation | | Kimberley Horrocks | June Murdoch | Nancy Stuart-Stubbs | JoAnne and Terry Fahr |
| Nurjehan Nizar Mawani | Carla Villar | | Tracy Horton | Murphy Battista LLP | Diane Sullivan | Lucile and Charles Flavelle |
| Sandra Menzer | Christina Vlasceanu | | Ann Howe | Nancey Nanji | Ida and Thomas Tait | The Fota Family |
| Donna Molby | Lisa Vogt and Chris Hodgson | | Angela Huck | Shelley and Patrick O'Callaghan | Sigrid Tarampi | Dr. Joan Ford |
| | Carole Walkinshaw | | Lisa and Mike Hudson | Ocean Front Wealth Inc. | Teck Resources Limited | Marguerite Ford |
| | | | Tamara and Eric Hung | Omicron Canada Inc. | This Game Studio | Joan Fowler |
| | | | | | Peter Tsiandoulas | Katarina Gabrilo |

| | | | | | | |
|--|---|---|--|---|-----------------------------|---------------------------------|
| Joy Gaze | Geraldine Stringer | Ka Ki Ng | The Daryl Bramall (Crabtree Corner) Endowment Fund | Nicoletta Baumeister | William Clarke | Holly Foxcroft |
| Helen Ghabel | Arden Sutherland | Bonnie Wong | | Taylor Baumgarten | Ardelle Cliff | Joan Fraser |
| Karen Gilmore | Sherry Tryssenaar | Karen Wong | Leslie Diamond Child Care Endowment Fund | John Baxter | Mecca Clipsham | Louise Fry |
| Carol Givton | Woon Ai and Victor Tsang | May Yeung | Caroline J. Dunn Endowment Fund | Dr. Susan Baxter | Lori Cohen | Carina Fu |
| Nichola Malim Hall | Lynne Tyler | In honour of Nicole Lee | Ralph and Grace Fisher Endowment for Crabtree Corner | Ian Beardmore | Marcy Cohen | Karen Gagliardi |
| Maureen Hannah | Brenda Ulmer | Jennifer Hong | | Rose Beatty | Clara Coles | Melanie Gagnon |
| Steven Hill | Kim van der Woerd and Ron Roesch | Emily Ko | Jean Giles Memorial Endowment for Women and Children Living in Poverty | Beauchamp Family | Stephanie Connolly | Eleni Galanis |
| Lois Hollstedt | Marg Van Wielingen | In honour of Pamela McCullough | The Charles and Adeliene Hill Endowment Fund | Nadine Beaulieu | Sharon Copeman | Sylvie Galindo |
| Tamara and Eric Hung | Lisa Vogt | Alastair and Annette Miller | Dan Hill Memorial Endowment for Women and Children Living in Poverty | Sheila Begg | Raymond Corrado | Agnes Garaba |
| Jane Hutton | Jennifer Wade | In honour of the RBC volunteer team lead by Kevin Mao | Mary C. Jordan Endowment for Economic Independence for Women Fund | Katie Benjamin and Brian Hikisch | Regan Courtney | Maura Gatensby |
| Brenda Jebson | Mary Wallace Poole | | Anonymous | Darren and Monika Bennett | Andrew Creighton | Rian Gauvreau and Angela Stogre |
| Mary C. Jordan Family | Bruce and Lis Welch | Steven Borritt | | Richard Bennett | Greg Cunningham | Kim Gaynor |
| Sheila and Douglas King | Margaret Williams | Anonymous | | Susan Bennett | Claire and Will Cupples | Kate Gerson |
| Shawn Laari and Cathy Beaumont | Susan Witter | In honour of Alastair Miller | | Vivian Bevis | Jennifer Cutbill | Avril Gibson |
| Kathy Leavens and Peter Noble | Janet Wood | Pamela and Cecil McCullough | | Raman Bhangoo | Jito da Silva | Julia Gibson |
| Joanne Lee and Des Chew | Paul and Sarah Wu | In honour of Donna Moore | Named Funds | Cheryl Bishop | Catherine Dahl | Jaspreet Gill |
| Hugh and Judy Lindsay | 15 Anonymous Donors | Gail and Frances Rudin | Janet Austin Advocacy and Public Education Fund | Randy Bock | Barbara Dale | Cynthia Girling |
| Bev Lindsey | ESTATES | Maxine Schulmeister | Boivie Family Fund | Rebecca and John Bollwitt | Emilia Daversa | Arlene Gladstone |
| Margaret J. Livingstone | The Estate of Eileen Cambon | In honour of Odete Pinho | Kitty Heller Independence Fund | Christine Boulton | Jennifer Davies | Bob and Dana Golden |
| Mary Macdonald | The Mark and Phae Collins Fund | Christina Weston | Kay Nineties Fund for YWCA Single Mothers Support Services | Gail Bouskill | Eric Davis | Tanis Goldman |
| Mrs. Joyce McCusker | The Estate of Lillian Gilder | In honour of Carol Robinson | Marnie Marley FASD Fund | Susan Boyd | Patricia J. Dawson | Carol Gordon |
| Mary and Dan McDougall | The Estate of Agnes MacKay Groundwater-Publicover | Julia Hibbard | YWCA Friendship Circle | Kate Marion Boyle | Lynne De Cew | Gordon-Neden Family |
| Christy McLeod | The Estate of Carla Poppen | Barbara Mowat | | Susana Bradbury | Stephanie Denner | Michelle Grant |
| Laurie McLeod | The Alma Van Dusen Fund | Katharine White | | Lori Braha | Claire Desmarais | Lee-Ann Graves |
| Caroline McMahon | Tributes | In honour of Ron Roesch | | Natalie Branco | Gabriel Dhahan | Natasha Gray |
| Valerie Mann | In honour of Kathleen Alsop | Anonymous | Frank and Phyllis Abbott | Jennifer Breakspear and Laurie Anderson | Lawrence Diamond | Susan Green |
| JoAn and Michel Maurer | First Church of Christ Scientist West Vancouver | In honour of Gabrielle Tadros, Safwat Tadros, Sophie Tadros and Stephanie Tadros | Meg Albanese | Alison Brookfield | Margaret Dickson | Genesa Greening |
| Wanda and Tony Morris | In honour of Anita I. Armstrong | Joan Harriott | Michael Aldritt | Diane Brown | Laurel Douglas | Ms. Grisdale-Kearnes |
| Sheila Moynihan | Anita Dowdle | In honour of Kim van der Woerd | Neil Alexander | Terri-Lynn Brown | Robb and Linda Douglas | Dominique Gross |
| Renate Mueller | Katarina Gabrilo | Anonymous | Tiffany Alexander | Mary and Vaughan Bruneau | Warren Downs | Barbara Groundwater |
| Jill Munro-Metheral and Shawn Metheral | Tanya Itter | In honour of Alison and Tom | Nilusha Alibhai | Naomi Brunemeyer | Patricia Drugge | Lorraine Grouet |
| June Murdoch | Arden Sutherland | Donna J. Wilson | Debra Ames | Marie-Luise Brunnhofer | Ashley and Michael Drummond | Ivana Gubiani |
| Carolyn Neilson and Christopher Frigon | In honour of Janet Austin | In memory of Barbara Belleperche | Seema Amwan | Megan Buckley | Lorraine Duclos | Julie Guenkel |
| Herma Neyndorff | United Way of the Lower Mainland | Karley Belleperche | Lynell Anderson | Kristen Bull | Daryl Dunn | Joanne Gum |
| Jan Noppe | In honour of Lorena L. Boland | In memory of Kathy Johns | Matthew Anderson | Laurel and Noel Burke | Suzanne Dunn | Penny Gurstein |
| Julia Nyberg and Alexander Moss | St. George's School | Sharon and Kenneth Johns | Spencer Andres | Susan Burton | Margo Dunnet | Pauline Hadley-Beauregard |
| Pamela Oram | In honour of Mary Clare and Jim Bovard | Donna J. Wilson | Barbara and Patrick Andrew | Sion Cahoon | Irene Dyer | Ken Hall |
| Tracey Osborne | Margaret Albanese | In memory of Dorothy MacKinnon and Avanelle Tuttle | Lonny and Heather Andrews | Betty Calam | Jill Earchy | Kirsten Hall |
| Helen Oster | In honour of Cheney Cloke-Hui | June Murdoch | Frank Anfield | Dan Cameron | Heather Edgar | Carla Hallett |
| Janet Pattinson | Lindsay Macdonald | In memory of James Mennie | Yuh-Chie Angel Kao | Irene Campbell | Brenda Edwards | Emily Hamer |
| Lindsay Perceval | In honour of JoAnne and Terry Fahr | Barbara Mennie | Nez Aquino | Neal Campbell | Nicole Eich | Kathy and Stanley Hamilton |
| Genevieve Pinto | Anonymous | In memory of Othello Nocente | Rothsoukhon Aranyaphong | Diana Carlisle | Orna Elizur | Helen Hansen |
| Kathleen Pomeroy | In honour of Susan Hayes | Daniel and Pauline Nocente | Jessica Arbour | Melanie Carson | Anne and Mark Ellenberger | Mary Harder |
| Marilyn and Jack Pomfret | In honour of Jenny Ho | In memory of Paul Trentino | Margaret Archibald and Peter Moskos | Michael R. Carter | Kathryn and Ron Erdman | Imbi Harding |
| Betti Port | Alice Ao | Carel and Dick Ballard | Valerie Arlette | Julie Catling | Maret Erickson | Joan Harriott |
| Quan Family Fund, held at Vancouver Foundation | Jackie Chan | In memory of Meta Welke | Kathleen Armstrong | Renée Chadwick | Sheila Evani | Rosemarie Harrison |
| Pearl Roberts | Ms. Vivian and Chan | Anita Welke | Frances and Dave Ashdown | Mei Kay Chan | Catherine Evans | Alison Hart |
| Judy Rogers | Ludu Cheung | In memory of Eleanor Wirum | Noel Asmar | Vivian Chan | Maureen Fairhurst | Anne Hatlelid |
| Lenore Rosen | Jenny Ho | Carole Anne Soong | Heather Aspden | Will Chan | Amanda Farrell | James Haugen |
| Gail Ruddy | Jacqueline Hung | Rina Maria Bidin Fund | Paul Aspinall | Benson Chen | Gayle Farrell | Sue Hawk |
| Jessie Rupp | Amanda Lam | May Brown Endowment Fund | Herb Auerbach | Anita Cheng | Urs Fellmann | Stewart Hayashi |
| Michelle Rupp | Klara Lee | | Mei Bai | Elise Chenier | Lauri Ann Fenlon | Ping He |
| Jill Schroder and Michael Raynolds | Cherry Li | | Susan Bailey | Robert Chiarello | Lawrie Ferguson | Julia Hedley |
| Christine E. Smith | Cathy Ma | | Simran Bains | Shelley Chin | Marisa Ferrara | Connie and Gary Hendren |
| Philippa Smith | | | Nini Baird | Jeff Chong | Lynn Field | Kevin Hendricks |
| Alaina Soucie and Ryan Degrazio | | | Alan Ballard | Suzanne Chong | Diane Finegood | Gillian Hesser |
| Sandra Stevenson | | | Tiffany Barker | Ruby Chow | Patricia Fingarson | Cam Hickey |
| Anne Stewart | | | Shiela Barkey | Jim Chu | Pauline Finn | Lesley Hilda Petts |
| Eileen Stewart | | | Marvin Bartell | Joanne Chua | Sylvia Fitzgerald | Bruce Hill |
| | | | Brenda Barton | Gyda Chud | Elizabeth Fleming | Matt Hill |
| | | | Rolf Baumbusch | Denise Clark | Janet Flowers | N. Himer |
| | | | | Sarah Clark | Vivian Fong | Jenny Ho |
| | | | | | Karen and Edwin Foss | Lois Hollstedt |

| | | | | | | |
|--|------------------------------------|-------------------------------------|-----------------------------------|---|---|---|
| Bev Holmes | Sylvia Lanz | Ashley Miller | Bhardwaj Ranbir and Asha | Joanne Stahlstrom | Daisy Yang | Patricia Shields |
| William Hong | D'Arcy Larmour | Cynthia Minden | RecycleSmart | Jyoti Stephens | Siyu Ye | St. Giles |
| Yasamin Houshmand | Paul Larocque | Kyle and Mary Mitchell | Samuel Reed | Sandra Stevenson | Grant Yee | Phuong Tan |
| Ivy Hubbard | Debra Lawson | Marnie Mitchell | Elise and Richard Rees | Jessica Stewart | Florence Yen | Thanh T. Tan |
| Sandra Hunt Chomyn | Jennifer Leach | Pamela Mitchell | William Rees | Roberta Stonechild | Rhona Young | TD Canada Trust |
| Marietta Hurst | Shelley Lederman | Andrew and Susan Molloy | Cindy Reeves | Mary Stott | Kari Yuers | The Royals' Team U12 |
| Stephen Hutchison | Amy Lee | Peter and Patty Molnar | Elaine Reynolds and Ronald Zisman | Tina Strehlke | McKenzie and Bailey Yuill | Tiny Kingdom Music |
| Jane Hutton | Cynthia and Steven Lee | Liam Montgomery | Dr. Stephanie Rhone Inc. | Sunblest Commodities Inc. | Yun Zhao | Iva G. Tong |
| Tien Huynh | Grace Lee | Alastair Moore and Dominica Babicki | Noel Richardson | Margaret Sutcliffe | 3rd-Party Events and In Kind Donors | TransLink |
| Rodney Hynes | Nicole Lee | Jennie Moore | Caitlin Roberts | Kirsten Sutton | | Twist Fashions Inc. |
| Patrice Impey | Cynthia and Steven Lee | Cathie Moroney | Linda Roberts | Shauna Sylvester and Ross Gentleman | | United Girls of the World |
| Jana Ingaldson Bromm and Michael Brown | Nicole Legault | Cindy Morrison | Catherine and Todd Robertson | Lynn Szto | | United Way of the Lower Mainland |
| Karey Irwin | Richard Leisen | Kyle Morton | Wayne Robertson | Elizabeth Wreford Tait | Accenture | Vancouver Film Studios |
| Corinne Isherwood | Carol Leong | Chris Mota | Maria Roeck | Uyen Tan | Aritzia | Vancouver Firefighter Charities |
| Iglika Ivanova | Patrick Lermitte | Marguerite Mousseau | Amanda Rogers | Thanh Tan | Jessica Arbour | Andrea Virani |
| Rick Jackson | Gina Leslie | Barbara Mowat | Karen Roller | Debra Tarigan and Stephen Gowan | Barnes And Noble | West Coast Seeds |
| Susan Jackson | Florence Leung | Danette Mui | Don Rose | Preeti Thindal | Carel Ballard | 2018 Women of Distinction Awards |
| Roumina Jamal | Paul Leung | Leah Mulleda | Pat Rose | Rick Thomas | Buddhist Compassion Relief Tzu-Chi Foundation of Canada | |
| Laura Jamieson | Wilma Leung | Ingrid Munro | Joseph Rosen | David Thompson | BuildDirect | |
| Kara Jansen | Chandra Levac | Evi Mustel | Lenore Rosen | Hilary Thompson | Canadian Health Food Association | |
| Marnie Jepsen | Jill Leversage | Rekha Nair | Patricia Ross | Megan Tory | Cause We Care Foundation | Presenting Sponsor |
| Sharon Johns | Challen Li | Andrea Nardi | Victoria Ross and James Boothroyd | Peter Trenouth | Chernoff Family Foundation | Scotiabank |
| Cal and Sandra Johnson | Miu Fong (Jannique) Lim | Michael Negraeff | Simone Rousseau | Ingrid Tsui | Deborah Chen | Legacy Sponsors |
| Denise Johnson | Jen Lindenberg | Andrea Nelson | Stuart Rowles | Alex and Jennifer Tunner | Crofton House School for Girls | BC Housing |
| Sandra Johnson | Tom Lindsay | Jolene Neufeld | Tyler Roy | Rosemary van Stavel | East Side Games | Clio |
| Gladys and Allan Johnston | Margaret J. Livingstone | William New | Frances Rudin | Praveen and Anuja Varshney | Gwen and Robert Ellis | Goldcorp |
| Jennifer Johnston and Scott Warren | Crystal Lo | Lee and Teri Nicholas | Lisa Rupert | Colleen Vaughan | Fairmont Hotel Vancouver | iA Financial Group |
| Gina Jones | Tania Lo | Jean-Guy Niquet | Blair Russel | Greg Veitch | Fedex | Nature's Path |
| Kyler Jukes | Barbara Lockyer | Julia Nyberg and Alexander Moss | Simon Russell | Michelle Villarosa | Eileen Fisher Canada Ltd. | Pacific Blue Cross |
| Heather Kaart | Tracy Logan | Sheila O'Brien | Zulie Sachedina | Suzara Viray | From the Bottom Up Foundation | SAP |
| Michael Kaffka | Sophie Lui | Barbara Ogden | Steve Sakamoto | Louis Wadsworth | Bianca Fusco Zanatta | TD Bank Group |
| Shirley Kaplan | Katriona MacDonald | David Ogren | Martha Sales | Julie Walchli | Farzana Harji | UBC Sauder School of Business |
| Karim Kassam | Lindsay Macdonald | Ryan Oh | Pat Sam | Elizabeth Walker | Horizon Church | Tribute Sponsor |
| David Keenan | Annabel MacKenzie | Gary Olszewski | Dawn Sandberg | Nancy Walker | David Keenan | CN |
| Lara Kehler | Sarah MacKinnon | Alison Orr | Karen Savage | Joan Wallace | Kidsbooks | Patron Sponsors |
| Jack Kelley | Joanne MacLean | Jean Orr | Tara Saysombath | Susan Wannamaker | Imagine That Events | Hemlock |
| Janice and Hank Ketcham | Joan MacNab | Tom Ostby | Anton Scamvougeras | Janet Waterman | Lei Jacob Krarup | Lawson Lundell LLP |
| Irfan Khanbhai | Marion McAdam | Rebecca Ouwehand | Caroline Schein | Matt and Grace Watson | Diana Lam | Leith Wheeler Investment Counsel Ltd. |
| Jas Khatkar | Rita McAllen | Alison Owens | Barb Schimnowsky | Elizabeth Watt | Grace Lee | Showkraft |
| Janet Kidd | Pamela and Cecil McCullough | Freda Pagani | Heather Schoemaker | Nicola Webb | Tara Lett | The Tomorrow Agency |
| Allison Killam | Dan McDougall | Ashley Palmer | Glenn Schoenroth | Karyn Weir | Liv Cycling Vancouver | Vancity |
| Susanne Kingshott | Dan McDougall | Victoria Parr | Maxine Schulmeister | Anita Welke | London Drugs Ltd. | Media Sponsors |
| Patricia Kirkham | Mary and Paul McGivern | Tara Parry | Jennifer Schweers | Judy Wellington and Don Wadella | Lower Mainland Christmas Bureau | |
| Candice Klarich | Sharon McIntee Birrell | Linda Parsons | Danielle Segal | Vanessa Wellington-Clark and John Clark | Leah Markovitch | BIV |
| Barbara Klebanoff | Patricia McKendrick | JT Parwar | Rylan Sekiguchi | Theresa and Garry Weltzin | Mercedes Benz | CKNW & Global TV |
| Mary Ann Kmetic | Michael McKnight | Lola and Norman Pawer | Shom Sen | Laura West | Gracelle Mesina | Social Media Sponsor |
| Garrett Knights | Mary Ellen & Katie Maasik | George and Penny Pedersen | Hamed Shahbazi | Stephanie Weterings | Methanex Corporation | |
| Clifford Kondratiuk | Lianna Mah and Jonathon Ng | Michelle Pham | Lisa Shen | Janet White | Cynthia Miles | Miss604 |
| Samuel Koop | G.B. John Mancini | Janet Phelps | Anne Shepherd | Katharine White | Ministry of Environment and Climate Change | Wine Sponsor |
| Peggy Rae Koopman-Birkemoe | Melanie Marchand | Thomas Philpott | Shelley Sheppard | Stephen Whitmore | Murchie's Tea & Coffee Ltd. | |
| Rene Kormos | Jessie Marches | Sarah Pike | Karen Shuster | Joanne Wild | Sarah Murray | Perseus Winery |
| Nancy Kotani | Christine Marks | Angela Pilarinos | Krista Simon | Terry A. Wilkinson | Michelle Pham | |
| Hitesh Kothary | Sharon Matthews | Bruce and Gwen Piper | Amanda Skoll | Jocelyn and John Willis | Michelle Porter | |
| Robert Kraft | Alden and James May | Dr. Erika Plettner | Chelsea Smith | Eric Wilson | R.C. Purdy Chocolates Ltd. | |
| Robert Krell | Lisa May | Marion Poliakoff | Karin and Stan Smith | Amy Wong | RBC Financial Group | |
| Kacey Krenn | Elizabeth J. Meekison | Rosalind Poon | Michelle Smith | Lorraine Wong | Real Estate Board of Greater Vancouver | |
| Kristy LaGourgue | Marie Melanson | Edoye Porbeni | Cynthia Soboren | Caroline Woodcock | Shelagh Rooney | |
| Jan Laishley | Erin O'Melinn | Pam Prior | Spa Mobile | Leah Woodhouse | Benée Rubin Design Corporation | |
| Randal Lake | Barbara Mennie | Robert Quart | Darlene Spevakow | Robyn Woodward | Sage Foundation | |
| Betty Lam | Hilary Meredith and Michael Heeney | Daniel Quon | Alaina Soucie and Ryan Degrazio | Mari Norfolk | Rylan Sekiguchi | |
| Friederike Lambeck McConchie | Catherine Mezei | Leila Rahemtulla | Adina Spivak | Jenny Xenos | Laura-Leah Shaw | |
| Maggie Langrick | Alastair and Annette Miller | Marion Ralston | Margaret Ramsay | | | |



We have done our best to include everyone who made a contribution of \$100 or more between January 1 and December 31, 2018. We apologize for any errors or omissions.

Please contact us at 604 895 5850 if we have made an error in your acknowledgement.



YWCA Metro Vancouver
535 Hornby Street
Vancouver, BC V6C 2E8

tel 604 895 5850
fax 604 684 9171
donations@ywcavan.org
ywcavan.org



The Standards Program Trustmark is a mark of Imagine Canada used under licence by YWCA Metro Vancouver.