



**2020  
ANNUAL  
REPORT**

**A YEAR OF RESILIENCE**



## YWCA VISION

To achieve women's\* equality.

\*This includes the full realization of equality for women, girls, Two-Spirit and gender diverse people.

## YWCA MISSION

To touch lives and build better futures for women and their families through advocacy and integrated services that foster economic independence, wellness and equal opportunities.

## 2020 / 2021 BOARD OF DIRECTORS

**CHAIR**  
**VICE CHAIR**  
**SECRETARY**  
**TREASURER**

Lisa Coltart  
Valerie Mann  
Marilyn Mauritz  
Morna C. Sileika

**BOARD**  
**MEMBERS**

Barbara Bahry  
Paulina Cameron  
Elayna Diemert  
Lawrie Ferguson

Cathy Imrie  
Dianne Sparrow  
Diane Sullivan

# MESSAGE FROM THE BOARD CHAIR AND CEO

By now, we have well accepted that 2020 was a year like no other. The COVID-19 pandemic defined our lives, locally and globally. It impacted everything, including YWCA Metro Vancouver's service delivery, fundraising and advocacy focus.

We began the year in a strong financial position. Our prudent planning had landed us on stable, even fertile, ground. Thankfully, that gave us the confidence and capacity to weather the last 14 months.

As we quickly adjusted our programs to keep the community and our staff safe, we were also affected by calls for racial justice that reverberated around the globe. Like many organizations, we took this opportunity to look inward. We learned a lot about the work we do, and what we need to do. Through it all, we did not waver on upholding our key strategies: advocating for women's equality, seeking opportunities to build more housing, working as allies alongside Indigenous women and girls in their pursuit of substantive equality and evolving our understanding of gender and exploring its significance for the YWCA.

In terms of leadership, we are fortunate to have strong and committed people at all levels of the organization. From our board of directors, who brought unreserved effort to their role, to our staff, who demonstrated resilience and adaptability every day, leadership at the YWCA was put to the test. Staying focused on our mission allowed us to deliver our services without interruption, reaching many who were in need.

Thanks to this resiliency, we had remarkable successes in 2020. We completed the expansion of the YWCA Hotel, positioning it as an important source of revenue for the YWCA. May Brown Place, a new YWCA housing community in North Vancouver, neared completion to welcome 14 families led by single mothers. In spite of the disruptions this year, we have been able to rely on robust government and community support and the success of our performance-based programs, to end in a position of relative strength. We are proud of this and could not have done it

without you - our community of friends and supporters.

Looking ahead, we have seen the troubling impact the pandemic has had on women and people who are marginalized. It has exposed gaps in our society that nonprofits like the YWCA are relied upon to address. There are fewer resources but more demand. Housing, child care and a gender-based model for economic recovery is even more important today, as we collectively begin to rebuild.

It has also become clear that in order to deliver our services with integrity, we must walk the talk on equity and inclusion. We have set up and support three staff committees - gender inclusion, truth and reconciliation and racial equity - and we continue a program of board education to ensure that equity and inclusion are built in to our strategies. We are committed to examining our practices and taking meaningful action.

It has been a tough year but we are proud and uplifted every day by the organization's strength and dedication. We are more committed than ever to our vision of women's equality. We are actively working with local and national partners, and governments across all levels, to raise our voice. We are engaging our community and decision makers to imagine and design a just recovery and to ensure women don't lose the ground they have gained. We are celebrating our wins and next year we will mark 125 years of creating change to make our world better.

And for this, we have much to be hopeful about.



A handwritten signature in black ink, appearing to read 'Lisa Coltart'.

**Lisa Coltart,**  
Board Chair



A handwritten signature in black ink, appearing to read 'Deb Bryant'.

**Deb Bryant,**  
CEO



# 2020 YEAR IN REVIEW

The COVID-19 pandemic defined 2020, and impacted YWCA's service delivery and social enterprises, as well as staff and program participants. It also showed how connected and resilient we collectively are.

In 2020, donors like you helped support **72 programs** in **66 locations** in Metro Vancouver.

## IMPACTS OF THE PANDEMIC

We rely on our social enterprises as a stable source of revenue. They were drastically disrupted in 2020.

The YWCA Hotel revenue declined by 83.82% and the YWCA Health + Fitness Centre by 48.26%. The YWCA Thrift Store closed its doors for good.

However, donations and grants increased by 27.8%, and the Government Wage Subsidy was crucial to keeping our services and programs operating. We finished the year in a relatively strong financial position.

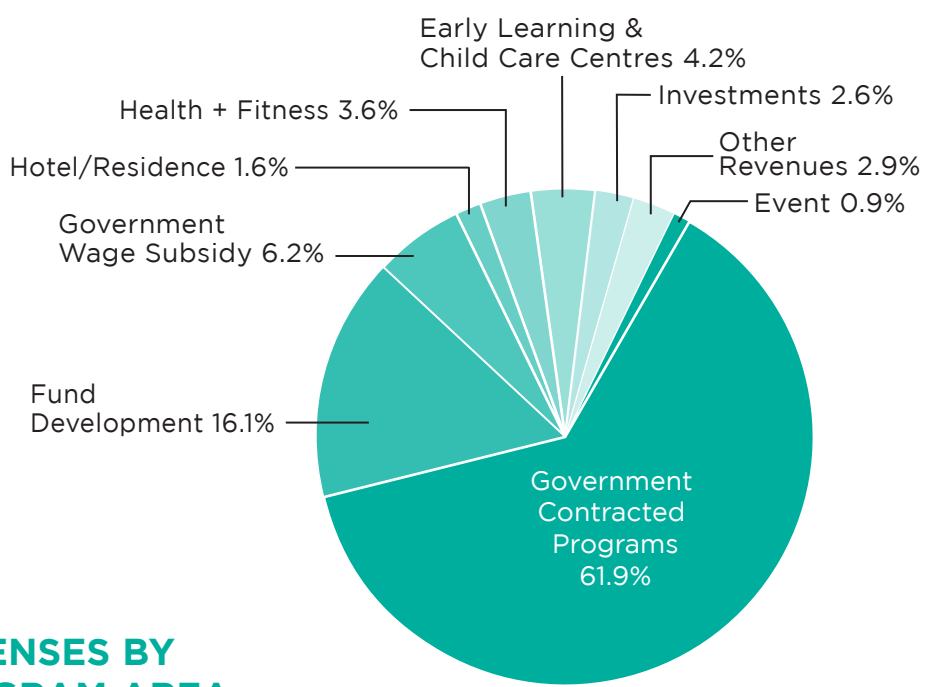
After temporarily closing our four child care centres at the onset of the pandemic, we reopened Emma's Early Learning and Child Care Centre to provide care for the children of essential workers.

New food programs were organized out of Crabtree Corner Community Resource Centre to provide hampers to families in need.

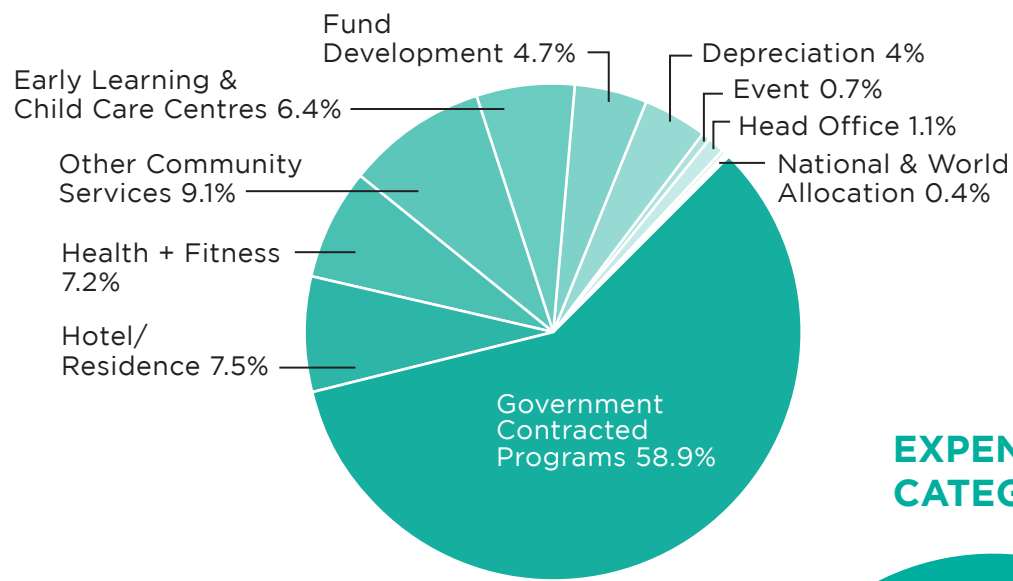
Staff transitioned to work from home where possible, and programs quickly adapted to keep everyone safe. The organization banded together to support each other and the community.

# 2020 FINANCIAL HIGHLIGHTS

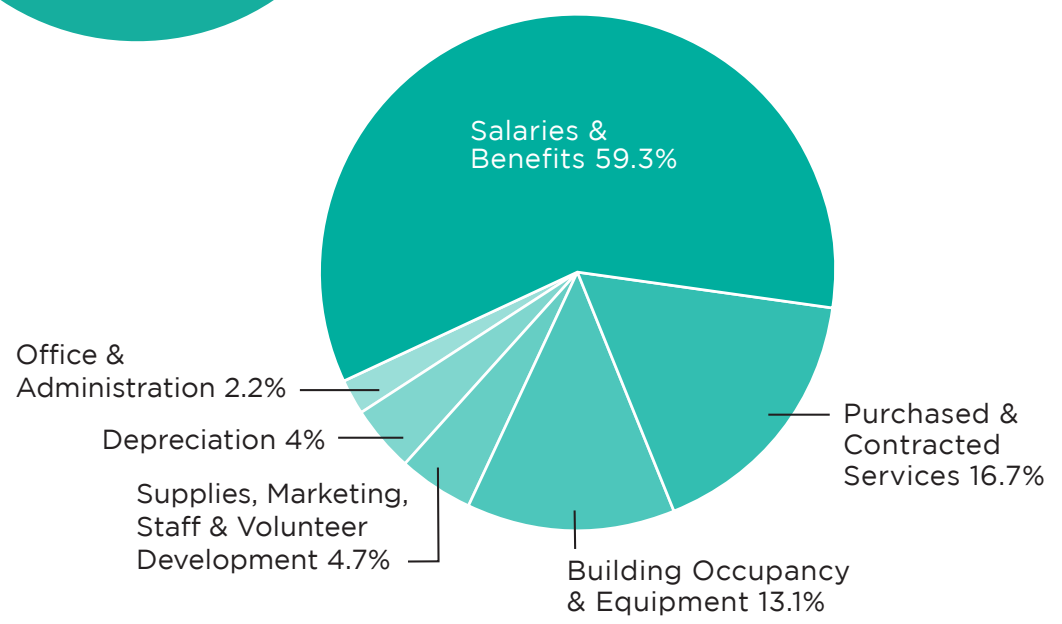
## REVENUES



## EXPENSES BY PROGRAM AREA



## EXPENSES BY CATEGORY



# BALANCE SHEET

As of December 31, 2020

## ASSETS

Cash and Cash Equivalents	9,756,130
Short-term Investments	656,430
Accounts Receivable	2,727,004
Inventory and Prepays	567,898
<b>Total Current Assets</b>	<b>13,707,462</b>

Restricted Investments	3,146,338
Long-term Investments	5,721,802
Property and Equipment	53,925,126
<b>Total Assets</b>	<b>76,500,728</b>

## LIABILITIES AND FUND BALANCES

Accounts Payable and Accrued Liabilities	3,173,422
Deferred Revenue	3,276,389
Current Portion of Capital Lease Payable	10,276
Current Portion of Mortgage Payable	616,914
<b>Total Current Liabilities</b>	<b>7,077,010</b>

Capital Lease Payable	14,338
Mortgage Payable	3,903,285
Deferred Revenue	1,205,005
<b>Total Liabilities</b>	<b>12,199,638</b>

### Fund Balances allocated to:

Unrestricted	524,073
BC Housing Replacement Reserve	1,272,343
Board Designated Endowment Fund	2,205,686
Board Designated Capital Repair and Replacement Fund	4,603,573
Board Designated Legacy Fund	568,801
Board Designated Sustainability Fund	479,328
Board Designated Employment Program Fund	4,730,174
Board Designated COVID-19 Fund	3,450,000
Capital Fund	44,343,119
Donor Designated Endowment Funds	2,123,993
<b>Total Fund Balances</b>	<b>64,301,090</b>

**Total Liabilities and Fund Balances 76,500,728**

# STATEMENT OF REVENUES AND EXPENSES

For the year ended December 31, 2020

## REVENUES (Operating and Capital)

Government Contracted Programs	27,820,629
Fund Development	7,220,405
Government Wage Subsidy	2,810,646
Hotel/Residence	734,477
Health + Fitness	1,609,684
Early Learning and Child Care Centres	1,879,580
Investment Revenues	1,166,615
Other Revenues	1,322,793
Women of Distinction Awards Event	415,407
<b>Total</b>	<b>44,980,236</b>

### Fund Development revenue includes the following:

Donations	6,571,683
Government Grants	596,722
Gaming	52,000
<b>Total</b>	<b>7,220,405</b>

## EXPENSES BY PROGRAM AREA\*

\*Expenses by program area include allocations from head office of common administrative and support costs.

Government Contracted Programs	20,679,367
Hotel/Residence	2,624,534
Health + Fitness	2,509,024
Other Community Services	3,188,775
Early Learning and Child Care Centres	2,255,789
Fund Development	1,669,011
Depreciation	1,419,826
Women of Distinction Awards Event	228,542
Head Office	375,366
National and World Allocation	131,192
<b>Total</b>	<b>35,081,426</b>

The excess of revenues over expenses is a result of a multi-year provincial contract and funds designated for capital projects.



# STRONG START FOR CHILDREN

YWCA Metro Vancouver has long advocated for universal child care for families.

We operate four early learning and child care centres, including free short-term care for families in the Downtown Eastside and care for the children of teen mothers working to complete high school.

YWCA Emma's Early Learning and Child Care Centre continues to operate as a prototype site to trial a \$10 a day system.

**194** children received quality care at YWCA's child care centres, including **11** children of teen moms so they could finish high school.





# SMART CHOICES FOR YOUTH

In response to COVID-19, YWCA after-school programs moved online and served mixed-gender groups. In 2020, online delivery allowed us to reach students beyond the Vancouver and Surrey school districts.

**425** Grade 7 students participated in YWCA after-school youth education programs.

**235** Grade 8-10 students took part in YWCA Dating Safe. They gained knowledge and skills to develop healthy relationships free from violence and abuse.



**123** Grade 11 and 12 girls were matched with **123** professional women to gain leadership skills and explore career options through the YWCA High School Mentorship program.

# BUILDING SKILLS AND ECONOMIC INDEPENDENCE

**796** job seekers received specialized employment support through **13** YWCA employment programs.

**2,821** people accessed job search assistance through the YWCA's WorkBC Employment Services Centres.



## New program: YWCA TechLink

YWCA TechLink's impact is twofold. It is an employment program for job seekers in Metro Vancouver who are looking to start their careers in IT and tech, and it is also a free helpdesk resource for those who need extra support now that so much has moved online due to COVID-19.



*YWCA TechLink gave me the foundation I needed to break into the growing tech industry. It also gave me the platform to be truly creative in my work, help build my self-confidence and shine. I was able to find a job in a customer support role in one of the fastest and most innovative tech companies in Canada, just before completing the program."*

- Hannah, TechLink program alumna

# SUPPORTING ACCESS TO JUSTICE

The COVID-19 pandemic has contributed to a 20-30% rise in domestic violence in some locations across Canada.

Women experiencing intimate partner violence face a distressing situation during the pandemic, with fewer options to leave and stay away.

The YWCA Legal Education Program aims to address the complex legal, financial and emotional challenges facing women and their children leaving violence.

**150** clients accessed our Staff Lawyer's services, including workshops, legal information and full legal representation in family law.



# MAKING AFFORDABLE HOUSING A REALITY



**739** single mothers and children made their home in one of **12** YWCA housing communities.



## **New program: YWCA Housing Circle**

As part of and funded through Canada's Homelessness Strategy, the YWCA Housing Circle Program provides support and financial aid to single and parenting women, with priority given to Indigenous women. The Housing Circle has provided grants to 33 women, to help cover rent and other costs.

## NOURISHING THOSE IN NEED

The YWCA Rooftop Garden remained in operation during the pandemic and **1,600 pounds** of produce were harvested for Crabtree Corner and other YWCA programs.

In response to the pandemic, a new food program provided families with hampers of fresh produce and other staples, as well as gift cards and bus passes. Frozen, ready-made meals were donated, so families could make complete dinners. With both financial and in-kind support from the community, we delivered **40** hampers a week to families.



**23,752** meals were served at YWCA Crabtree Corner in the Downtown Eastside.

# SUPPORTING MOTHERS WHO ARE PARENTING ALONE

YWCA Single Mothers' Support Services bring mothers together to connect at weekly group meetings. They build bonds, share resources and become role models and support for each other to work towards their shared goal of reaching economic independence. Since spring 2020, groups have moved online and continue to provide an essential connection.

**212** single mothers took part in **16** YWCA Single Mothers' Support Groups, including two specialized support groups for single mothers of children with special needs.



*Not only has my life been greatly impacted since finding the YWCA, it has impacted my children's lives as well. They see the power of kindness, of moms helping and empowering other moms. My son met his best friend (really his only friend) at the single moms' support group. My daughter has seen women helping women and has decided to pursue a career in social work.*

- Cathy, participant in Single Moms of Children on the Autism Spectrum Support Group



LET'S HAVE  
SOME FUN

CHIRPI

RODDY

# THANK YOU TO OUR 2020 GENEROUS DONORS!

We have done our best to include everyone who made a contribution of \$100 or more between January 1 and December 31, 2020. We apologize for any errors or omissions.

Please contact us at 604 895 5850 if we have made an error in your acknowledgement.



**NEXT  
125**

## In 2022, YWCA Metro Vancouver will celebrate 125 years of changing lives

In anticipation of this milestone, we launched The Next 125 - a campaign driven by a group of passionate people who are transforming our communities through donations of \$25,000 or more. Our goal is to raise \$12.5 million to meet the growing needs of our region and continue our work to support women and children. We are honoured to highlight the generosity of these dedicated individuals. \*Campaign gifts received from August 2017 - March 2021. **To join the Next 125 Campaign, please contact Brenda Ulmer at [bulmer@ywcavan.org](mailto:bulmer@ywcavan.org) or 604 895 5764.**

### The Next 125 Donors and Ambassadors

**\$2,500,000+**

Anonymous Donor

**\$1,000,000 -  
\$2,499,000**

Summer Split Foundation,  
held at Vancouver  
Foundation

**\$500,000 - \$999,999**

Suzanne Bolton and  
Jefferson Mooney

Pacific Spirit Foundation

Anonymous Donor

**\$250,000 - \$499,999**

Cindy and Ryan Beedie

Kitty Heller Memorial  
Fund, held at Vancouver  
Foundation

Mary C. Jordan Family

North Family Foundation

Valley Properties Ltd &  
Rockcliffe Estates Ltd.

Anonymous Donor

**\$150,000 - \$249,999**

The Grayross Foundation,  
held at Vancouver  
Foundation

Jeri Krogseth and Krogseth  
Family Foundation

Shewan Foundation

3 Anonymous Donors

**\$100,000 - \$149,999**

Megan Abbott

Armstrong Family  
Foundation

Diamond Foundation

Anne Dobbie and Dennis  
Ewasiuk

The Houssian Foundation

Moiz and Nadia Lalani  
family

Joan C. McCarter  
Foundation at the Victoria  
Foundation

Joanie McEwen and Irwin  
Nathanson

The Somerset Foundation

Windsor Plywood  
Foundation, held at  
Vancouver Foundation

Dr. Ann Worth Charitable  
Foundation

**\$50,000 - \$99,999**

Dilawri Group of Companies

Diane Forsythe-Abbott  
Luncheon

Mann-Condon Fund

Sylvia Ommanney

Seedlings Foundation

The Stollery Charitable  
Foundation

Glenna Urbshadt and Katie  
Trydal

Bruce and Lis Welch

Dr. Kim van der Woerd and  
Dr. Ron Roesch

Anonymous

**\$25,000 - \$49,999**

Paul Balfour and Cynthia  
Miles

John Fluevog Shoes

The Gardiner Family

Lauren Gehlen and Jamie  
Houssian

Y.P. Heung Foundation

Peggy Ho Yuen

Catherine Imrie

In memory of Dr. Bik May  
Wai Lam

David & Dorothy Lam  
Foundation

Lily Lee

The Lobstick Foundation

Mirhady Family Fund, held  
at Vancouver Foundation

Munford Family Foundation

The Estate of Jennifer B.  
Rodrigues

A Tribute to Grace Tee

Whittall Family Fund, held  
at Vancouver Foundation

The Wolrige Foundation

3 Anonymous Donors

**LEGACY GIFT**

Janet Ames

**THE NEXT 125  
AMBASSADORS**

Diane Forsythe-Abbott

Lauren Gehlen

Ann Mortiffee

Dr. Kim van der Woerd

Lis Welch

Cynnise Woodward

### YWCA Leadership Circle

**VISIONARY  
(\$50,000+/3 YEARS)**

Megan Abbott

Armstrong Family  
Foundation

BC Ministry of Advanced  
Education and Skills  
Training

BC Ministry of Children and  
Family Development

BC Ministry of Public Safety  
and Solicitor General

BC Ministry of Social  
Development and Poverty  
Reduction

BC Ministry of Sports,  
Recreation, Arts and  
Culture

Cindy and Ryan Beedie

Suzanne Bolton and  
Jefferson Mooney

Canucks for Kids Fund

Cause We Care Foundation

City of Burnaby

City of North Vancouver

City of Vancouver

Department for Women and  
Gender Equality Canada

Diamond Foundation

Dilawri Group of Companies

Anne Dobbie and Dennis  
Ewasiuk

Employment and Social  
Development Canada

John Fluevog Shoes

The Gardiner Family

Government of Canada  
- Canada Mortgage and  
Housing Corporation

Government of Canada,  
administered by  
Employment and Social  
Development Canada

Government of Canada -  
Reaching Home - Canada's  
Homelessness Strategy

Government of Canada,  
administered by United Way  
of the Lower Mainland

Allan & Gill Gray  
Philanthropy

The Grayross Foundation  
held at Vancouver  
Foundation

The Hieros Foundation

The Houssian Foundation

Immigration, Refugees and  
Citizenship Canada

Indigenous Services Canada

Mary C. Jordan Family

Jeri Krogseth and Krogseth  
Family Foundation at the  
Victoria Foundation

Reay & Lynda Mackay  
Foundation

Joan C. McCarter  
Foundation at the Victoria  
Foundation

Joanie McEwen and Irwin  
Nathanson

Mirhady Family Fund, held  
at Vancouver Foundation

North Family Foundation

Sylvia J. Ommanney

Pacific Spirit Foundation

The Province of British  
Columbia - BC Housing

Public Health Agency of  
Canada

RBC Foundation

Scotiabank

Seedlings Foundation

Shewan Foundation

Shoppers Drug Mart Life  
Foundation

The Somerset Foundation

The Stollery Charitable  
Foundation

Streethome Foundation

Summer Split Foundation,  
held at Vancouver  
Foundation

TD Friends of the  
Environment Foundation

Sherry Tryssenaar

Glenna Urbshadt and Katie  
Trydal

Valley Properties Ltd &  
Rockcliffe Estates Ltd.

Vancity

Vancouver Foundation

Bev Wallace

Bruce and Lis Welch

West Vancouver 2010  
Legacy Foundation

Windsor Plywood  
Foundation, held at  
Vancouver Foundation

Dr. Ann Worth Charitable  
Foundation

10 Anonymous Donors

**CATALYST  
(\$15,000-\$49,999/  
3 YEARS)**

Accenture

Ames Family Foundation

Paul Balfour and Cynthia  
Miles

Shirley Barnett

BC Hydro

Roberta Lando Beiser

Boeing Canada-AeroInfo

J. Armand Bombardier  
Foundation

The Brick Warehouse  
Corporation

Buddhist Compassion Relief  
Tzu-Chi Foundation of  
Canada

Canadian Western Bank

Chan Sisters Foundation

The Co-operators

Coast Capital Savings

Community Food Centres  
Canada

Caroline Dunn

Electronic Arts (Canada)  
Inc.

Face the World Foundation

First West Foundation and  
the Envision Financial  
Community Endowment

Fluor Canada Ltd.

G&F Financial Group

Government of Canada's  
Emergency Community  
Support Fund and  
SurreyCares Community  
Foundation

Lauren Gehlen and Jamie  
Houssian

Nancy and Tom Gougarty

Y.P. Heung Foundation

Steven Hill

Peggy Ho Yuen

Buchanan & Alice Huang

The Hylcan Foundation

The IA Financial Group

The ILLAHIE Foundation

Diane and Warren Johnson

Kaatz Foundation

In memory of Dr. Bik May  
Wai Lam

David & Dorothy Lam  
Foundation

Edith Lando Charitable  
Foundation

Lily Lee

The Lobstick Foundation

Fiona Macfarlane

The McLean Foundation

Andrew Mahon Foundation

Mann-Condon Fund

Methanex Corporation

Munford Family Foundation

Herma Neyendorff

Daniel Nocente and Pauline  
Nocente

Nordstrom

PNG Enterprise Foundation

Beverlee Park and Jim  
Logan

The Pender Fund, held at  
Vancouver Foundation

Port of Vancouver

Provincial Employees  
Community Services Fund

Raven Foundation

Real Estate Board of Greater  
Vancouver - REALTORS  
Care

SPARC BC

Sage Foundation

Patricia and Ken Shields

Don & Joan Stanley Fund at  
the Edmonton Community  
Foundation

Ratana Stephens

Eileen Stewart

The UPS Foundation of  
Canada

Uber

University of British  
Columbia

Urban Impact

Dr. Kim van der Woerd and  
Dr. Ron Roesch

Van Kam Freightways

Variety - The Children's  
Charity of BC

Verch Charitable Fund

The Amir and Yasmin Virani  
Family Foundation

Mischa Weisz Foundation

The Wolrige Foundation

8 Anonymous Donors

**YWCA Inner  
Circle**

**PLATINUM CIRCLE  
(\$2,500-\$14,999)**

Acero Capital

Barbara and Martin  
Aidelbaum

Anako Foundation

AVC Management Inc.

BC Ministry of Tourism,  
Arts & Culture

BC Nurses' Union

Barb and Brian Bahry

Sandra Beaugard



Mebrat Beyene & WISH Drop-in Centre Society Friends	McCarthy Tétrault Foundation	Wanda Costuros	Canadian Western Bank	Herb and Aster Osen	BC Greenhouse Builders Ltd.	Stephanie A. Giammarino
BMO Financial Group	The McGrane-Pearson Endowment Fund	Fasken	Capital Event Management Ltd.	Freda Pagani	BC Maritime Employers Association	Bob and Dana Golden
Bovie Family Fund	McWaters Endowment Fund	Lawrie Ferguson	Central 1 Credit Union	Betti Port		Dr. Lesley Graydon
The Brick Warehouse Corporation	MakeWay	Peter and Gillian Fograscher	Dr. Lloyd and Kay Chapman Charitable Foundation	Moura Quayle		Elaine Grenon
Alix Brown	MariaMarina Foundation	Carol Givton	Byron Chard	Vera Radyo	BC Women's Hospital - Women's Health Research Institute	Deryl and Stephanie Griffith
Betty J. (Elizabeth) Burrell and Richard Campbell	Claudette Martin	HCMA Architecture + Design	Ashley Chester	Red Envelope Foundation, held at Vancouver Foundation	Joan Beaty	C. Anne Hale
Canadian Scholarship Trust Foundation	JoAn and Michel Maurer	Stephen Hall	CitySpaces Consulting Ltd.	Pearl Roberts	Lori Becker	Dr. Judith Hall, OC
Cansure	Marilyn Mauritz	The Hamber Foundation	Leslie G. Cliff and Mark P.Tindle	Luana Robertson	Brenda Benham	Dana Lee Harris
Sherry Cavallin	Sandra Menzer	Joshua Haywood	Patti Cockcroft	Judy Rogers	Virginia Bird	Craig Hathaway
Diana and Bruce Chan	Moore Family Foundation	Dayna Holland	Shelley Crawford	Elizabeth Roy	Blank Canvas Fund, held at Vancouver Foundation	Tony Hepburn
Chyzowski Charitable Foundation Inc	Dianne Newell	Julia and Hwa Yul Kim	Crowe MacKay LLP	Laura and Richard Samaroo	Muriel Ann Boltezar	Ian Hibbert
Lisa Coltart	Lindsay Paterson	Diana Lam	Lorraine Cunningham	Karen Sander	Susan and Steve Borthwick	Tara Hinecker-Jacques
Horacio Crespo	Peace Arch Hospital & Community Health Foundation	Linda Loo	Lorraine Dansereau	Jenny Sandy	Daphne Bramham	Andrew Hiscox
The Dayhu Group of Companies	Lindsay Perceval	Albert J. McClean	Davidson & Company LLP	Dr. Lorna Sent	Christine Brophy	Melinda Hockley
The Lillian & Ross Davidson Fund held at Vancouver Foundation	Servane Phillips	Pauline and Murray McInnes	Leslie Diamond	Simon Fraser University - Faculty of Education	Cicely Bryce	Lois Hollstedt
Elayna and Bruce Diemert	Primex Investments Ltd.	Caroline McIntyre	Danica Djurkovic	Robin Smith	Alexander and Susan Burak	Kimberley Horrocks
Mary-Jo Dionne and Chad Bentley	Geri & Howard Prior	Mary and Roderick McNeil	Nicola Donaldson	Timothy Smith	Cathy and Sandy Burpee	Ann Howe
Jill Donaldson and Mike Brankston	Quan Family Fund, held at Vancouver Foundation	Don Madsen	Cheryl Eckert	Smoking Gun Inc.	Blair Calkins	Gayle Hunter and Brian Moghadam
Cassie Doyle	Mathisen Family Private Foundation	Mathisen Family Private Foundation	Bethany Edmunds	Patrick Soares	Cheryl Carter	Jane Hutton
Earnscliffe Strategy Group	Andre and Brock Rowland Foundation	Kirsty Maxwell and Philip Salt	Don Enns	Carole Anne Soong	Leslie Carter	Debbie Jay
East Side Games Inc.	Robert Allan Ltd.	Mary Lou Miles	Evalina Beauty Limited	Sheryl and Keith Spencer	Glen Chalcraft	Sharon Jeroski
Jena Fair	Joan Sheehan	Donna Molby	David Ferguson	Arden Sutherland	Ghislaine Chan	Marni Johnson
Fairbairn Foundation	Simon Fraser University	Rita Morin and Brian Follett	Jules Ku-Lea and Chester Field	Ida and Thomas Tait	Liz Chaston	Judith Joseph
Charles and Lucile Flavelle Family Fund, held at Vancouver Foundation	Sandy So	Christian and Dan Morrison	Marguerite Ford	Debra Tarigan and Stephen Gowan	Sandra Cheung	Amy Juschka and Kevin Hollett
Judy Garner	The Stewart Fund	Caroline North	GNK/Waypoint Insurance	Michael Tham	Jason Chow	Amy Juschka and Kevin Hollett
Gasket Games Corp.	Anne M. Stewart	Kathleen Pomeroy	Joy Gaze	Traction on Demand	Susan Climie	Paul Kennedy
Helen Ghabel	Don Stuart	Tracy Proke and David Vogt	Anne Giardini	Nancy Trott	Mary Collyer	Cory and Mairead Kent
Catherine Gibson and Geoffrey Pitman	Surrey Homelessness and Housing Society	Raymond James Canada Foundation	Prem Gill	Vancouver Pacific Lions Club	Bruce Colwill	Lynne Kent
Karen Gilmore	Beverly Tamboline	Morna and Michael Creedon Sileika	Maryke Gilmore	Vancouver Sun Raise a Reader Campaign	Hugh and Sharon Cooper	Nancy Kent
Government of Canada's Emergency Community Support Fund, Coquitlam Foundation, Port Moody Foundation and Port Coquitlam Community Foundation	TD Canada Trust	Gillian and Russell Smith	Gore Mutual Insurance	Carla Villar & James Dunn	Pamela Cox	Elizabeth and Rudy Kerklaan
Government of Canada's Emergency Community Support Fund and Maple Ridge Community Foundation	TD Canada Trust Cloverdale Crossing	Mark and Whitney Starkey	Barbara Grantham and Andrew Wilkinson	Vine Group Ltd	Curibot Tech Corp	Janice Ketcham
Government of Canada's Emergency Community Support Fund and Abbotsford Community Foundation	Teck	Woon Ai Tsang	James Gray	Westminster Management Corporation	DA Architects + Planners	Omair Khan
Greater Vancouver Board of Trade	TELUS	Union of BC Performers	HSBC Bank Canada	Westside Music Together	Brett Davidson	Latty Khosla
Oriana Green	UBC Faculty of Applied Science	Barbara Vanderburgh Law Corporation	Habitat Systems Inc.	Wiegand Memorial Foundation Inc.	Barbara Devlin	Kids Physio Group
The Giustra Foundation	Unbounce Marketing Solutions Inc	Dean Wadsworth	Braden Haggerty	Janet Wiegand	Direction(s) Consulting Inc.	Clifford Kondratiuk
Harris & Company LLP	Urban Arts Architecture Inc.	Warren and Twyla Wall	Celeste Haldane	Susan Witter	Laurent Dobuzinskis	Sandra and Bruce Kornelsen
Health Sciences Association of BC	Ventana Construction Corporation	Wheeler Family Foundation	Ann Halicki	David Wong	Louise Donovan	Stephan Krieger
Catherine Imrie	Art Vertlieb-Bev Briscoe Foundation	Judi Whyte	Kevin Halicki	Tracy Wong	Fiona Douglas-Crampton	Petra Kuret
Industry Training Authority	Clare Waters	Albertje Willems Smits	Penny Hambrook	Woo To See You Fashion Inc.	Dowdle & Gauthier Families	LBC Studios
Paul F. Joseph	Louise Watson	4 Anonymous Donors	Teresa M. Heung	Stella Wu	Lorraine Duclos	Catherine Lanyon
Denise and Pentti Karkkainen	Wawanesa Mutual Insurance Company	<b>SILVER CIRCLE (\$1,000-\$1,699)</b>	Hinterland Studio Inc.	Sue Yamamoto	Heather Duffy and Al Tebworth	Jayne Le Vierge
Kiwanis Club of Vancouver	Philippa Wilshaw	Timothy Ames	Tamara and Eric Hung	Peter & June Young Legacy Fund, held at the Vancouver Foundation	Lyne Dufresne	Kathy Leavens and Peter Noble
Leona Kolla and Alfred Schultz	Wilson Wong	Robert Atkinson	Invictus Accounting Group LLP	Youth and Philanthropy Initiative	Valerie Dunsterville	Nicole Lee
Kwantlen Polytechnic University	Wing Hang Henry Wong	Reagan Attle and Chris Phillips	Dr. Sandra Jenneson	Gina and Hudson Zhang	Ashley Elchuk	Nicole Lenihan
Marette Lee	Yeates Family	BC Council for Families	Cal and Sandra Johnson	11 Anonymous Donors	Bob Elton	Suzanne Lewis
Lohn Foundation	York House School	Christina and Chris Bennett	Patricia Laidley	<b>BRONZE CIRCLE (\$500-\$999)</b>	Valerie Embree	Hugh and Judy Lindsay
	4 Anonymous Donors	Leslie and Peter Blake	Ledcor Group & Employees	Chris Adams	Engineers and Geoscientists BC	Barbara Livingston
	<b>GOLD CIRCLE (\$1,700-\$2,499)</b>	Joelle Bradley	Kaitlin Lee	Barbara and Michael Aldritt	Patricia Evans	Benita Loughlin
	Airstream Heating & Air	Doreen Braverman	Sheryl Lee	Kim Allard	Susan Evans	Colleen Lowe
	Deborah Armour	Breakfast Club of Canada	Kathy Lilyholm	Suzanne and Olin Anton	JoAnne and Terry Fahr	Betty Anne Loy
	Atomic Cartoons	June Bros	Connie Linder	Valerie Arlette	Risa Fahy	Gail McBride
	Kamal Basra	Jack Brownhill	Christine Look	BCCH ACU	Thalia Field	Nancy McKinstry
	Canada Helps Partner Giving Program	Susan Byrom	Tracey Lundell	Catherine Backman	Grace Fong	K. Allison MacDonald
	Change Healthcare Information Workflows Solution	CIBC Children's Foundation	Dr. Moira McConnell	Penny Ballem	Dr. Joan Ford	Kathleen Macdonald
	Employees of Children's & Women's Health Centre of BC	COVID-19 Women's Initiative	Caroline McMahon	Jennifer Baird	Carole Forsythe	Mary L. Macdonald
		Angela Calla	Sally MacLean	Joanne Barker	Foundation Real Estate Vancouver	Betty-Ann MacInnes
			Carol E. Mayer		Kate Francois	Martin MacLachlan
			Nancy Morrison		Kim Fronc	Kim Martin
			National Council of Jewish Women of Canada		Susan Fugman	Victoria and John Mendes
					Elizabeth Gautschi	Michelle Merry
					Nadja Gehriger	Jenny Miles

Yvonne Mitchell	Tracy Theemes	Katarina Gabrilo	Pearl Roberts	<b>In honour of B+H Architects and CHIL I. Design</b>	<b>In honour of Electronic Arts (Canada) Inc.</b>	<b>In honour of Claire Jones</b>
Preeya Mitchell	Byron Thom	Joy Gaze	Ms. Lenore Rosen and Dr. Joan Robillard	Anisa Marynowski	Hinterland Studio Inc.	Jane Jones
Elizabeth Model	Lisa Turner	Helen Ghabel	Judy Rogers	<b>In honour of Barb Bahry</b>	<b>In honour of Amber Farrow, Kayla Farrow and Kevin Farrow</b>	<b>In honour of Jean-Pierre Kamel</b>
Kirsten Molstad	Ahmet Ulker	Karen Gilmore	Debbie Rowe	Susan Fugman	Janet Kidd	Jelisia Kamel
Patty Montpellier	Brenda Ulmer	Maryke Gilmore	Gail Ruddy	<b>In honour of Our friends in Basel</b>	<b>In honour of Ashley Ferguson, Kaylee Ferguson and Linda Ferguson</b>	<b>In honour of A.K. &amp; K.W.</b>
Clark Morris	VGH & UBC Hospital Foundation	Carol Givton	Jessie Rupp	Acero Capital	David Ferguson	Anonymous
Norah Morrow	Marg Van Wielingen	Bob and Dana Golden	Jill Schroder and Michael Raynolds	<b>In honour of Shub Bawa</b>	<b>In honour of Mary-Jo Fetterly, David Sweet and Doug &amp; D. Sweet</b>	<b>In honour of Patricia Korzilius</b>
Molly Mota	Vancouver Community College Faculty Association	M J. Golden	Christine E. Smith	Jennifer Caplan	<b>In honour of Mary-Jo Fetterly, David Sweet and Doug &amp; D. Sweet</b>	<b>In honour of Jeri Krogseth</b>
Money Coaches Canada	Mary Vecchio	Nichola Malim Hall	Philippa Smith	<b>In honour of Maya Bichengo</b>	Katelynn Fetterly	Nancy Matheson
Murchie's Tea & Coffee Ltd.	Tayber and Jacqueline Voyer	Maureen Hannah	Alaina Soucie	<b>In honour Black Lives Matter</b>	<b>In honour of the Diane Forsthe-Abbott Crabtree Luncheon</b>	<b>In honour of Brian and Jocelyn Kroschinsky</b>
June Murdoch	Jennifer Wade	Steven Hill	Sandra Stevenson	Tami Amit	Carol Mayer	Glenna Urbshadt
Sarah and Andrew Nathanson	Dianne Welch	Dayna Holland	Anne Stewart	<b>In honour of Jill Bodkin</b>	Anonymous	<b>In honour of Dan and Samantha Kroschinsky</b>
Helen O'Brian	Nicola Webb	Lois Hollstedt	Eileen Stewart	Nancy and Tom Gougarty	<b>In honour of Suzanne Bolton</b>	Glenna Urbshadt
Karen Ong	Kaayla Wildor and Robert Wilds	Kimberley Horrocks	Geraldine Stringer	<b>In honour of Liz Brant and A. Cumming</b>	Daniella Aitken	<b>In honour of Kasper Kukura</b>
Pamela Oram	Donna J. Wilson	Tamara and Eric Hung	Arden Sutherland	Shannon Mooney	<b>In honour of Ncheli Gambule and Ncheli Kufigwa</b>	Alex Duncan
Wendy Orvig	Tracy Wong and Brendan Rush	Jane Hutton	Sherry Tryssenaar	Tracy Wong and Brendan Rush	<b>In honour of Joy Gaze</b>	<b>In honour of Sammy Lammario</b>
Lorne Palmer	Yaletown Mini Storage Ltd.	Brenda Jebsen	Woon Ai and Victor Tsang	<b>In honour of Leanne Bradley, Kathleen Fournier, Dianne Lapierre, Sheila &amp; H. McLean and Edith Taylor</b>	<b>In honour of Tara Gilfillan</b>	Cassandra Iammarino
Parker Family Fund	24 Anonymous Donors	Mary Jordan	Lynne Tyler	Yvonne Alexander	<b>In honour of the Priebe Family and Girlfriends near and far</b>	<b>In honour of Tammy Lawrence</b>
Aashna Parmar	<b>YWCA Legacy Circle</b>	Sheila and Douglas King	Brenda Ulmer	<b>In honour of Liz Brant and A. Cumming</b>	Adrienne Ross	Francine LeBlanc
Brian and Theresa Pearson	<b>PLANNED GIFTS</b>	Jeri Krogseth	Brenda Ulmer	<b>In honour of Friends of Villa Carital</b>	<b>In honour of My grandmother</b>	<b>In honour of Shelley Lee</b>
Shelley Poitras	Judith Adelman	Shawn Laari	Dr. Kim van der Woerd and Dr. Ron Roesch	Shirley Smiley	Martha Carter	Kaitlin Lee
Monique Poncelet	Puspa Affandi	Barbara Lane-Eakin	Marg Van Wielingen	<b>In honour of B. Caulfield</b>	<b>In honour of Kendra Green</b>	<b>In honour of Lenihan and S. Families</b>
Christopher Poseley	Sheila Allen	Kathy Leavens and Peter Noble	Lisa Vogt	Patricia Patrick	Aileen Green	<b>In honour of The Lilyholm Family and The Davison Family</b>
Lynda Prince	Janet Ames	Jeanne Lee and Desmond Chew	Jennifer Wade	<b>In honour of Shuet Y. Chan</b>	<b>In honour of Monique Harlock</b>	Kathy Lilyholm and Mike Davison
Dr. Jerilynn Prior	Deborah Armour	Hugh and Judy Lindsay	Mary Wallace Poole	Tammy Yam	Mary Ann Clarke Scott	<b>In honour of K. &amp; A.M.</b>
Rasul Learning Group Inc.	The Honourable Janet Austin	Bev Lindsey	Margaret Waterton	<b>In honour of Patricia Chu and Jon Wong</b>	<b>In honour of Susan Hill</b>	Keith Martin
Saida and Firoz Rasul	Denise Baker	Margaret J. Livingstone	Bruce and Lis Welch	Kim Allard	Jane Hutton	<b>In honour of Nancy McKinstry</b>
Sandy and Max Reimer	Diane Baker	Jean Macdonald	Anita Welke	<b>In honour of M. Collyer, J. Neil and K. Neil</b>	<b>In honour of Barbara Hinton</b>	Glenna Urbshadt
Sandra and Donald Robertson	Sheila Begg	Mary Macdonald	Margaret Williams	Mary Collyer	Joyce Hinton	<b>In honour of Peggy L. MacIsaac</b>
Ms. Lenore Rosen and Dr. Joan Robillard	Alise Benner	Valerie Mann	Susan Witter	<b>In honour of Jaydene Cormier, Cohen Rumohr, Gabrielle Rumohr, Liam Rumohr</b>	<b>In honour of Valerie Mann and John Condon</b>	Teresa Ferguson
Judi Robson	Suzanne Bolton and Jefferson Mooney	JoAn and Michel Maurer	Janet Wood	Gordon Rumohr	<b>In honour of Tessa Hoole and Madison Jacob</b>	Jane Delamere
Val Roddick	Susan and Steve Borthwick	Joyce McCusker	Paul Wu	<b>In honour of Kennedy Crawford</b>	Warren Hoole	<b>In honour of Dan Mason</b>
Leia Rogers	Anne Boyle	Mary and Dan McDougall	Lisa Yoo	Glen Chalcraft	<b>In honour of Jane Hope, Jessie Johnston and Kelly Wolfy</b>	Melanie Dorchester
Clarke Ross	Sally Bryant-Ballingall	Pauline McInnes	34 Anonymous Donors	<b>In honour of Zoe Dao-Kroeker and Lara Kroeker</b>	Christie Mahovich-Little	<b>In honour of Molly Massot</b>
Patricia Ross	Betty J. (Elizabeth) Burrell and Richard Campbell	Christy McLeod	ESTATES	Loc Dao	<b>In honour of Blyth Hughes and Niki Hughes</b>	Stephanie Massot
Jessie Rupp	Aletha Buschman	Laurie McLeod	Alma VanDusen Fund	<b>In honour of Jean Donaldson</b>	Megan Hughes	<b>In honour of Mike Bike Clients</b>
Melanie Rupp	Celia Campos	Caroline McMahan	Estate of Harry Archibald	Nicola Donaldson	<b>In honour of The Jennings Family</b>	Mike Bike
Lorelei D. Russell	Barb Cassack and Jack Stevens	Jill Munro-Metheral and Shawn Metheral	P. M. MacKay Fund	<b>In honour of Kiora Duffin, Serena Duffin, Tom Duffin</b>	John Jennings	<b>In honour of Eleanor Miller</b>
SAP Canada Fund at Toronto Foundation	Pamela Chambers	Rita Morin	Estate of Carla Poppen	Lisa Wan	<b>In honour of Audrey M. Johnson</b>	Joelle Bradley
SCWIST	Diana and Bruce Chan	Wanda and Tony Morris	The Agnes MacKay Groundwater Publicover Fund	<b>In honour of Carolyn Eaton, Kory Fawcett, Carolyn Kelly-Smith, Linda Kelly-Smith, Derek Smith</b>	Caroline Johnson	Monica Mcleish
Dana Samis	Ann Coombs	Sheila Moynihan	The Mark and Phae Collins Fund	Julia Smith	<b>In honour of Shan Johnson</b>	<b>In honour of Nancy Morrison</b>
Caroline Sanche	Lynn Cooper	Renate Mueller	Estate of Irene Waine	<b>In honour of Emma &amp; Jill</b>	Glenna Urbshadt	Tapestry
Caroline Scheumann	Lyndy Corrigan	June Murdoch	Estate of Florence H. Walker	<b>In honour of Bill Ede</b>	<b>In honour of Heather Johnstone</b>	David Murphy
Mary and Klaus Schreiber	Shelley Crawford	Carolyn Neilson and Christopher Frigon	<b>Tributes</b>	Barb Harwood	Trevor Johnstone	<b>In honour of Lindsay Nielsen</b>
Duncan Shaw	Elaine Decker	Herma Neyndorff	<b>In celebration of Joelle Bradley</b>		Anonymous	Anonymous
Madeleine Shaw	Anne Dobbie and Dennis Ewasituk	Jan Noppe	Eleanor Miller			
Lorimer Shenher	Louise Donovan	Julia Nyberg and Alexander Moss	<b>In honour of Theodore Adams</b>			
Rhonda Sherwood	Fiona Douglas-Crampton	Pamela Oram	Alisha Adams			
Shauna Shortt	Heather Duffy and Al Tebworth	Alison Orr	<b>In honour of Joslyn Alderson</b>			
Michelle and Laurence Sing	Barbara-Anne Eddy	Tracey Osborne	Stephanie Dawe			
Luanne Sinnamon, in memory of Judy Martin	Jim Evans	Helen Oster	<b>In honour of Rosemary Arthur, Taybeh Bazargani, Daniel Drant, Elaine Grant, Nicholas Grant, Sadegh Khoshnood, Sam Khoshnood, Priscilla Messier and Thi Vo</b>			
Claudia Sjoberg	JoAnne and Terry Fahr	Janet Pattinson	Neda Grant			
Philippa Smith	Isobel Farrell	Lindsay Perceval	<b>In honour of the Honourable Janet Austin</b>			
Stacy and Douglas Smith	Lucile and Charles Flavelle	Genevieve Pinto	Lorraine Cunningham			
The late Marian Snowball	Dr. Joan Ford	Doreen Player	Anonymous			
Therese Soong	Marguerite Ford	Dr. Erika Plettner				
Amy M. Spencer	The Fota Family	Kathleen Pomeroy				
Kim Spencer-Nairn	Joan Fowler	Betti Port				
Laurie Sterritt		Quan Family Fund, held at Vancouver Foundation				
Barbara Stobie		Moura Quayle				
Cathy Strashok						
Surrey Board of Trade						

<b>In honour of Carina Nilsson</b>	<b>In honour of Lynne Tyler</b>	<b>In memory of Rosalyn Ing</b>	<b>In recognition of Cindy Beedie</b>	Barbara and Patrick Andrew	Mary and Vaughan Bruneau	Jasonda Desmond
Bree Galbraith	Stephen Tyler	Carole Anne Soong	Jennifer Caplan	Frank Anfield	Naomi Brunemeyer	Isabelle Diamond
<b>In honour of Alexandra Noel</b>	<b>In honour of Brenda L. Ulmer</b>	<b>In memory of Royetta Irish</b>	<b>In recognition of Ghezal Durrani</b>	Apple Inc.	Marie-Luise Brunnhofer	Lawrence Diamond
CJ Noel	Christina Price	Hai Nguyen-Irish	Mary Hudson	Natalie Archibald	Deb Bryant	Lynn Dillon
<b>In honour of Christine Ostyn</b>	<b>In honour of Ify &amp; Francis Umenyi</b>	<b>In memory of Kathy Johns</b>	<b>In recognition of Marceline Knihnitski</b>	James Armit	Diana Bulley	Mary Patricia Doherty
Bart Fransen	Chinwe Umenyi	Donna J. Wilson	Kristin Padilla	Marina Arnaud	Carolyn Burak	Shirley and Scott Donald
<b>In honour of Shahgufta Parveen</b>	<b>In honour of Kim van der Woerd and Ron Rosech</b>	<b>In memory of Margaret Jones</b>	<b>In recognition of The Krotez Family</b>	Artemis Gold Inc.	Sarah Burgess	Melanie Dorchester
Javeria Aslam	Irene van der Woerd	Ruth Jones and Keith Robinson	Sandra Krotez	Frances and Dave Ashdown	Laurel and Noel Burke	Shehni Dossa
<b>In honour of Betti Port</b>	<b>In honour of Christina W</b>	<b>In memory of Tony Knight</b>	<b>In recognition of the YWCA Management Team</b>	Michael Atwal	Theresa Burley	N. L. Dowad
Rita Morin and Brian Follett	Christina Meng	Penelope Tham	Deb Bryant	Debra Avis Wilson	Susan Burton	Warren Downs
<b>In honour of The Priebe Family</b>	<b>In honour of Nik Williams-Walsh</b>	Elizabeth Yip	<b>Endowments</b>	Brenda Aynsley	Marilyn Butt	Patricia Drugge
Lena Heidt	York House School	Anonymous	Rina Maria Bidin Fund	Amy and William Azaroff	George Cadman	Ashley and Michael Drummond
<b>In honour of Amy Robinson</b>	<b>In honour of Kory Wilson</b>	<b>In memory of Betty V. Longstaff</b>	The Daryl Bramall (Crabtree Corner) Endowment Fund for Women and Children Living in Poverty	B2 Gold Corp.	Dan Cameron	Alexandra DuBelko and Adam Rosenthal
Bonnie Foley-Wong	Basque Associates Inc.	William Longstaff	May Brown Leadership Endowment for Young Women	Debbie Babcock	Canfor Corporation	Margo Dunnet
<b>In honour of Eve Rotem</b>	<b>In honour of Margaret Wingert</b>	<b>In memory of Hiro and Saika</b>	The Crabtree Corner Endowment from Summer Split Foundation, held at Vancouver Foundation	Bad Feminist Book Club	Jennifer Caplan	Wendy Ebbs
Robin Gore	Penny Ballem	Jaroslava Belava	Ralph and Grace Fisher Endowment for Crabtree Corner	Susan Bailey	Alexandra Carlisle	Peter Edwards
<b>In honour of Anne Rowles</b>	<b>In honour of Ruby Wong</b>	<b>In memory of Dorothy G. MacKinnon and Avanell Tuttle</b>	Jean Giles Memorial Endowment for Women and Children Living in Poverty	Wendy Baker	Euan Carmichael	Eldorado Gold Corporation
Afton Cayford	Megan Sam	June Murdoch	The Charles and Adeliene Hill Endowment Fund	Alan Ballard	Evelyn Carroll	Anne Elliott
<b>In honour of River Shannon</b>	<b>In honour of Toby Wu</b>	<b>In memory of Dorothy G. MacKinnon</b>	Dan Hill Memorial Endowment for Women and Children Living in Poverty	Carel and Dick Ballard	Diana Carter	Carolyn Ellison
Vanessa Morgan	Jia Lin (Tina) Lu	June Murdoch	Mary C. Jordan Endowment for Economic Independence	Banner Carpets Ltd.	Lesley Castonguay	Endeavor Silver Corp.
<b>In honour of Madeleine Shaw</b>	<b>In honour of Rio Yassin, Teo Yassin, Zeo Yassin and the Y. boys</b>	<b>In memory of Judy Martin</b>	North Growth Foundation Endowment Fund	Jessica Banning	Afton Cayford	Equinox Gold Corp.
Bonnie Foley-Wong	Zora Huculak	Luanne Sinnamon	Anonymous	Shiela Barkey	Cenovus	Maret Erickson
<b>In honour of Lori Shewan</b>	<b>In honour of York House School</b>	<b>In memory of Mary Miller</b>	<b>Named Funds</b>	Patricia Barnes	Jason Chabot	Ero Copper Corp.
Lisa Posmituk	Christy Thomas	Sheilah Morgan	Janet Austin Advocacy and Public Education Fund	Marvin Bartell	David Chambers	Karimah Es-Sabar
<b>In honour of Billie Sinclair</b>	<b>In memory of Kay Alsop</b>	<b>In memory of Jennie Morson</b>	Boivie Family Fund	Brenda Barton	Angelina Chan	Catherine Evans
UpMedia Inc	David and Dorothy Alsop	Miranda Sam	Kitty Heller Independence Fund	Jeannine Bartz	Priscilla Chan	Ex Sectors
<b>In honour of Chad Sloane, Jack Sloane, Samuel Sloan and the Sloane Family</b>	Brigitte Behrich	<b>In memory of Otello Nocente</b>	Kay Nineties Fund for YWCA Single Mothers' Support Services	Jada Basi	Peggy Chen	Arlene Fair
Tess Sloane	Patricia Chipman	Daniel and Pauline Nocente	Marnie Marley FASD Fund	Meera Bawa	Anita Cheng	Peter Fairey
<b>In honour of Carlotta Smith and Esme Smith</b>	First Church of Christ Scientist West Vancouver	<b>In memory of Manki Ben Patel</b>	<b>YWCA Friendship Circle</b>	John Baxter	Jane Cherry	Maureen Fairhurst
Ruby Smith	Henry Francheville	Arti Patel	( <b>\$100-\$499</b> )	Dr. Susan Baxter	Shelley Chin	Marzia Favaro
<b>In honour of Chad P. Soldan</b>	<b>In memory of Anita I. Armstrong</b>	Anonymous	Frank and Phyllis Abbott	Joshua Beach	Patricia Chipman	Michael Feist
Adrienne Davis	The Dowdle & Gauthier Families	<b>In memory of Magdalena Szilagyi</b>	AbCellera Biologics Inc	Bear Creek Mining Corporation	Jean Chose	Urs Fellmann
<b>In honour of Iris Sorbo</b>	Katarina Gabrilo	Jonathan Lehrer	Alisha Adams	Gillian Beattie	Brenda Chow	Betty-Anne Fenwick
David Wong	Tanya, Dave, Zoe, & Madison Itter	<b>In memory of Grace Tee</b>	Anita Adams	Rose Beatty	Guy Christie	Lorraine Ferreira
<b>In honour of South D. Mamas</b>	Arden Sutherland	Katarina Gabrilo	Robert and Shelly Adderley	Antonia Beck	Patricia Chu	Katelynn Fetterly
Kristina Bingham	<b>In memory of Marion Blough</b>	Sandra and Bruce Kornelsen	Galan Akin	Sheila Begg	Denise Clark	Lynn Field
<b>In honour of Melissa Spencer</b>	Paul F. Joseph	Stephan Krieger	Tiffany Alexander	J Bejar	Danielle Clarke	Finch Media
Amy M. Spencer	<b>In memory of Janene K. Coyle</b>	Diana Lilburn	Farida Ali	Carmen Bennett	William and Janis Clarke	Diane Finegood
<b>In honour of Arden Sutherland</b>	<b>In memory of Dale Embree</b>	Joan C. McCarter Foundation, held at Victoria Foundation	Jacqueline Allan	Dr. Duriell Bernard Chiropractic & Healthcare Services Inc.	Thomas Claypool	First Majestic Silver Corp.
Moirra McConnell	Anonymous	Moirra McConnell	Amney Amery	Dr. Victoria Bernstein	Marie-Josée Cloutier	Sylvia Fitzgerald
<b>In honour of Marjah Tajibnapis</b>	<b>In memory of Ruth Embree</b>	Manjit Malli	Armin Amrolia	Mebrat Beyene	Coeur Mining Ltd.	Elizabeth Fleming
Emily Copp	Valerie Embree	Karen Newell	Seema Amwan	Kristina Bingham	Moirra and Bill Colbourne	Alana Flexman
<b>In honour of Dorothy Thornton</b>	<b>In memory of Ernestine Fronc</b>	Kathryn and Gordon Newman	Analog Design	Emily Binks	Michele Coleman	Joshua Folk
Walter Thornton	Kim Fronc	Cathy Strashok	Bridgitte Anderson	June V. Binns	Denise Clark	Lynn Field
<b>In honour of Thunderbird Entertainment Inc.</b>	<b>In memory of Adam Hobson</b>	Arden Sutherland	Matthew Anderson	Cathy Binstead	Danielle Clarke	Finch Media
Finch Media	Galan Akin	2 Anonymous Donors	Jennifer Andres	Randy Bock	William and Janis Clarke	Diane Finegood
<b>In honour of Mabel Torok, Senan Torok and Zachary Torok</b>	<b>In memory of Betty Hutton</b>	<b>In memory of Doris Wong</b>		Alaya Boisvert	Thomas Claypool	First Majestic Silver Corp.
Cassandra Torok	Jane Hutton	Wilson Wong		Chris Bolton	Marie-Josée Cloutier	Sylvia Fitzgerald
		Wing Hang Henry Wong		Susan Borax	Coeur Mining Ltd.	Elizabeth Fleming
				Ingrid Bos	Moirra and Bill Colbourne	Alana Flexman
				Shannon Bosa	Michele Coleman	Joshua Folk
				Carmine Boskovich	Denise Clark	Lynn Field
				Christina Boskovich	Danielle Clarke	Finch Media
				Gina Bourne	William and Janis Clarke	Diane Finegood
				Jim and Mary Clare Bovard	Thomas Claypool	First Majestic Silver Corp.
				Lance Bowerbank	Marie-Josée Cloutier	Sylvia Fitzgerald
				Susan Boyd	Coeur Mining Ltd.	Elizabeth Fleming
				Kate Marion Boyle	Moirra and Bill Colbourne	Alana Flexman
				Audrey Bragagnolo	Michele Coleman	Joshua Folk
				Anita Braha	Clara Coles	Nancy Ford
				Beth Breisnes	Linda Joan Collins	Karen and Edwin Foss
				Rita Brown	Katie Comley	Angela Francis
					Hannah Cooper	Monique Franczak
					Emily Copp	Bart Fransen
					Alexis Crabtree	Kim Frezell
					Andrew Creighton	Dr. Margaret Fryer
					Marjo Croin	Carina Fu
					Patricia Cummings	Otaff Fyith
					Jitomir da Silva	Katarina Gabrilo
					Barbara Dale	Gap Inc.
					Jayana Darras	Agnes Garaba
					Jill Davidson	Linda Garden
					Carolyn Davies	Sharon Gardiner
					Adrienne Davis	Gatos Silver Inc.
					Patrick Davis	Jennifer and Christopher Gaze
					Stephanie Dawe	Sarah Gaze
					Lynne De Cew	Karen Gelmon
					John and Gayla DeHart	Kate Gerson
					Jane Delamere	Carolyn Gilbert

Theoni Gill	Margaret Huber	LaLa's	Manjit Malli	Erin O'Melinn	Joseph Rosen	Sunblest Commodities Inc.
Cynthia Girling	Anita Huberman	Steve Lake	Rosemary Mallory	One45 Software Inc.	Adrienne Ross	Margaret Sutcliffe
Gold Royalty Corp.	Mary Hudson	Leon Lalsingh	Sandra Maduke	D. O'Neill	Pat Ross	Sara Swenson
Gold Standard Ventures Corp.	Megan Hughes	Louisa Lam and David Ng	John Mancini	Alison Orr	Gordon Rumohr	Gwynfor Symmons
Goldman Investments Ltd	Susan Hughes	Jean Latham	Melanie Marchand	Jean Orr	Lisa Rupert	Elizabeth Wreford Tait
The Goodwin Family, in memory of Millicent G. Fleming	Tammy Hui	Alana Lawrence	Keith Martin	Christine Ou	SSR Mining Inc.	David Takagawa
Carol Gordon	Gurdip Hulait	Francine LeBlanc	Anisa Marynowski	Rebecca Ouwehand	Shaw Sabey & Associates Ltd.	Michelle Tang
Sarah Gordon	Sandra Hunt Chomyn	Amy Lee	Sam Massooleh	Alison Owens	Sabina Gold & Silver Corporation	Morgan Tanner
Colleen Grace	Hunter Dickinson Inc.	Angie Lee	Nancy Matheson	PG Wilcox MD FRCPC Inc.	Zulie Sachedina	Sigrd Tarrampi
Sherrill Grace	Marietta Hurst	Joanne Lee and Desmond Chew	Yuki Matsuno	Pacific Dermaesthetics	Roohi Sahajpal	Diana Tchakalian
Melanie Graham	Galen Hutcheson	Samantha Lee	Sharon Matthews	Kristin Padilla	Salesforce.com Foundation	Julia Tennant
Neda Grant	Lesley Hutton	Nicole Legault	Andrew Mayer	Anita Palepu	Ashley Palmer	Penelope Tham
Joan Gray	Tien Huynh	Joshua Lenon	Adam Alexander Melanson	Robyn Palmer	Pat Sam	Theatre Replacement Society
Kathy Greenberg	Illuminated Strategies	Patrick Lermitte	Danielle Melia	Pan American Silver Corp.	Kassie Sambaraju	Elaine Thiel
Marie-Therese Grenier	Patrice Impey	Gina Leslie	Tricia Meneghello	Alison Parry	Dawn Sandberg	Christy Thomas
Linda Gronert	Philip Ireland	Lisa Leung	Christina Meng	Arti Patel	Baljit Sandher	Walter Thornton
Dominique Gross	Tanya, Dave, Zoe, & Madison Itter	Paul Leung	Barbara Mennie	Alex Patton	Sandstorm Gold Royalties	Linda Tinker
Lorraine Grout	Susan Jackson	Wilma Leung	Dylan Merrick	Michelle Paulin	Anton Scamvougeras	Titan Mining Corp.
Pamella and Christopher Grover	Roumina Jamal	Jack Liao	Catherine Mezei	Michelle Paulin	Marina Scattolin	Patricia Tolmie
Joanne Gum	Laura Jamieson	Miu Fong (Jannique) Lim	Mike Bike	Ardath Paxton Mann	Barb Schimnowsky	Cassandra Torok
Penny Gurstein	Debbie Jang	Raphael Lim	Mile2Marathon	Margery Pazdor	Jesse Schmidt	Megan Tory
Wendi Gustavson	Angela Jasper	Calvin Lindberg	Alastair and Annette Miller	Charles Pearson	Jill Schroder and Michael Reynolds	Ginger Toth
Markus and Hanna Haapasalo	Charlene Jenkins	Anita Lindsay	Charlotte Miller	Jill Pennefather	Susan Scott	Lisa Tsiandoulas
Kirsten Hagemoen	David and Marilyn Jenks	Barbara Lindsay	Eleanor Miller	Teresa Perri	Danielle Segal	Lisa Tuer
Kathy and Stanley Hamilton	The Jennings Family	Anne Lippert	Arthur Mills	Roberta Perrin	Sharon Selby	Gina Tupper
Sarah Hamilton	Xiao Hua Jiang	Justin Liu	Debbie Mills	Elaine Perry	Nicole Senger Maas	Chinwe Umenyi
Lyndsey Hannigan	Xiao Hua Jiang	Justin Liu	Patricia D. Mills	Sheryl Peters	Sara Sethna	Naomi Unrau-Sortwell
Helen Hansen	Sharon and Kenneth Johns	William Longstaff	Marnie Mitchell	Matiya Petersen	Armita Seyedalikhani	Lisa Upton
Mary and Ernest Harder	Denise Johnson	Elynn Lorimer	Sheena Mitchell	Janet Phelps	Ginger Shaw	Singleton Urquhart Reynolds Vogel LLP
Jan Hare	Sharon Johnson	Danielle Lovell	Wendy Mould	Christine Phillips	Philippa Shepherd	James Vercammen
Barb Harris	Gladys and Allan Johnston	Lucara Diamond Corp.	Andrew and Susan Molloy	Christine Pilkington	Amanda Sheppard	Marianne Vidler
John Harris	Christine Jones	Lundin Gold Inc.	Peter and Patty Molnar	Bruce and Gwen Piper	Karen Shuster	Judy Villeneuve
Brenda Harrison	Jane Jones	Patricia-Jean Lynd	Margaret Monck	Dr. Erika Plettner	Silvercorp Metals Inc.	Tyler Volker
Sandra Hartney	Linda Jones	Andrew Lynn	Alison Moore	I Poh	Nicole Silvestre	Michelle Vucko
Noreen Hautala	Donna Jordan	Marilyn MacCrimmon	Janet Moore	Shelley Poitras	Nathalie Sinclair	Christine Vukusic
Susan Hawk	Marella Joseph	Carole MacFarlane	Janice Morris	Greg Poole	Vashti Singh	Louis Wadsworth
Julia Hedley	Darlene Juschka	Sarah MacKinnon	Brenda Morrison	Tak Poon	Maria Siy	Julie Walchli
Debbie Heffel	Jelisia Kamel	Sheila MacMahon	Nancy Morison	Edoye Porbeni	Amanda Skoll	Joni Walker
Lena Heidt	Ran Kang	Joan MacNab	Cathie Moroney	Christopher Porter	Tess Sloane	Joan Wallace
Donna and Werner Heinrich	Alison Keller	Rita McAllen	Kyle Morton	Deborah Power	Laura Sly	Mary Wallis
Connie and Gary Hendren	Kathleen Kennedy-Strath	James McCawley	Mouhamad Mouhamadoussene	Premium Brands Holdings Corp.	SmartSweets	Dan Wang
Daniel Hendrickson	Sheila and Hamish Kerr	Catherine McCreary	Jennifer Moule	Barb and John Preston	Shirley Smiley	Katrina Wang
Adrien Herbets	Janet Kidd	Pamela and Cecil McCullough	Marguerite Mousseau	Pretium Resources Inc.	Robin Smillie	Keith and Miriam Ward
Kim Heron	Allison Killam	Joyce McCusker	Margaret Mubanda	Rola Priatel	Alan Smith	Patricia Ward
Cecil and Ruth Hershler	Kirk & Co. Consulting Ltd.	Vickie and Neil McDonnell	Jennifer Munro and Blair Russel	Christina Price	Esme Smith	Bridget Warner
Judi Hess	Patricia Kirkham	Lisa McDougall	Teddy Nafrey	Wilma Pryma	Hannah Smith	Charlotte Warren
Gregory Heywood	Emily Kirkpatrick	Mary and Dan McDougall	Roberta Neault	QPI Development Group Inc.	Heather Smith	Mark Waslen
Mel Hiebert	Andromeda Klein	Kathy McEachern	Carolyn Neilson and Christopher Frigon	Louise and Robert Quart	Julia Smith	Janet Waterman
Melissa Higgs	Mary Ann Kmetic	Mary and Paul McGivern	Linda Netherton	Dolores Racine	Karin and Stan Smith	Breanne Watson
Andrea Hill	Joslin Kobylka	Lauren McHoul	New Pacific Metals Corp.	Gregg Rafter	Michelle Smith	Karin Watson
Nicola Hill	Myrna Koffman	Sharon McIntee Birrell	William New	Marion Ralston	Moira Smyth	Wheaton Precious Metals Corp.
Kate Hinnegan	Laura Kohli	Dana McIvor	Patricia McKendrick	Danielle Rana	Snore MD	Wendy and Orrin Webber
Jennifer Hitti	Ant Kong	Elizabeth McKeown	Elizabeth McKeown	Deanna Randall	Cynthia Soboren	Jane and Gerry Weiler
Penelope Ho	Marilyn and Robert Krell	Andrea Mclean	Gail Newell	Nancy Ranger	Dianne Sparrow	Anita Welke
Ana-Maria Hobrough	Chantelle Krish and Tilman Holschuh	Cynthia McLean	Nexgen Energy Ltd.	Tammy Rea	Peter and Daphne Spencer	Judy Wellington and Don Wadella
Shea Hocaloski	Lara Kroeker and Loc Dao	Amber McLennan and Peter Muench	Nexii Building Solutions Inc.	Samuel Reed	Kailey Spooner	Vanessa Wellington and John Clark
Warren Hoole	Natasha Krotez and Charlene Menezes	Margaret McNeil	Kayee Ng	Cindy Reeves	Lynne Stanger	Eleanore Wellwood
Hotson Architecture Inc.	Shea Hocaloski	Margaret McNeil	Eric Nicholson	Michelle Reid	Janice Stasiuk	Theresa and Garry Weltzin
Wallace Houston	Denise Kuno	Kerry McPhedran	Stephen Nicoll	Caitlin Roberts	Heather Stephenson	Mariann Westerlund
Kenneth Howe	Patricia Kurkiewicz	Mindy and Ken McPherson	CJ Noel	Linda Roberts	Diane and Alan Stewart	Lynn & Bill Weymark
Chieh Huang	Leora Kuttner	Katja Macura	Julia Nyberg and Alexander Moss	Martin Roberts	Jamie Stewart	Laureen Whyte
Ivy Hubbard	Amanda Kwan	MAG Silver Corp.	Aimee O'Donnell	The Robinson Family	Joan Stewart	Christin Wiedemann
	Anna Kwok	Christie Mahovich-Little	Gabriela Olavar	Pat Rose	Lynn Stewart	
	Michelle Kwok	Colleen Malatest			Mary Stott	

Lindsay Wilde and Eli Sopow

June Williams

Shelley Williams

Jocelyn and John Willis

Jennifer Wilson

Kory Wilson

Lisa Wilson

Witness the Fitness

Irwin Wong-Sing

Robyn Woodward

Michelle Wu

Victoria Yang

Sherry Yano

Lisa Yeates

Rene Yeung

Howard Young

Rhona Young

Jean Yuen

Zulfiya Yunusova

Peter Zandstra

Zaui Software LTD.

66 Anonymous Donors

Youth Leadership Society of BC

### 3rd-Party Events

Absolute Software - Wine Survivor

BCMEA – Simplify the Season

Nancy Morrison

Amanda Ross – Strive Fundraiser

Shoppers Drug Mart

Whiffin & Wilson and the Neacsu Denner Group

### In Kind Donors

AG Hair

Aritzia

Arraei Collective

Ava, Lola, Shoshana and York House Senior School Students

Sabreen Bains

Carel and Dick Ballard

BC Liquor Distribution Branch

Best Buy Canada Ltd.

Boffo Properties

Bosa Family Foundation

Brand & Iron

Buddhist Compassion Relief Tzu-Chi Foundation of Canada

Canadian Health Food Association

Canadian Tire

Canadian Tire Foundation for Families

Cause We Care Foundation

Joy Chen

City Dream Centre

Coho Commissary

Community Food Centres Canada

Crofton House School for Girls

Cultivate Canada Society

Eagles Nest Preschool

Engel & Völkers - Vancouver team

FreshPoint

Bianca Fusco Zanatta

Grant Thornton LLP

Erin Grzybowski

Braden Haggerty

Farzana Harji

Angela Hu

Indo-Africa Charitable Society

Ismaili Council For BC

Kitsilano Neighbourhood House

Koo and Kavanagh Family

Daniel Law

Lush Handmade Cosmetics Ltd.

Luvo Inc.

Lyft Canada

Phoebe Mah

Chris McBeath

Cheryl Melder

Methanex Corporation

Microsoft Pacific Centre

Renate Mueller

Murchie's Tea & Coffee Ltd.

National Bank Private Banking 1859

Natural Source

Sarah Newton

O.K. Gift Shop

Ono Creatives

Patisserie Lebeau

Peace Arch Elementary

Michelle Porter

Sean Powell

Raiz Holistic Nutrition

Regal Ideas Inc.

Rethink Communications Inc.

Shaughnessy Elementary School Families

Skretting

Skull Skates

Smiling Eyes Project

Sole Food Street Farms

Damian Stathoniros

Jan Stimpson

Strathcona Health Society

Sharon Street

Bunjie Stronge

Roberta Stuart

TELUS

The Shoebox Project

Sharon and Warren Towler

Tru Earth Environmental Products Inc.

Twist Fashions Inc.

Two Wheel Gear

Lynne Tyler

Uber

United Way Lower Mainland - Period Promise

Vancouver Fire & Rescue Services

Vancouver Food Runners

Vancouver Fruit Tree

Vancouver Opera Association

Vancouver Police

Department

Vancouver Rape Relief & Women's Shelter

Vancouver Soup Company

Vega

Ventana Construction Corporation

Virgin River Productions

Watari Counselling and Support Services

Samantha Whiffin

Jade White

Tiffany Wilson

Youth Leadership Society of BC

### 2020 Women of Distinction Awards

#### Presenting Sponsor

Scotiabank

#### Legacy Sponsors

BCAA

BC Housing

Clio

iA Financial Group

MDA

Nature's Path

Pacific Blue Cross

Reciprocal Consulting

SAP

UBC Sauder School of Business

#### Tribute Sponsor

Absolute Software

#### Patron Sponsors

Brand & Iron - Old Joy Gift boxes

CN

Imagine That Events

Say Love Projects

Showkraft

Uber Eats

#### Media Sponsors

Global BC

Global News Radio 980 CKNW

Miss604



# SUPPORT OUR WORK

## DONATE

Your gift ensures that families across Metro Vancouver get the resources they need to build community, gain financial stability and move toward their goals.  
[ywcavan.org/donate](http://ywcavan.org/donate)



## JOIN

YWCA Health + Fitness offers two modern, co-ed fitness facilities in downtown Vancouver. Revenues support programs for local women and families.  
[ywcavan.org/fitness](http://ywcavan.org/fitness)



## VOLUNTEER

Give back by mentoring, lending your skills and more. Our website features opportunities for individuals and groups.  
[ywcavan.org/volunteer](http://ywcavan.org/volunteer)



## STAY

The YWCA Hotel provides affordable accommodations for local and international travelers, while generating funds that support local families.  
[ywcavan.org/hotel](http://ywcavan.org/hotel)



YWCA Metro Vancouver  
535 Hornby Street  
Vancouver, BC V6C 2E8

tel 604 895 5850  
fax 604 684 9171  
[donations@ywcavan.org](mailto:donations@ywcavan.org)  
[ywcavan.org](http://ywcavan.org)

