

2021 ANNUAL REPORT





OUR VISION

We boldly envision a just and equitable world for women, families and allies.

OUR MISSION

We advance gender equity alongside women, families, Two-Spirit and gender diverse people through advocacy and integrated services that help support personal, collective and economic wellbeing.

2021 - 2022 BOARD OF DIRECTORS

Chair: Valerie Mann

Vice-Chair: Lawrie Ferguson

Treasurer: Cathy Imrie

Secretary: Marilyn Mauritz

Board Members:

Paulina Cameron

Rosalind Campbell

Lisa Coltart

Roopa Davé

Elayna Diemert

Morna Sileika

Dianne Sparrow

Diane Sullivan

MESSAGE FROM THE BOARD CHAIR AND INTERIM CEO

This past year has been one of both growth and reflection. While still dealing with the continuing challenges of the global pandemic, the YWCA completed 2021 stronger, more resilient and more focused on our key priorities as we completed the third year of our 2019-2022 strategic plan including the addition of new housing and employment programs.

In response to the seismic shifts in awareness of, and demands for, equity, diversity, inclusion and reconciliation, we have reaffirmed our commitment to walk the talk. Throughout 2021, we engaged staff and stakeholders to examine and re-set our Vision and Mission statements. We firmly believe that the updated versions of our Vision and Mission better capture the heart of our work and our hope for a just and equitable future.

This commitment is deepening our work for employees and program participants. In 2021, we surveyed YWCA staff and community members

to better understand their experiences with the organization and how we can build on our existing work to promote equity, diversity and inclusion. Staff committees on truth and reconciliation, gender inclusion and racial equity advised on strategy, shared information and organized training and events. Each of these committees was actively involved in the development of the updated Vision and Mission.

To engage the public and policy makers to create systemic change, we focused significant energy on advocacy over this past year. To raise awareness about gender-based violence, we unveiled the Wall for Women, an interactive 42-foot-high mural painted by renowned artist, Ola Volo. We worked with Rethink Communications to create this first-of-its kind artwork and are so proud that it won multiple awards, including first place in the Top Cause category at the Canadian Marketing Association Awards.

YWCA staff



Another exciting advocacy initiative that got underway is YWCA City Shift. This three-year project, with funding provided by Women and Gender Equality (WAGE) Canada, aims to improve the prosperity, security and participation of diverse women and girls by recommending increased use of Gender-Based Analysis Plus (GBA+) in municipal policy and processes.

We continued to spotlight the local housing crisis and focus on building more homes for women and families. Last year, we officially opened YWCA xʷl̓əpícən in Vancouver and YWCA May Brown Place in North Vancouver, creating 46 new safe and affordable homes for single mothers and their children. We completed a capital campaign for housing in Richmond that recently opened, and began a capital campaign for a new housing community in Burnaby. These projects take an incredible amount of coordinated effort with developers, funders, municipalities and community supporters and the resulting homes for women and children will have long-term impacts for generations to come.

Despite the challenges of the pandemic, we finished 2021 in an impressive position. Guests and members returned to the YWCA Hotel

and YWCA Health + Fitness Centre and our incredible staff continues to show up with dedication and care in all departments. We spent the latter part of 2021 and the first months of 2022 engaged in a CEO search and we are very pleased to have recently announced Erin Seeley as our new CEO to lead this incredible team into an exciting new chapter for YWCA Metro Vancouver.

Looking ahead, in 2022 we celebrate 125 years of YWCA Metro Vancouver's service to the community. What started with a humble building in a very different downtown Vancouver has grown into a multi-tiered, multi-location, non-profit social enterprise that reaches more than 45,000 people each year with specialized and effective programs and services. Our YWCA is an organization like no other. We are so proud of the work that we do, and are excited about the opportunities to do so much more to bring about positive and lasting change in the communities we serve.

To our committed community of donors, volunteers, participants and supporters, you fuel our passion every day. Thank you for supporting us in this journey toward a brighter future.



Valerie Mann,
Board Chair



Michelle Sing,
Interim CEO

2021 YEAR IN REVIEW

In 2021, donors like you helped support **73** programs in **178** locations* in Metro Vancouver.

** In person and virtually*

YWCA Hotel guests and YWCA Health + Fitness members returned to our facilities, and program participants began to meet in person again to grow, heal and connect.

In 2021, we:

Opened **2** new housing communities, providing **46** new homes for single mother-led families.



Unveiled the interactive Wall for Women mural to bring awareness to gender-based violence.



Introduced the **FASD Dictionary**, a first-of-its-kind online resource to educate people about Fetal Alcohol Spectrum Disorder.

Launched **7** new employment programs, serving:

- Immigrant women who have experienced domestic violence
- Women involved with the justice system
- Women entering trades
- Young entrepreneurs looking to launch their own start-ups
- Youth interested in working in pet care
- Job seekers who are experiencing depression or anxiety
- Those who have been unable to sustain employment

CITY SHIFT

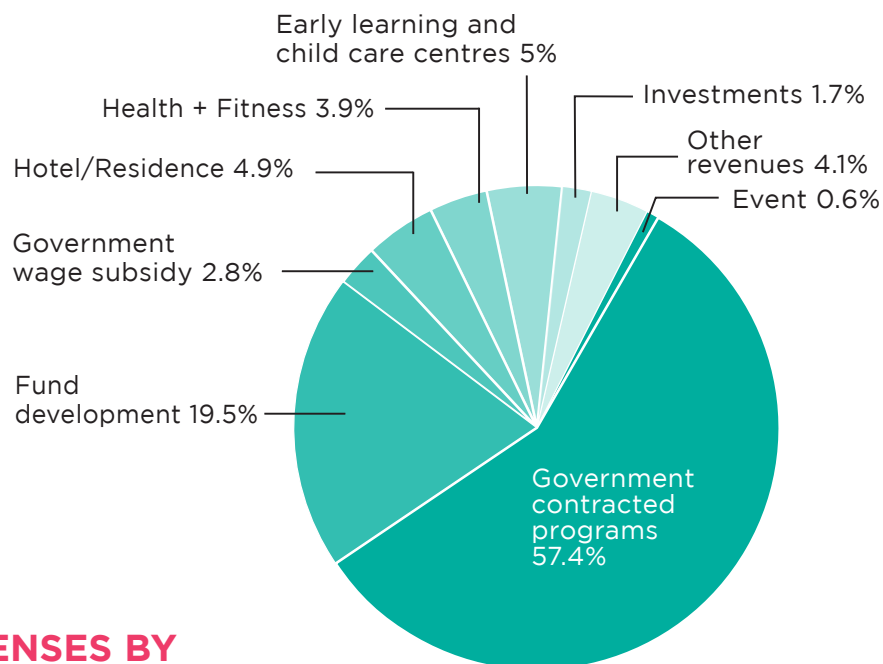
Launched **YWCA City Shift** to improve the prosperity, security and participation of diverse women and girls by engaging municipalities to adopt and implement Gender-Based Analysis Plus (GBA+) in policy and processes.

Offered **6** workshops to staff on Truth and Reconciliation and **3** workshops on Racial and Gender Equity. **90%** of YWCA staff are trained in the Truth and Reconciliation workshop provided by Reciprocal Consulting.

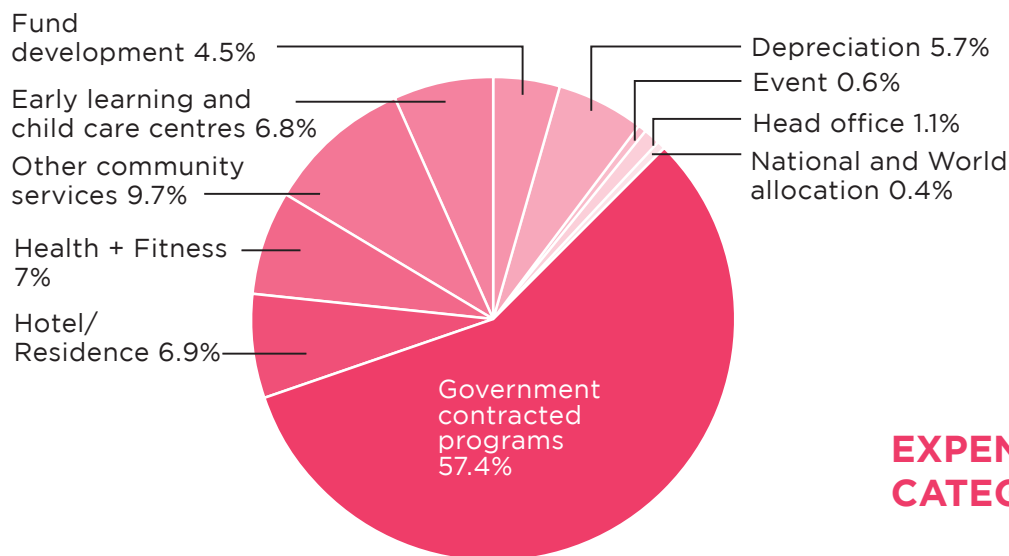


2021 FINANCIAL HIGHLIGHTS

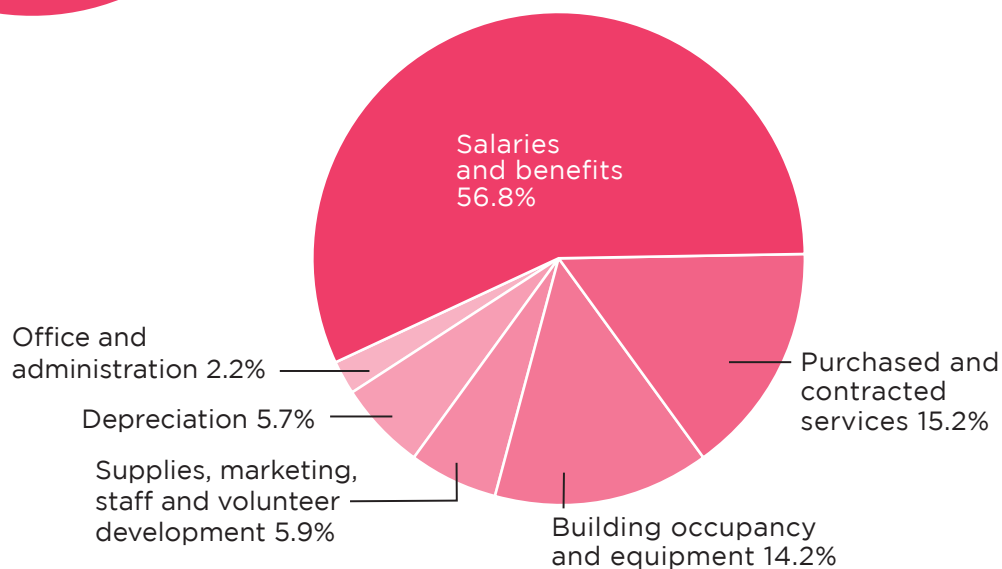
REVENUES



EXPENSES BY PROGRAM AREA



EXPENSES BY CATEGORY



BALANCE SHEET

As of December 31, 2021
(In \$000)

ASSETS

Cash and cash equivalents	16,899
Short-term investments	446
Accounts receivable	2,603
Inventory and prepaids	551
Total Current Assets	20,499

Restricted investments	4,063
Long-term investments	5,797
Property and equipment	59,639
Total Assets	89,998

LIABILITIES AND FUND BALANCES

Accounts payable and accrued liabilities	3,387
Deferred revenue	3,804
Demand loan payable	4,865
Current portion of capital lease payable	11
Current portion of mortgage payable	233
Total Current Liabilities	12,300

Capital lease payable	4
Mortgage payable	4,061
Total Liabilities	16,365

Fund Balances allocated to:

Unrestricted	518
BC Housing Replacement Reserve	1,281
Board Designated Endowment Fund	2,206
Board Designated Capital Repair and Replacement Fund	7,178
Donor Designated Endowment Funds	2,781
Board Designated Legacy Fund	589
Board Designated Sustainability Fund	689
Board Designated Employment Program Fund	5,500
Board Designated COVID-19 Fund	3,450
Capital Fund	49,441
Total Fund Balances	73,633

Total Liabilities and Fund Balances	89,998
--	---------------

STATEMENT OF REVENUES AND EXPENSES

For the year ended December 31, 2021
(In \$000)

REVENUES

Government contracted programs	28,061
Fund development	9,549
Government wage subsidy	1,363
Hotel/Residence	2,412
Health + Fitness	1,915
Early learning and child care centres	2,459
Investment revenues	826
Other revenues	1,991
Women of Distinction Awards event	287
Total	48,863

Fund development revenue includes the following:

Donations	8,013
Government grants	1,077
Fund development appeals in other programs	209
Gaming	250
Total	9,549

EXPENSES BY PROGRAM AREA*

*Expenses by program area include allocations from head office of common administrative and support costs.

Government contracted programs	22,673
Hotel/Residence	2,738
Health + Fitness	2,763
Other community services	3,821
Early learning and child care centres	2,691
Fund development	1,795
Depreciation	2,255
Women of Distinction Awards event	231
Head office	419
National and World allocation	146
Total	39,532

The excess of revenues over expenses is a result of a multi-year provincial contract and funds designated for capital projects.

A copy of the 2021 audited financial statements is available upon request.

STRONG START FOR CHILDREN

YWCA Metro Vancouver continues to advocate for inclusive, affordable and accessible universal child care.

We operate four early learning and child care centres, including **free short-term care for families in the Downtown Eastside** and **free care for children of teen mothers working to complete high school**.

434 children received quality care at YWCA child care centres, including **10** children of teen moms who were finishing high school.



SMART CHOICES FOR YOUTH

501 Grade 7 students participated in YWCA Guide to High School after-school program.

300 Grade 8-10 students took part in YWCA Dating Safe. They gained knowledge and skills to develop healthy relationships free from violence and abuse.



230 Grade 11 and 12 girls and gender-diverse youth were matched with professional mentors to gain leadership skills and explore career options through the YWCA High School Mentorship program.



35 self-identified Indigenous girls participated in the YWCA Circle of Sisters Indigenous Mentorship program.

BUILDING SKILLS AND ECONOMIC WELLBEING

879 job seekers received specialized employment support through **16** YWCA employment programs.

3,229 people accessed job search assistance through the YWCA's WorkBC Employment Services Centres.

PROGRAM HIGHLIGHT: RESTART

We partnered with Elizabeth Fry Society to provide a specialized employment program for women involved with the justice system. Funded by the Ministry of Advanced Education and Skills Training, Restart offered a safe, stigma-free environment to support participants to achieve their employment and education goals. **45** women participated in the program; some outcomes include:

- **14** participants secured employment (social services, retail, autobody and self-employment)
- **16** participants were accepted in educational programs (nursing, Indigenous justice, horticulture and agriculture, genealogy and others)
- **9** youth participants are focused on pursuing their Dogwood Diploma
- **5** participants secured volunteer positions



Restart helped me find myself during the darkest, most difficult times. I would never have rediscovered the professional I was or that I can become in the future, had I not been shown how much there is still out there... The safe, nurturing environment created by women facilitating and participating is almost healing to the soul!

- Maryna R. program alumna

Restart staff



MAKING AFFORDABLE HOUSING A REALITY



“

I'm so incredibly grateful to the YWCA for the opportunity to have a beautiful home for myself and my son, I can't ask for anything better. This is so important, especially for single moms.

- Elise, YWCA Housing resident

Last year, we opened **2** new housing communities to address the region's housing crisis. YWCA May Brown Place in North Vancouver is now home to **14** single mothers and children, and YWCA xʷłəpicən* in Vancouver provides **32** safe and affordable homes for single mothers and their children.

**The Musqueam Nation gifted us this very special name. xʷłəpicən means 'a hollow', reflecting the housing site's low-lying area under the Arbutus Ridge, and because a hollow is somewhere cozy for people to gather.*

894 single mothers and children made their home in one of **14** YWCA housing communities

NOURISHING THOSE IN NEED

30,496 meals were served
at YWCA Crabtree Corner
in the Downtown Eastside.



Our garden volunteers
logged in **700+** hours of work.



We offered **80 - 100** take-away meals
per day out of the community kitchen.
Local chefs and commissary kitchens
helped prepare meals alongside
Crabtree Corner's kitchen coordinator
and dedicated volunteers.

We continued to provide grocery
hampers and grocery gift cards for
individuals and families. Seniors from
the community began to return to the
lunch program.

The YWCA Rooftop Garden
yielded **1,550 pounds** of
produce for Crabtree Corner
and other YWCA programs.



SUPPORTING MOTHERS WHO ARE PARENTING ALONE

YWCA Single Mothers' Support Services bring mothers together to connect at weekly group meetings, and to build bonds, share resources and become role models and support for each other. Groups have resumed in person, supporting mothers to build connections.

“

Participating in the weekly Single Mom's group made me realize that I was not the only woman struggling with parenting, financial, emotional and other personal issues. Listening and sharing stories of challenges made me notice the resilience in each of these women - they all became heroes to me, which made me aware of my own inner power and potential to achieve my dreams.

- Clara, program participant

193 single mothers and **244** children took part in **16** YWCA Single Mothers' Support Groups, including two specialized support groups for single mothers of children with special needs.

SUPPORTING ACCESS TO JUSTICE

The Staff Lawyer works with women with low incomes, women without legal status in Canada, newcomer women, racialized women, Indigenous women and trans women. Last year, the YWCA Legal Education program achieved some of its strongest trial results in the program's history.

64 clients accessed our Staff Lawyer's services, including workshops, legal information and full legal representation in family law.



THANK YOU TO OUR 2021 DONORS

We have done our best to include everyone who made a contribution of \$100 or more between January 1 and December 31, 2021. We apologize for any errors or omissions. Please contact us at 604 895 5850 if we have made an error in your acknowledgement.

2022 marks 125 years of serving our community.



**NEXT
125**

The Next 125 is our fundraising and engagement campaign in recognition of our anniversary, driven by passionate individuals and families who are transforming their communities through donations of \$25,000 or more. We have raised an incredible \$13.6 million and would be honoured to welcome you to the campaign if you are interested. Our fundraising priority is our new YWCA Burnaby Grange Street capital campaign to build a 32-unit, five-storey housing community for single mothers and children. We have raised 37% of our \$11.8 million goal with \$7.4 million outstanding. **Consider joining The Next 125 by pledging your \$25,000 gift over five years. You can also donate in honour of our anniversary with a monthly gift of \$12.50 or \$125, or by joining as an Inner Circle member with a \$1,250 gift.** We are honoured to highlight the generosity of these dedicated supporters. **Campaign gifts received from individuals and families from August 2017 – March 2022. We sincerely regret any errors or omissions.*

The Next 125 Donors and Ambassadors

\$2,500,000+

Anonymous Donor

\$1,000,000 - \$2,499,000

Suzanne Bolton and
Jefferson Mooney

Summer Split Foundation,
held at Vancouver
Foundation

Anonymous Donor

\$500,000 - \$999,999

Mary C. Jordan Family

Moiz and Nadia Lalani
Family

Pacific Spirit Foundation

Valley Properties Ltd and
Rockcliffe Estates Ltd.

Anonymous Donor

\$250,000 - \$499,999

Cindy and Ryan Beedie

Kitty Heller Memorial
Fund, held at Vancouver
Foundation

In memory of Dr. Bik May
Wai Lam

North Family Foundation

Anonymous Donor

\$150,000 - \$249,999

Diamond Foundation

The Grayross Foundation,
held at Vancouver
Foundation

Jeri Krogseth and Krogseth
Family Foundation

Joanie McEwen and Irwin
Nathanson

Joan C. McCarter
Foundation, held at
Vancouver Foundation

Shewan Foundation

The Somerset Foundation

Ratana and Arran Stephens

The Stollery Charitable
Foundation

Dr. Ann Worth Charitable
Foundation

4 Anonymous Donors

\$100,000 - \$149,999

Megan Abbott

Armstrong Family
Foundation

Anne Dobbie and Dennis
Ewasituk

The Gardiner Family

The Houssian Foundation

Mirhady Family Fund, held
at Vancouver Foundation

Sylvia J. Ommanney

Karen Sander and Family

Sandy So

Dr. Kim van der Woerd and
Dr. Ron Roesch

Windsor Plywood
Foundation, held at
Vancouver Foundation

\$50,000 - \$99,999

Burnaby Fire Fighters
Charitable Society

Dilawri Group of Companies

John Fluevog Shoes

Diane Forsythe-Abbott
Luncheon

Lauren Gehlen and Jamie
Houssian

Anne Hale

Valerie Mann and John
Condon

Cynthia Miles and Paul
Balfour

Seedlings Foundation

The late Glenna Urbshadt
and Katie Trydal

Bev Wallace

Bruce and Lis Welch

Whittall Family Fund, held
at Vancouver Foundation

Garry Zlotnik

2 Anonymous Donors

\$25,000 - \$49,999

Shirley Barnett

Diana and Bruce Chan

Y.P. Heung Foundation

Peggy Ho Yuen

The Milan and Maureen
Ilich Foundation

Catherine Imrie

Koo Family

David & Dorothy Lam
Foundation

Lily Lee

Munford Family Foundation

Peterson

The Rajani Family

The Joseph Segal Family
Foundation

A Tribute to Grace Tee

The Wolrige Foundation

3 Anonymous Donors

THE NEXT 125 AMBASSADORS

Diana Chan

Diane Forsythe-Abbott

Lauren Gehlen

Ann Mortifee

Sandy So

Dr. Kim van der Woerd

Lis Welch

Cynnle Woodward



YWCA staff and volunteer

YWCA Leadership Circle

**VISIONARY
(\$50,000+ / 3 YEARS)**

Megan Abbott
Ames Family Foundation
Armstrong Family Foundation
BC Ministry of Advanced Education and Skills Training
BC Ministry of Children and Family Development
BC Ministry of Public Safety and Solicitor General
BC Ministry of Social Development and Poverty Reduction
Cindy and Ryan Beedie
Suzanne Bolton and Jefferson Mooney
Burnaby Fire Fighters Charitable Society
Canadian Women's Foundation
Canucks for Kids Fund
Cause We Care Foundation
Chan Sisters Chard Development Ltd. Foundation
City of Burnaby
City of North Vancouver
City of Vancouver
Computer for Success - Canada Incorporated
Diamond Foundation
Dilawri Group of Companies
Anne Dobbie and Dennis Ewasiuk
Employment and Social Development Canada
First West Foundation and the Envision Financial Community Endowment
FreshPoint
The Gardiner Family
Lauren Gehlen and Jamie Houssian
Gilmore Park United Church
Government of Canada - Canada Mortgage and Housing
Government of Canada - Reaching Home - Canada's Homelessness Strategy
Government of Canada - New Horizons for Seniors
The Grayross Foundation, held at Vancouver Foundation
Anne Hale
Kitty Heller Memorial Fund, held at Vancouver Foundation
The Hieros Foundation
The Houssian Foundation
Immigration, Refugees and Citizenship Canada
Mary C. Jordan Family
Jeri Krogseth and Krogseth Family Foundation
Moiz and Nadia Lalani Family
Joan C. McCarter Foundation, held at Victoria Foundation
Joanie McEwen and Irwin Nathanson
In memory of Dr. Bik May Wai Lam

Valerie Mann and John Condon
Mirhady Family Fund, held at Vancouver Foundation
North Family Foundation
Sylvia Ommannney
Pacific Spirit Foundation
The Province of British Columbia - BC Housing
Public Health Agency of Canada
RBC Foundation
Raven Foundation
Rethink Communications Inc.
Karen Sander and Family
Scotiabank
Seedlings Foundation
Shewan Foundation
Sandy So
The Somerset Foundation
Ratana and Arran Stephens
The Stollery Charitable Foundation
Streethome Foundation
Summer Split Foundation, held at Vancouver Foundation
TD Bank Group
TD Friends of the Environment Foundation
United Way British Columbia
The late Glenna Urbshadt and Katie Trydal
Valley Properties Ltd and Rockcliffe Estates Ltd.
Dr. Kim van der Woerd and Dr. Ron Roesch
Vancity
Vancouver Foundation
Bev Wallace
Bruce and Lis Welch
Whitall Family Fund, held at Vancouver Foundation
Windsor Plywood Foundation, held at Vancouver Foundation
Women and Gender Equality Canada
Dr. Ann Worth Charitable Foundation
Garry Zlotnik
7 Anonymous Donors
**CATALYST
(\$15,000-\$49,999/
3 YEARS)**
AVC Management Inc.
Accenture
Andrew Mahon Foundation
B2Gold Corp
BC Hydro
Shirley Barnett
Peter and Joanne Brown
Buchanan Programme and Alice Huang
Roberta Lando Beiser
Buddhist Compassion Relief Tzu-Chi Foundation of Canada
Diana and Bruce Chan
Chyzowski Charitable Foundation Inc
The Co-operators
Coast Capital Savings

Community Food Centres Canada
Caroline Dunn
Face the World Foundation
John Fluevog Shoes
Fluor Canada Ltd.
G&F Financial Group
Government of Canada's Emergency Community Support Fund, Coquitlam Foundation, Port Moody Foundation and Port Coquitlam Community Foundation
Government of Canada, administered by United Way British Columbia
GeoComply
Myron Golden Alter Ego Trust
Graham
Oriana Green
HSBC Bank Canada
Y.P. Heung Foundation
Steven Hill
Peggy Ho Yuen
iA Financial Group
The ILLAHIE Foundation
Catherine Imrie
Diane and Warren Johnson
Kaatza Foundation
Leona Kolla and Alfred Schultz
Koo Family
Edith Lando Charitable Foundation
The Lecky Foundation
Lily Lee
The Lobstick Foundation
McCarthy Tétrault Foundation
Fiona Macfarlane
Reay and Lynda Mackay Foundation
Cynthia Miles and Paul Balfour
Munford Family Foundation
Herma Neyndorff
Daniel Nocente and Pauline Nocente
Nordstrom
PNG Enterprise Foundation
The Pender Fund, held at Vancouver Foundation
Peterson
Port of Vancouver - Vancouver Fraser Port Authority
Provincial Employees Community Services Fund
Real Estate Board of Greater Vancouver - REALTORS Care
Andre and Brock Rowland Foundation
SPARC BC
Sage Foundation
The Joseph Segal Family Foundation
Don & Joan Stanley Fund at the Edmonton Community Foundation
Whitney and Mark Starkey
R&J Stern Family Foundation
Eileen B. Stewart Private Giving Fund, held at Nicola Wealth Private Giving Foundation

Surrey Homelessness and Housing Society
Sherry Tryssenaar
The UPS Foundation of Canada
University of British Columbia
Urban Impact
Verch Charitable Fund
Victory Square Technologies Inc.
The Amir and Yasmin Virani Family Foundation
Mischa Weisz Foundation
The Wolrige Foundation
9 Anonymous Donors

YWCA Inner Circle

**PLATINUM CIRCLE
(\$2,500-\$14,999)**

Adura Strategy Inc.
Agriculture and Agri-Food Canada
Anako Foundation
Art Rapture Holdings Inc.
Ascenta Foundation
The Honourable Janet Austin
AVC Management Inc.
BC Nurses' Union
Frank and Julie Barker
BentallGreenOak
Bovie Family Fund
Dale Bosa
June Bros
Art Vertlieb-Bev Briscoe Foundation
Deb Bryant
Betty J. (Elizabeth) Burrell and Richard Campbell
David Bustos
Canadian Community Service Association
Sherry Cavallin
Sylvia Chen and Family
Lisa Coltart
Duane Cromwell
Lillian and Ross Davidson Fund, held at Vancouver Foundation
Leslie Diamond
Elayna and Bruce Diemert
Mike Fadum & Associates Ltd.
JoAnne and Terry Fahr
Dallas and Sean Fahy
Fairbairn Foundation
Lawrie Ferguson
Charles and Lucile Flavelle Family Fund, held at Vancouver Foundation
Fograscher Family Fund, held at Nicola Wealth Private Giving Foundation
Judy Garner
Helen Gabel
Karen Gilmore
The Giustra Foundation
The Hamber Foundation
Health Sciences Association of BC
Hillberg & Berk
Hudson Pacific Properties

Impact Recruitment Ltd.
Paul F. Joseph
L&P Family Fund, held at Nicola Wealth Private Giving Foundation
Diana Lam
Alison Lawton
Ledcor Group & Employees
Barbara Lindsay
London Drugs
Bill Longman
David Lyall
Pauline and Murray McInnes
The McGrane-Pearson Endowment Fund
McWaters Endowment Fund
MakeWay
Claudette Martin
JoAn and Michel Maurer
Natalie Meixner
Sandra Menzer
Rita Morin and Brian Follett
Nancy Morrison
Dianne Newell
North Shore Community Foundation
Lindsay Perceval
Servane Phillips
Quan Family Fund, held at Vancouver Foundation
Randall Foundation
Al Roadburg Foundation
Brice Royer
Melanie Rupp
John Ryan
Carl Saunders
Suki Sekhon
Azad and Yasmin Shamji
Patricia and Ken Shields
Dean Shillington Charitable Foundation
Sikka Foundation
Strand
The Stewart Fund
Oggy Talic
Debra Tarigan and Stephen Gowan
Woon Ai and Victor Tsang
United Way TransLink Compass Pass Distribution
Vancouver Sun Raise a Reader Campaign
Clare Waters
Weyerhaeuser – Parallam Plant
Wheeler Family Foundation
withinUs Natural Health
Wilson Wong
5 Anonymous Donors
GOLD CIRCLE (\$1,700-\$2,499)
Airstream Heating & Air Conditioning
Deborah Armour
BC & Yukon Society of Transition Houses
Barb and Brian Bahry
Kamal Basra
Battered Women's Support Services

Steven Bruk
City of Surrey
Hugh and Sharon Cooper
Janice De Clerck
Nicola Donaldson
Fasken
Carol Givton
Stephen Hall
Paul Hamilton
Cal and Sandra Johnson
Julia and Hwa Yul Kim
Linda Loo
Albert J. McClean
Jeffrey McCord
Caroline McMahon
Thomas Martini
Diana L. Miles
Mary Lou Miles
Caroline North
Jean Orr
Teresa Perri
Kathleen Pomeroy
Judy Rogers
St George's Greek Orthodox Cathedral Ladies Philoptochos Society
Beverley Tamboline
TD Canada Trust Cloverdale Crossing
Union of BC Performers
Carla Villar & James Dunn
Carole Walkinshaw
Warren and Twyla Wall
Nicola Webb
Wiegand Memorial Foundation Inc.
Jane and Maurice Wong
Barbara Vanderburgh Law Corporation
Janet Wood
5 Anonymous Donors
**SILVER CIRCLE
(\$1,000-\$1,699)**
A & A Steel Enterprises
AVG Plumbing Inc.
Andrew Abramowich
Alixima Solutions Ltd.
Kim Allard
Anthem Properties Group Ltd.
Francesco Aquilini
Robert Atkinson
Reagan Attle and Chris Phillips
BC Council for Families
BGH Community Fund
Christina and Chris Bennett
David Berkowitz
Leslie and Peter Blake
Alexia Bloch
Muriel Ann Boltezar
Steven and Catherine Borritt
Susan Borthwick
Bosa Development
Jim Bosa
Anne Boyle
Doreen Braverman

James Brown
Jack Brownhill
CIBC Children's Foundation
Diana Bulley
Molly Chan
Charles Chang
Dr. Lloyd and Kay Chapman Charitable Foundation
Ashley Chester
Alice Chung, Alive Health Centre
Leslie G. Cliff and Mark P. Tindle
Patti Cockcroft
Shelley Crawford
Crofton House School for Girls
Bob Cross
Lorraine Cunningham
Lorraine Dansereau
Brett Davidson
Sharon deLisser
Barbara Devlin
Mary-Jo Dionne and Chad Bentley
DP World (Canada) Inc.
Amar Doman
East Side Games Inc.
East Van Panto
Cheryl Eckert
Margaret F. Edmonds
Anne Elliott
Engineers and Geoscientists BC
Don Enns
David Ferguson
First Church of Christ Scientist West Vancouver
Alana Flexman
Dean Fogarty
Marguerite Ford
Christie & David Garofalo Family Foundation
Karen Gelmon
Catherine Gibson and Geoffrey Pitman
Peter Gibson
Maryke Gilmore
James Gray
Raminder Grewal
Nina Hansen
Harrigan Rentals & Equipment Ltd.
Craig Hathaway
Adam Heath
Teresa Heung
Ian Hibbert
Dayna Holland
Sam Hooge
HootSuite Media, Inc.
Dr. Hilary and Patsy Hui
Tamara and Eric Hung
In Stitch Us
Invictus Accounting Group LLP
Richard Jaffray
Dr. Sandra Jenneson
Sharon Jeroski
Judith Joseph

Janice and Hank Ketcham	Stuyver's Bread	Cathy and Sandy Burpee	Joy Gaze	Michael McDonald	Lorelei Russell	YWCA Legacy Circle PLANNED GIFTS
Jason Kiselbach	Tam Family	Kathy Carpenter	Nadja Gehriger	Colleen L. Mcinnes	Neelam Sahota	
Patricia Laidley	Craig Taylor	Nikki Carvalho	Genoa Design International	Patricia McKendrick	Caroline Sanche	Ennas Abdussalam
Thomas Laing	Eduardo Tee	Shannon Cassidy	Anne Giardini	Mary and Roderick McNeil	Bobbi Sarai Tanguay	Susan Adams
Mila Lane	Theodore Tee	Christian Cavelti	John Gill	Patti MacAhonic	Chad Sayers	Judith Adelman
Sheryl Lee	Brad Telford	Ghislaine Chan	Sean Gill	Mary Macdonald	Carolyn Scholz	Puspa Affandi
Margaret Leong	TELUS	Martin Charlwood	Radina Giustra	Carole MacFarlane	Dawn Schooler	Sheila Allen
Chris Liberta	Michael Tham	Liz Chaston	Tanis Goldman	Betty-Ann and Keith MacInnes	Lorimer Shenher	Janet Ames
The Lions Gate Women's Probus	Byron Thom	Lokesh Chaudry	Colleen Grace	Martin MacLachlan	Rhonda Sherwood	Deborah Armour
Lohn Foundation	Denice Tokunaga	Melissa Cheevers and Dr. Jesse Chew	Cody Green	Andrew MacNeily	Shauna Shortt	David L. Arpin
Christine Loock	Brenda Ulmer	Anita Cheng	Lawrence Green	Charles Martineau	Leslie and Mark Shuparski	The Honourable Janet Austin
Tom Luketic	Vancouver Pacific Lions Club	Sandra Cheung	Marie-Therese Grenier	Carol Mayer	Ray Signorello	Denise Baker
Tracey Lundell	Michelle Vucko	Flavius Chisani	Deryl and Stephanie Griffith	Adam Alexander Melanson	Ken Sim and Teena Gupta Sim	Diane Baker
K. Allison MacDonald	Brooke N. Wade Charitable Foundation	Simon Chiu	Braden Haggerty	Victoria and John Mendes	Nathalie Sinclair	Fionna Bayley
Haley MacDougall	West Vancouver Community Foundation	Chrysalis	Kevin Halicki	Umberto Menghi	Michelle and Laurence Sing	Sheila Begg
Mike MacKay	West Vancouver Community Foundation	Patricia Chu	Bryan Hall	Michelle Merry	Luanne Sinnamon, in memory of Judy Martin	Alise Benner
Francesco Aquilini	Vivian White	David Chucko	Dr. Judith Hall, OC	Nicole Milani	Claudia Sjoberg	Suzanne Bolton
Moirra McConnell	Chip Wilson	Churchill International Property Corporation	Kathy and Stanley Hamilton	Jenny Miles	Philippa Smith	Susan Borthwick
Tracey L. McVicar	Susan Witter	Jeff T. Clark	Ken Hanna	Dr. Susan Mills	Patrick Soares	Anne Boyle
Don Madsen	David Wong	Bruce Colwill	Alexandra Harris	Yvonne Mitchell	Carole Anne Soong	Sally Bryant
Sheena and Samir Manji	Jason Wood	Dan Cordingley	Dana Lee Harris	Michael Mjanes	Jason Soprovich	Elizabeth J. Burrell
Marilyn Loewen Mauritz	Sue Yamamoto	Lisa Cowell	Kasey Harris	Kirsten Molstad	Spatial R&D	Aletha Buschman
Michael Klein Law Corporation	Todd Yuen	Carolyn and Robert Cross	Judi Hess	Money Coaches Canada	Kim Spencer-Nairn	Celia Campos
Microserve	14 Anonymous Donors	Crowe MacKay LLP	Nicola Hill	Patty Montpelier	Annabel St John	Betty J. Carter
Brad Miller	BRONZE CIRCLE (\$500-\$999)	Shawn Dahl	Andrew Hiscox	MJ Morris	Carrie St. Martin	Barb Cassack
Bo Mills	30 Minute Hit Ltd.	Grant Damery	Melinda Hockley	Chris Morrison	Joan Stewart	Pamela Chambers
Dak Molnar	Barbara and Martin Aidelbaum	Lotte and John Davis	Lois Hollstedt	Norah Morrow	Barbara Stobie	Diana Chan
Christian and Dan Morrison	Candice Alderson	Deloitte & Touche Inc.	Kimberley Horrocks	Marguerite Mousseau	Elsie & Oscar Stone Legacy Foundation	Dr. Hilda L. Ching
Debbie and Michael Nagle	Barbara and Michael Aldritt	Monica Deol	Gary Huebner	June Murdoch	Minda Suchan	Ann Coombs
Tasnim Nathoo	Anthony Alvaro	Erik and Chantal Devries	Gayle Hunter and Brian Moghadam	Sarah and Andrew Nathanson	Arden Sutherland	Lynda Cooper
Joanne Neufeld	John Anderson	Patrick Doiron	Jane Hutton	Jennifer Natland	Jim Szabo	Lynn Corrigan
Wendy Orvig	Caroline Andrewes	Louise Donovan	Tevia Jeffries	Terry Neill	Carla Tak	Shelley Crawford
David Osborne	Frank Anfield	Fiona Douglas-Crampton	Marni Johnson	Gail Newell	Ahmet Ulker	Duane Cromwel
Aster and the late Herb Osen	Suzanne and Olin Anton	Jason Dowdeswell	Alexia Jones	Ntirety, Inc.	Marg Van Wielingen	Janey Cruise
Janice O'Sullivan	Aplin Martin	Heather Duffy and Al Tebworth	Ruth Jones and Keith Robinson	Barbara Ogden and Ron Collicutt	Marianne Vidler	Janet David
Janet Pattinson	Valerie Arlette	Brodie Dunlop	Juliana Jiao Personal Real Estate Corporation	One World Learning	Olivier Vincent	Elaine Decker
David Pearson	Associated Environmental Consultants Inc.	Valerie Dunsterville	Amy Juschka and Kevin Hollett	John O'Neill	Greg Vriend	Anne Dobbie and Dennis Ewasiuk
David Prevost	Tony Astles	Lyndsey Dyer	Darlene Juschka	Karen Ong	Jennifer Wade	Kaitlyn Domijan
Tracy Proke and David Vogt	Catherine Backman	EGBC Women in Engineering and GeoScience	Vishav Jyoti Personal Real Estate Corporation	Pamela Oram	Mike Walker	Fiona Douglas-Crampton
Doug Pulver	David Bain	Ashley Elchuk	Angel Kao	Pacific Southshore Ventures Inc	Dan Wang	Heather Duffy
Moura Quayle	Adriana Balic	Bob Elton	Salim Karim	Lorne Palmer	Linda Welch	Jennifer Dusting
Sonya Reginato	Alan Ballard	Val Embree	Lynne Kent	Parker Family Fund	Judy Wellington and Don Wadella	Barbara-Anne Eddy
Pamela and Dave Richardson Family Fund	Stephanie Ballard	Emerson Real Estate Group	Scott Kerr	Alex Patton	Westminster Management Corporation	Jim Evans
Heather P. Riedl	Jessica Banning	Empress Lab	Theodore Kim	Charles Pearson	Westside Montessori Academy	JoAnne and Terry Fahr
Pearl Roberts	Marko Barisic	Mark Epp	Chantelle Krish and Tilman Holschuh	Brian and Theresa Pearson	Stephanie Weterings	Joanne G. Fairley
Luana Robertson	Joanne Barker	Alfonso Ergas	Nellie Lacusta	Walter Pela	Judi Whyte	Isobel Farrell
David Rowntree	Joan Beaty	Jim Evans	Brad Lamoureux	Jan Pezarro	Kaayla Wildor and Robert Wilds	Lucile Flavelle
Elizabeth Roy	Lori Becker	Susan Evans	Craig Langdon	Monique Poncelet	Lance Williams	Marguerite Ford
Tanis Rubini	Vince Beiser	Arthur Evrensel	Catherine Lanyon	Howard and Geri Prior	Jocelyn and John Willis	Joan Fowler
Laura and Richard Samaroo	Brenda Benham	Risa Fahy	Dianne Lapierre	Dr. Jerilynn Prior	Donna J. Wilson	Katarina Gabrilo
Suromitra Sanatani	Virginia Bird	Jena Fair	Anita and Ian Law	Sophia Pugh	Karen Wood	Joy Gaze
Jenny Sandy	Stacey Boothman	Megan Filmer	Jayne Le Vierge	Tony Quattrin	Heidi Worthington	Helen Gabel
Paul Sangha	Anita Braha	Diane Finegood	Joanne Lee and Desmond Chew	Blair Quinn	James Yang	Maia Gibb
David Schellenberg	Daphne Bramham	Roger Finnie	Kevin Lee	Peter Rackow	Peter & June Young Legacy Fund, held at Vancouver Foundation	Karen Gilmore
Jill Schroder and Michael Raynolds	Christine Brophy	Sylvia Fitzgerald	Nicole Lee	Vera Radyo	Jeffrey Zarin	Maryke Gilmore
Laurie Schultz	Barbara Brown	Carole Forsythe	Gina Leslie	Andrew Reid	Hendrik Zessel	Carol Givton
William Smart	Greg and Suzanne Brown	Richard Frampton	Kathy Lilyholm	Graeme Renton	Davide Zilioli	M J. Golden
Robin Smith	Naomi Brunemeyer	Bianca Fusco Zanatta and Marco Zanatta	Judith Lindsay	The Late Sandy Robertson	Ziva Dynamics	Colleen Grace
Timothy Smith	Cicely Bryce	Otaff Fyith	Harald & Sharlene Ludwig	Ms. Lenore Rosen and Dr. Joan Robillard	30 Anonymous Donors	Nichola Malim Hall
Monica Soprovich	BuildDirect.Com Technologies Inc.	Randy Garg	Catherine R. McCreary	Jessie Rupp		Maureen Hannah
Amy M Spencer	Sarah Burgess	Elizabeth Gautschi				Dana Lee Harris
Phyllis Stoffman	Burnaby Dental Centre					Steven Hill

Dayna Holland	Bev Schultz	Sharon Yetman	In honour of Rachel Simpson	In memory of Shawn Laari	Shuxin Lim	EGBC Women in Engineering and GeoScience
Lois Hollstedt	Christine E. Smith	In honour of Leslie Diamond	Spatial R&D	Julia Nyberg and Alexander Moss	Justin Loo	In recognition of YWCA Focus at Work
Kimberley Horrocks	Philippa Smith	Shirley Barnett	In honour of Robin Smith	In memory of Nora Lawrence	Jerilynne Luna	Fiera Lo
Ann Howe	Alaina Soucie	In honour of Ruth Embree	Madeline Smith	Mary Harder	Balvir Mann	
Tamara E. Hung	Sandra Stevenson	Val Embree	In honour of Carole Anne Soong	In memory of Len Libin	Daljit Mann	
Jane Hutton	Anne Stewart	In honour of JoAnne Fahr	Nicole Chang	Lynda Jackson	Marilou Mondia	Endowments
Brenda Jebesen	Eileen B. Stewart	Jordan Fahr	Mariele Smith	Kingkarn Mansilatham	Katrina Morgan	Rina Maria Bidin Fund
Mary Jordan	Phyllis Stoffman	In honour of the Diane Forsythe-Abbott Crabtree Luncheon	Derek Soong	In memory of Pauline Louis	Nadri Korean Restaurant	The Daryl Bramall (Crabtree Corner) Endowment Fund for Women and Children Living in Poverty
Nancy Keithly	Arden Sutherland	Muriel Richards	Therese Soong	Carole Anne Soong	Dan Padovan	May Brown Leadership Endowment for Young Women
Sheila King	Sherry Tryssenaar	In honour of Janna Fownes	In honour of Lee Sproule	In memory of Mary McLean	Jagoda Panovic	The Crabtree Corner Endowment from Summer Split Foundation, held at Vancouver Foundation
Jeri Krogseth	Woon Ai Tsang	Rochelle Rezanoff	Shirley Donald	Carol McLean	Taranee Ponjani	Caroline J. Dunn Endowment Fund
Barbara Lane	Lynne Tyler	In honour of Dave Gardiner	In honour of Rohit Sukhija	In memory of Mary Anne McWaters	Boris Si	Ralph and Grace Fisher Endowment for Crabtree Corner
Kathleen Leavens	Brenda Ulmer	Stan Miller	Aashna Parmar	Elizabeth Gautschi	Michelle Sing	Jean Giles Memorial Endowment for Women and Children Living in Poverty
Joanne Lee	Dr. Kim van der Woerd and Dr. Ron Roesch	In honour of Joy Gaze	In honour of Arden Sutherland	In memory of Juana Morris Martineez	Philippa Smith	The Charles and Adeliene Hill Endowment Fund
Hugh and Judy Lindsay	Marg Van Wielingen	Kerry McPhedran	MJ Morris	Gabriela Praget	Heather Stephenson	Dan Hill Memorial Endowment for Women and Children Living in Poverty
Bev Lindsey	Lisa Vogt	In honour of Joy and Harold Gray	In honour of Patrick Turner	In memory of Mary Miller	Phyllis Stoffman	Mary C. Jordan Endowment for Economic Independence
Margaret J. Livingstone	Jennifer Wade	Pamela Joy Mitchell	B. J. Mann	Sheilah Morgan	Maria Surowka	North Growth Foundation Endowment Fund
Joyce McCusker	Mary Wallace Poole	In honour of Montana Hauser	In honour of Lynne Tyler	In memory of Otello Nocente	Arden Sutherland	Anonymous Donor
Pauline McInnes	Margaret Waterton	BC Association of Farmer's Markets	Stephen Tyler	Daniel and Pauline Nocente	Oliver Talento	Named Funds
Christy McLeod	Bruce and Lis Welch	In honour of Carrie Howes	In honour of Deirdre Wood	In memory of Betti Port	Tam Family	Janet Austin Advocacy and Public Education Fund
Laurie McLeod	Anita Welke	Mila Lane	Irene Vanderwoerd	Geraldine Alongi	Winnie Tam	Boivie Family Fund
Paul McLoughlin	Margaret Williams	In honour of Cathy Imrie	In honour of Lisa Yeates	Rita Morin	Eduardo Tee	Kitty Heller Independence Fund
Caroline McMahon	Susan Witter	David Berkowitz	Shana Alexander	Jean Orr	Theodore Tee	Kay Nineties Fund for YWCA Single Mothers' Support Services
Kerry McPhedran	Janet Wood	In honour of Darlene Juschka and Betty Tumilson Hollett	In memory of Kay Alsop	In memory of Patricia Robinson	Cliff Thorbes	Marnie Marley FASD Fund
Jean Macdonald	Paul and Sarah Wu	Amy Juschka	First Church of Christ Scientist West Vancouver	Sharon Kamitakahara	Claudia Tran-Nguyen	YWCA Friendship Circle
Mary Macdonald	Lisa Yoo	In honour of Stacy Lawson	In memory of Anita I. Armstrong	In memory of Marian Ingrid Snowball	Min-Soo Uim	(\$100-\$499)
Valerie Mann	20 Anonymous Donors	Nance Bass	Dowdle/Gauthier Family	Richard Binnendyk	John Villamejor	Frank and Phyllis Abbott
JoAn L. Maurer	Estates	In honour of Grace Lee	In memory of Evelynne Balfe	Ray Brothers Investments Ltd	Josephine Williams	Aya Abdelfatah
Kirsty Maxwell	The Alma VanDusen Fund	Franny E Adornments Inc.	Louise Johnston	Synergy Business Lawyers LLP	3 Anonymous Donors	Alim Abdulla
Jill Munro-Metheral and Shawn Metheral	The Estate of Kathleen (Kay) Alsop	In honour of Saisawat Mansilatham	In memory of Gordon T. Birrell	Elizabeth West	In memory of Dorothy Thornton	Charles Abel
Joan Michalson	The Estate of Georgina M. Brunette	Kingkarn Mansilatham	Sharon McIntee Birrell	In memory of Grace Tee	Walter Thornton	Anita Adams
Connie Mohat	The Mark and Phae Collins Fund	In honour of Thamrong Mansilatham	In memory of Marion Blough	AVG Plumbing Inc.	In memory of Avanell Tuttle	Rocky Adams
Rita Morin	The Estate of Dr. Joan Ford	Kingkarn Mansilatham	Paul F. Joseph	Maria Helen Adriano	A. J. Murdoch	Robert and Shelly Adderley
Wanda L. Morris	The Estate of Rose Jones	In honour of Marjah & Chris	Barbara Brown	Puspa Affandi	In memory of Sarah Verstegen	Ken Addison
Sheila Moynihan	P. M. MacKay Fund	Emily Copp	Greg and Suzanne Brown	Khayla Almonte-Davila	Carol White	Tannaz Afshar
June Murdoch	The Agnes MacKay Groundwater Publicover Fund	In honour of Dr. Carole Mills and Ms. Sarah Williams	In memory of Bill and Lill Brownlie	Mario Amistad	In memory of Meta Welke	Karen Aiouch
Marilyn Murray	The Estate of Margaret Ramsay	Susan Mills	Faye Brownlie	Jenica Cruz	Anita Welke	Galan Akin
Carolyn Neilson and Christopher Frigon	The Estate of Jennifer B. Rodrigues	In honour of Elizabeth Montgomery	In memory of Dale Embree	Patrocinia Dahlen	In memory of Doris Miu Yin Wong	Sogol Alavi
Herma Neyndorff	Anonymous	Carole Anne Soong	Ken Embree	Christopher Dang	Wilson Wong	Alca Consulting Inc.
Jan Noppe	Tributes	In honour of Ron Roesch	In memory of Rolf Frowein	Maria Angela de Leon	In recognition of Blizzard Entertainment Employees	Matthew Alexander
Julia Nyberg	In honour of Jarinya Angkasuwan	In honour of Elizabeth Montgomery	Liselotte Frowein	Naomi Devine	Blizzard Entertainment	Tiffany Alexander
Pamela Oram	Kingkarn Mansilatham	Kingkarn Mansilatham	In memory of Jean Giles	Louise Donovan	In recognition of Julia Chung	Wes Alexander
Alison Orr	In honour of Hon. Janet Austin, Lt.Gov. BC	In honour of Roongrawee Naparat	Linda Loo	Ashley Elchuk	Bonnie Foley-Wong	Shameine Ali
Tracey Osborne	Gwendolyn Yip	Kingkarn Mansilatham	In memory of Barbara Joan Hinton	Amelia Gengania	In recognition of Murray Dinwoodie	Jacqueline Allan
Helen Oster	In honour of Kelsea B.	In honour of Noel Piper	B. Joyce Hinton	Enriqueta Gomez	Jennifer Breeze	Barry Allen
Janet Pattinson	Paige Batistic	Roberto Bruzzese	In memory of Kathy Johns	Susan Gomez	In recognition of East Side Games	W. Graham Allen Management Corporation
Lindsay Perceval	In honour of Sandee Bathgate	In honour of Irmhild Plettner	Sharon and Kenneth Johns	Gabriel Gueco	Pacific Rim Immigration Inc.	Sarah Allinger
Genevieve Pinto	Nancy Emery	Erika Plettner	In memory of Judy St. Martin	Mikiko Hamanaka	In recognition of Jena Fair	Jack Allpress
Doreen Player	In honour of Kim Beil	In honour of Rock'n the Park 2021	Carrie St. Martin	Leanne Henn	Teresa Perri	Raul Allueva
Dr. Erika Plettner	B. J. Mann	The Joseph Segal Family Foundation	In honour of Edith Severiano dos Passos	Corrina Hill	Jane Shin	Janet Allwork
Kathleen Pomeroy	In honour of Zarah Blondin and Noah Hubburmin	In honour of Ron Roesch	Kitomir T. da Silva	Peggy Ho Yuen	In recognition of Susan Justice	
Moura Quayle	Stacey Boothman	Irene Vanderwoerd		Lois Hollstedt	Megan Murphy	
Billie Raptis	In honour of Doris Cameron	In memory of Margaret Ann Jones		Valerie Hunt	In recognition of Connie Lau	
Pearl Roberts	Aileen Green	Ruth Jones		Rosie Jeon	Brenda Lau	
Joan Robillard	In honour of Sherry Cavallin	In memory of Caroline Klaver		Sukhbir Khangura	In recognition of Deena McLeod	
Elia Robles	Assante Financial Services	Tessa Alexander		Michele Koo	Karen Thomson	
Judy Rogers				Barbara Lane	In recognition of White Ribbon Campaign - Remembering the 1989 Montreal Massacre	
Lenore Rosen				Eunize Lao		
Debbie Rowe				Man Hei Lee		
Gail Ruddy						
Jessie Rupp						
Michelle Rupp						
Jill Shroder and Michael Raymond						

Amney Amery	Adrian Beruschi	Dan Cameron	Andrew Cook	Paul Doucet	John Frostad	Joanne Gum
Mario Amistad	Richard Binnendyk	Ann Campbell	Bill and Karen Cooke	Robb and Linda Douglas	Dr. Margaret Fryer	Chrystalynn Gurniak
Matthew Anderson	Cheryl Bishop	Irene Campbell	Emily Copp	Keith Dove	Michael Fugman	Matt Gustafson
Barbara and Patrick Andrew	Robbie Bishop	Margarette Campbell	Bart Corbett	N. Lauren Dowad	Ed Fujii	Nicole Guy
Peter Andrinopoulos	Fred Bjork	Nick Campbell	Lynn Corrigan	Dowdle/Gauthier Families	Kristin Gable	Karen Hallam
Jo-ann Archibald	Rob Blackwell	Scott Campbell	Carolyn Costigan	Warren Downs	Katarina Gabrilo	Kelsey Hamill
Anthony Arduini	Janine Blair	Uyen Cao	Doug Courtemanche	Yvonne Dresen	Alain Gagnon	Sarah Hamilton
Dale Armstrong	Jeffrey Block	Alexandra Carlisle	Ellis Courtney	Patricia Drugge	Maureen Gales	Carson Hamm
Marina Arnaud	Blue Vest Pest & Wildlife Control	Evelyn Carroll	Sean Cox	Alexandra DuBelko and Adam Rosenthal	Paula Gallagher	Ryan Haney
Frances and Dave Ashdown	Kyle Blyth	Claire Carsley	Sean Crawford	Chris Duffy	Taylor Gallagher	Helen Hansen
Siobhan Aspinall	Randy Bock	Diana Carter	Andrew Creighton	Alex Duncan	Tyler Galye	Cassandra Hanson
Blake Asselstine	Faramarz Bogzaran	Michael R. Carter	John Crook	Suzanne Dunn	Tasala Gambule	Teresa Hanson
Ian Asselstine	Mojgan Bogzaran	Hilary Cassady	Darcie Crowe	Margo Dunnet	Christie Garafalo	Mary and Ernest Harder
Atomic Cartoons	Taylor Boivin	Cassandra Hanson and Greg Cassap	Patricia Crowe	Jill Earthy	Linda Garden	Brent Hardy
Michael Aucone	Barbara and Todd Bolenback	Stephen Casson	Jacqueline and Ryan Curtis	Rick Eastman	Adam Garlick	Lorraine and Allan Hardy
Ali Ayala-Davidson	Roberta Borgen	Chris Casumpang	Jitomir da Silva	Allen and Connie Eaves	Stephen Gaskin	Melanie Hardy
Lillian Baaske	James Borza	Renata Caverzan	Barbara Dale	Allison Eddy	Caroline Gatchalian	Nicholas Hardy
Badger Minerals	Ingrid Bos	Sandra Cawley	Susan Danard	Scott Ellis	Lucas Gates	Heidi Harms
Glenn Bailey	Kelly Bosello	Raj Chahal	Brian Dartnell	Warren Elmer	Elyse Gawley	Barb Harris
Robert Bailey	Carmine Boskovich	Bill Challenger	Lara Dauphinee	Ron Emerson	Jennifer and Christopher Gaze	Brenda Harrison
Susan Bailey	Trisha Bouchard	Carol Chan	Carolyn Davies	Kevin T. England	Josh Gaze	Alison Hart
Daman Bains	Russ Bougie	Raymond Chan	Patrick Davis	Marcos Ergas	Sarah Gaze	Sandra Hartney
Denise Baker	Carol Boutin	Nicole Chang	Karen Dawson	Morris Ergas	Morray Genge	Ainslie Harvey
Carel and Dick Ballard	Jim and Mary Clare Bovard	Ryan Chen	Lynne De Cew	Maret Erickson	Kate Gerson	Malcolm Hasman
Marc Ballard	Lucas Boyd	Isabella Cheng	Michele De Fehr	Almira Esmail	Erin Gibault	Rick Hastings
Gabor Balogh	Susan Boyd	Jane Cherry	Maria Angela de Leon	Justin Estby	Andrew Gibbins	John V. Hatton
Hamir Bansal	Kate Marion Boyle	Alan Cheuk	Karen Dearlove	James Esworthy	Prem Gill	Havana Kitchen Inc
Michael Banwell and Monique Fouquet	Kathy Bradwell	Donna Cheung	Elaine Decker	Ryan Euverman	Robin Gill	Iwona Hayashi
Catherine Bargaen	Janet Brady	Faustina Cheung	Murray DeGirolamo	Catherine Evans	Rodney Gill	Jonathan Hays
Shiela Barkey	Trevor Brady	Norm Chin	Mark DeGoutiere	David Eyre	Tony Gill	Erik Heck
Kris Barnard	Audrey Bragagnolo	Shelley Chin	Rob Dekam	Mike Fadum	Brad Gilmore	Michael Heck
Joan Barnett	Darren Brattston	Blaire Chisholm	Dana Dekker	Taylor Fahr	Jo Anne Gin	Ross Hedley
David Barron	David Brear	Tiffany Chiu	Dean Delandreville	Maureen Fairhurst	Cynthia Girling	Melissa Heer
Shelly Barrow	Tiffany Brebner	Elaine Chong	Johanna den Hertog	Brian Fearon	Girls Can Talk Society	Steve Heim
Rachel Barstow	Beth Breisnes	Jean Chose	Leanne Denis	Katie Fedosenko	Evan Gjernes	Karlene Heinke
Marvin Bartell	Kathy Bright	Fontaine Chow	Stephanie Denner	Michael Feist	Jillian Glennie	Josie Heisig
Joseph Basic	Steve Brooke	Ham Li Chow	Sandra Dent	Urs Fellmann	Mike Gloeckner	Kelley Heydyt
Grant Basran	Ryan Brooks	Afsara Chowdhury	Alex Dey	Betty-Anne Fenwick	Cesar Gomes	Gerry Helmer
Kulwant Bassi	Chris Brown	Wendy Chronik	Karen Der	Marisa Ferrara	Susan Gomez	Simon Henderson
Anita Bathe	Earl Brown	James Chung	Nick Deramio	Rosetta Ferrari	The Goodwin Family, in memory of Millicent G. Fleming	Scott Hennig
Mike Battistel	Jesse Brown	Larry Chung	Lucy Devita	Kathleen Ferraro	Carol Gordon	Brian Henry
John Baxter	Nigel Brown	Denise Clark	Jane Dewitt	Lynn Field	Sarah Gordon	Travis Henschel
Rick Baxter	Sarah Brown	Andrew Clarke	Alex Dey	Helen Fine	Sherrill Grace	Adrien Herberts
BC Association of Farmer's Markets	Faye Brownlie	William and Janis Clarke	Traci Deyrmenjian	Bruno Fiorvento	Laurie Grant	Tammy Hester
Ian Beardmore	Mary and Vaughan Bruneau	Sylvia Clauder	Gary Dhaliwal	Robert Fiorvento	Barbara Grantham and Andrew Wilkinson	Mel Hiebert
Gillian Beattie	Marie-Luise Brunnhofer	Catherine Clements	Bobby Dhillon	Traci Fitzgerald	Erin Gray	Andrea Hilder
Rose Beatty	Angela Bucher	John Clerides	Robin Dhir	Elizabeth Fleming	Joan Gray	Corrina Hill
Carol Becker	Kevin Budd	Ardelle Cliff	Stephanie Di Biase	Judith Fleming	Shelley Gray	Kirk Hill
Margaret Bednard	Maureen Bulger	J. Stuart Clyne	Lawrence Diamond	David Fletcher	Aileen Green	David Hiltz
Sheila Begg	Michael Bull	Ferdinand Co So	Wayne Dick	Derrick Fluker	Kathy Greenberg	David Hines
Jane Belanger	Mary Kathleen Bunting	Michelle Coates	Manpreet Didden	Greg Fok	Karmel Leor Greenfield	Jennifer Hitti
Casey Bell Personal Real Estate Corporation	Carolyn Burak	Allan Coen	Lynn Dillon	Bonnie Foley-Wong	Genesa Greening	Felix Ho
David Bell	Alexander and Susan Burak	Kate Coffey	Nick Dinobile	Joanna Fonseca	Andrea Greenway	Penelope Ho
Trevor Bell	Pat Burkart	Maira and Bill Colbourne	Ric DiSimo	Amelia Foo	Elaine Grenon	Paul Hoar
Gerry Bellerive	Laurel and Noel Burke	Jonathan Coleman	Tam Do	Nancy Ford	Christopher Griffin	The Hockey Guy
Katie Benjamin and Brian Hikisch	Jeff Burton	Clara Coles	Quynh Doan	Amy Foreman	Dominique Gross	Randy Hoffman
Ryan Benn	Susan Burton	Lindsay Colin	Bethany Dobson	Douglas Forseth	Barbara Groundwater	Paul Holder
Mason Bennett	Richard Bush	Leslie Collin	Vanessa Docherty	Rob Foster	Cathryn Holler	Brett Holland
Rhiannon Bennett	Todd Butler	Katie Comley	Josh Dodman	Noel Fox	Lorraine Grout	Cathryn Holler
Mike Bernemann	Matthew Butner	Sumeet Dogra	Sumeet Dogra	Elizabeth Fraser	Pamella and Christopher Grover	Tanya Hook
Dr. Victoria Bernstein	Marilyn Butt	Community Women's Initiative - UBC Medicine	Mary Patricia Doherty	Graham Fraser	Ashlea Gudeit	Wendy Horel
Beth Berry	Seath Cahley	Grant Connell	Mike Doman	Noah Freedman	Mike Grywacheski	Wallace Houston
	Carmel Cahllenger	Andreas Conrad	Shirley and Scott Donald	Anna Freschi	Ros Guggi	James Howey
		Gareth Convery	Adam Donnelly	Kim Frezell		Jason Hsu

Tracy Hu	Serena Kassam	Daniel Lee	Jon McKinney	Margaret Monck	Gurch Ollek	Dolores Racine
Roy Huang	Terry Kaufenberg	Lisa Lee	James A. McKnight	Carla Mont	Doug O'Neill	Robert Radbourne
Susan Hughes	Gagandeep Kaur	Lisa Lee	Kelly McKnight	Robin Montcalm	Jaclyn O'Neill	Shahram Rafati
Rodger Huiteama	Aaron Keay	Jocelyne Legal	Andrea Mclean	Jasmine Mooney	Alison Orr	Houtan Raffi
Gurdip Hulait	Adam Kelly	Nicole Legault	Carol McLean	Shannon Mooney	Robert Orr	Marion Ralston
Erin Humeny	Laura Kennelly-Mohr	Richard Leisen	Cynthia McLean	Cathie Moroney	Sam Orr	Jose Ramirez
Sandra Hunt Chomyn	Kelsey Kerr	Kevin Lemieux	Ruth McLellan	Clark Morris	Alannah Osborn	Kevin Ramsubhag
Valerie Hunt	Sheila and Hamish Kerr	Nicole Lenihan	Michael McLenaghan and C A Jones	David Morris	Betty Ann Osler	Danielle Rana
Devynn Hurford	Maresa Kesselman	Andrew Lepper	Amber McLennan and Peter Muench	Brad Morrison	Thomas Ostapchuk	Bill Randall
Lesley Hutton	Perry Keung	Gisele Lermen	Jean McLeod	Simon Mortimer-Lamb	Rebecca Ouwehand	Nancy Ranger
Tien Huynh	Sukhbir Khangura	Patrick Lermite	Margot McMillan	Kyle Morton	Alison Owens	Ray Brothers Investments Ltd
Jeff Hyslop	Latty Khosla	Elaine Leung	Anne McMullin	Margaret Mubanda	Pacific Rim Immigration Inc.	Gilbert Raynard
Patrice Impey	Allison Killam	Michael Leung	Cameron McNeil	Ron Muldoon	Kristin Padilla	Tammy Rea
Joe Inkster	Elva Kim	Thomas Leung	Margaret McNeil	Josh Mulherin	Dan Padovan	Samuel Reed
Andrea Ironside	Kimia Medical Professional Corporation	Jocelyn Lewis	Caren McSherry	Dave Mullen	Henrique Pagnossi	Harvinder Reehal
Ray Irvine	Adriane King	Suzanne Lewis	Mary Ellen & Katie Maasik	Loretta Mulligan	Chenoa Pamer	Elise and Richard Rees
Tanya, Dave, Zoe and Madison Itter	Genevieve King	Carol Liao	Chris MacCauley	Jennifer Munro and Blair Russel	Liana Pan	Cindy Reeves
Laura Iwan	Rob King	Nicole Liddell	Marilyn MacCrimmon	Murchie's Tea & Coffee Ltd.	Bharat Panchal	Refrew Holdings Ltd.
Susan Jackson	Ellyne Kinney	Miu Fong (Jannique) Lim	Emma Macfarlane	Joyce Murphy	Olivia Panis	Gloria Reger
Carole Jacques	Patricia Kirkham	Raphael Lim	Oriana Adele MacGregor	Megan Murphy	Yoo-Hyun Park	Conrad Rego
Brigham Jagger	Mary Ann Kmetic	Simon Lim	Tara Mackay	Megan Murphy	John Parks	Jennifer Reid
Tristan Jagger	Margie Knox	Yan Lim	Sheila Mackenzie	Jim Murray	Aashna Parmar	Peter Les Reid
Roumina Jamal	Karen Kobel	Lawrence Lin	Andrew Mackinnon	Nadri Korean Restaurant	Alison Parry	David Reilly
Laura Jamieson	Joslin Kobylka	Dave and Anna Lind	Sarah MacKinnon	Teddy Nafrey	Linda Parsons	Sandy and Max Reimer
Jennifer Janssen	Myrna Koffman	Teal Linde	Matthew MacLean	Christina Nairn	Aleta Patchell	Mariska Reinerink
Emily Jansson	Don Konantz	Anita Lindsay	Sheila MacMahon	Anne Naser	David Paterson	Paul Reinhart
Brenda Janzen	Michele Koo	Candy Ling	Ian Macmillan	Cyrus Navabi	Christine and Ross Patterson	Justin Reitz
Bundeeep Jawanda	Sukhvir Kooner	Xuan Liu	Joan MacNab	Mario Negriz	Michelle Paulin	Elaine Reynolds and Ronald Zisman
Debbie Jay	Adam Kossack	Amber Loewen	Mei Madden	Alyson Neil	Bal Pawa	Natalie Reynolds
Kendre Jefferson	Paige Kraft	Ryan Lomas	Albert Mafimpa	Shelley Neil	Kathryn Pearson	Samantha Reynolds
Charlene Jenkins	Stephen Kramer	William Longstaff	Fred Mah	Carolyn Neilson and Christopher Frigon	George and Penny Pedersen	Launette Rieb
Eric Jensen	Stephen Kratzer	Andrew Lord	Lianna Mah and Jonathon Ng	Jennifer Randall Nelson	Ali Pejman	Dennis Ripoli
Somi Jeon	Marilyn and Robert Krell	Darren Lorenz	Nicole Mah	Kevin Nelson	Jill Pennefather	Rick Ripoli
Carole Jinks	Kacey Krenn	Jason Loscher	Ruby Mah	Lonnie Neufeld	Dan Perko	Alicia Roberts
Aussie Jiwani	Tim Kroetsch	Danielle Lovell	Danielle Melia	Roderick Neufeld	James Peters	Caitlin Roberts
Cody Johanson	Natasha Krotez and Charlene Menezes	Betty Anne Loy	M. June Melnychuk	Tony Neumeyer	Jotham Peters	Linda Roberts
Curtis Johansson	Moyna Krusell and Richard Bennett	Joe Lucke	Melnik Financial Planning and Investments Ltd	William New	Mark Peters	Martin Roberts
Sharon and Kenneth Johns	Stacy Kuiack	Andrew Lugsdin	Meme Brooks Design	New Faces Leaders Program at David Thompson Secondary	Sheryl Peters	Jane and Paul Robinson
Chris Johnson	Leora Kuttner	Jerilynne Luna	Marlon Mencl	Shannon and Brad Newman-Bennett	Wendy Petersen	Kevin Rokosh
Joy Johnson	Jeff Kuwica	Mike Lynch	Susan Mendelson	Art Ng	Andrew Petter	Pat Rose
Ray Johnson	Karen Kwok	Lynn Valley Garden Club	Alison Meredith	Peggy Ng	Jeff Petter	Dan Roselli
Stephanie Johnson	Ethan Lai	Andrew Lynn	Dylan Merrick	Bernadette Nguyen	Andy Pham	Joseph Rosen
Ewen Johnston	Bee Lalli	Corina Lynn	Catherine Mezei	Tien Nguyen	Janet Phelps	Liane Ross
Gladys and Allan Johnston	Leon Lalsingh	Stephanie Lynn	John Middleton	Leo Nicolaas	Irene Pickell	Pat Ross
Ken Johnston	Brian Lam	Rita McAllen	Renata Marie Mihailoff	Daniel Nieto	Kevin Pickell	Mr. Richard A. Ross and Ms. Dawn E. Polley
Louise Johnston	Alex Lando	Emily McCartney	Mike Bike	Paul Nijjer	April Pierce	Vicky Ross
Ronald Johnston	Barbara Lane	Cameron Mccaw	Sven Milelli	Josh and Michelle Nilson	Lisa Pietrow	Jeff Roth
Catherine Jones	Greg Lane	Heather McCaw	Greg Miles	Gino Nonni	Christine Pilkington	Clee Rowel
Christine Jones	Langley Chinese Moms' Group	Zachary McCre	Alastair and Annette Miller	Karen Nordlinger	Simon Pimstone	Annett Rozek
Linda Jones	Troy Lanigan	Joyce McCusker	Ashley Miller	Dominique Norville and Simon Davie	Bruce and Gwen Piper	Gail Ruddy
Linda Jones	Theresa Lannan	Lisa McDougall	Charlotte Miller	Julia Nyberg and Alexander Moss	Planful	Eric Ruggieri
Dan Jordan	Irving Laskin	Bev McDowell	Dianne Miller	Michael O'Cain	Katy Player	Ann Rumsby
Marella Joseph	Jean Latham	Daniel McGauley	Nancy Miller	Shane O'Donnell	Dr. Erika Plettner	Lisa Rupert
Hannah Julian	Dr. Brenda Lau	James McGregor	Stan Miller	John O'Donoghue	Pontem Consulting Group Ltd.	Alyssa Rutherford
Bruce Jung	Michael Law	Janice McGrenere	Patricia Milne	Marlie Oden and Ken Newbert	Greg Poole	Susie and Rob Ruttan
Jeanette Jung	Katherine Lazaruk	Cathie McGuire	Michelle Mina	Wendy Odwyer	Edoye Porbeni	Laura Ryan
Heather Kaart	Louise Leathley	Lauren McHoul	Paul Miskimmin	Gina Ogilvie	Ingrid Potter	Laura Ryan
Kado Flowers	Francine LeBlanc	Paula McInnis	Adam Mitchell	Ralph Ogilvie	Deborah Power	Neal Ryan
Paolo Kalaw	Jordan Leck	Sharon McIntee Birrell	Marnie Mitchell	Dr. Douglas and Marion Oldenburg	Darlene Prosser	SML Consultants Group Ltd.
Ken Kamminga	John Lecky	Rob McJunkin	Sheena Mitchell		Bernadette Pughe	Etab Saad
Dee Kane	Patrick Lecky	Sharlene Mckie	Bing Monahan		Louise and Robert Quart	Jonathan Saba
Margo Kane	Amy Lee				Anna Quijano	Jeremy Sales

Pat Sam	Richard Sims	Inde Sumal	Rubens Tse	Chuck We	Emad Yacoub	Rethink Communications
Kassie Sambaraju	KD Singh	Sunday Soy Candle Corp.	Chontelle Tuck	Jocelyne Weatherly	Daisy Yang	Andrey Safonov
Raymin Samra	Richi Singh	David Sung	Bill Tucker	Karen Webb	Sherry Yano	Isabelle Tang and Orange Youth Volunteers
Dawn Sandberg	Shane Singh	Judy Sung	Richard Tucker	Anne Webster	Yayoi Maruno	United Way TransLink Compass Pass Distribution Program
Aman Sandher	Shirley Sio	James Sutcliffe	Chris Tutton	Hedy Wei	Lisa Yeates	Dr. Kim van der Woerd and Dr. Ron Roesch
Paul Sandhu	Matthew Sisman	Margaret Sutcliffe	Stephen Tyler	Richard Weiland	Gwendolyn Yip	Vancouver Food Runners
Anne Sandor	Maria Siy	Randy Swant	Sean Ungemach	Jane and Gerry Weiler	Germaine Yoneda	T.W. Wong
Sonja Sanguinetti	Cary Skidmore	Danielle Swift	Alvin Unger	Louise Weir	Daniel Yoo	Youth Leadership Society of BC
Kimberley Santerre	Amanda Skoll	Ianne Sy	Pete and Kelly Unger	Derek Welbourn	Howard Young	Sam Zeitoun
Wayne Sarna	Kirsten Slenning	Gwynfor Symmons	Unitrend Plastics Mfg	Anita Welke	Ivy Loree Young	Anonymous Donor
Anton Scamvougeras	Cathy Smith	Synergy Business Lawyers LLP	Tamara Van Den Brink	Vanessa Wellington and John Clark	Andrea (Ke Feng) Yuan	2021 Women of Distinction Awards
Paul Scanlon	Greg Smith	Winston Szeto	Elijah Van Der Giessen	Eleanore Wellwood	Kai Yuen	Presenting Sponsor
Marina Scattolin	Gwen Smith	Elizabeth Wreford Tait	Jennier Van Evra	Theresa and Garry Weltzin	Vania Yuen	Scotiabank
Caroline Scheumann	Hannah Smith	David Takagawa	Keri van Gerven	Elizabeth West	Devina Zalesky	Legacy Sponsors
Carol Schneider	Julia Smith	Oliver Talento	Rita Vander Raadt	Mark West	Lynn Zanatta	BCAA
Kathleen Schneider	Ruby Smith	Winnie Tam	Bart Vanstaalduinen	Lynn & Bill Weymark	Sam Zeitoun	Clio
Glenn Schoenroth	Stephanie Smith	Roger Tangry	Dr. Jan Venter	Deirdre Whalen	Melissa Zimmerman	iA Financial Group
Melina Scholefield	Moiria Smyth	Brad Tanjerd	James Vercammen	Sally Whitehead	91 Anonymous Donors	MDA
Anne Schroder	The late Marian Snowball	Morgan Tanner	Patricia Vertinsky	Mark Whiting	3rd-Party Events	Nature's Path
Elizabeth and George Scott	Cynthia Soboren	Vikas Tanwar	John Vickerstaff	Jule Whitmore	Art Affair	Pacific Blue Cross
Suzanne Scott	Ilya Solnyshkin	Diana Tchakalian	Rose Vidas	Maureen Whittall	Rock N the Park	Reciprocal Consulting
Jennifer Scrubb	Suzanne Solven	Braham Teja	Judy Villeneuve	Elizabeth Whynot	AG Hair	SAP
Noha Sedky	Karim Somji	Julia Tennant	Anisha Virani	Ian Whyte	Ainsliewear	Seaspan
Kristen Seer	Ashwin Sood	Luleseged Joseph T-Giorgis	Haneef Virani	Chris Wick	Aritzia	UBC Sauder School of Business
Danielle Segal	Rosalie Soregaroli	Penelope Tham	Karim Virani	Ernie Wiens	Atlas Pots	Creating Change Sponsor
The Senft Family	Andrea Southcott	Tracy Theemes	Chelsea Virji	Penny Willett and Graeme Robinson	Authority Media	Amazon Canada
Jordan Sengara	Dianne Sparrow	Martin Thibodeau	Ron Vit	Don Williams	Carel and Dick Ballard	Tribute Sponsor
Nicole Senger Maas	Tatiana Specht	John Thiessen	Ruth Vodden	Josephine Williams	Julia Bennett	Absolute Software
Don Shahan	Tony Specken	Justin Thompson	Olga Volkoff	June Williams	Ricky Biring	Copperleaf
Janis Shandro	Gale Spick	Keith Thompson	Kevin Volz	Kate Williams	Canadian Health Food Association	Patron Sponsors
Judy Shane	Adina Spivak	Michael Thompson	Christine Vukusic	Michael Williams	Chard Development Ltd.	BC Housing
Keith Sharman	The Spothelfer Family	Rachael Thompson	Louis Wadsworth	Shelley Williams	Cause We Care Foundation	Say Love Projects
Kevin Sharp	Derek Spratt	Sean Thompson	Rick Wagner	PG Wilcox MD FRCPC Inc.	Cultivate Canada Society	The Printing House Ltd.
Apurva Shaw	Sharon St Michael	Tania Thompson	Vivian Wai	Eric Wilson	Face the World Foundation and Herrendorf Family Foundation	Media Sponsors
Pat Shaw	Aileen Stalker	Walter Thornton	Julie Walchli	Ken Wilson	FreshPoint	Global BC
Kyle Shearer	Scott Stanger	Jocelyn Tien-Wong	Stephen Wall	Kyle Wilson	Gray Seas Fishing Ltd	Global News Radio 980 CKNW
Michael Shein	Darren Starek	Barbara Tili	Kate Wallace	Ryan Wilson	Ismaili Council for BC	Miss604
Jim Shepard	Janice Stasiuk	Alison Tillman	Shari Wallace	Scott Wilson	Lush Handmade Cosmetics Ltd.	
Philippa Shepherd	Heather Stephenson	Mark Toews	Jakob Walter	Geoff Wiltshire	Tim and Shirley Manning	
Eric Sherbine	Sandra Stevenson	Patricia Tolmie	Joanne Walton	Kelly Wolf	Methanex	
Tom Shiffman	Anna R. Stewart	Steve Toms	Alex Wan	Amy Wong	Joanna Mukai	
Jane Shin	Chuck Stewart	Jason Tonin	Katrina Wang	Brenda Wong	Murchie's Tea & Coffee Ltd.	
Noah Shipman	Diane and Alan Stewart	Manpreet Toor	Keith and Miriam Ward	Kevin Wong	New Faces Leaders Program at David Thompson Secondary	
Hussein Shivji	Jan Stimpson	Kevin Torvik	Patricia Ward	Robyn Woodward	Onni Group	
Miah Shull Olmsted	Bob Stokes	Megan Tory	Mark Waslen	Heather Workman		
Karen Shuster	Lora Stone	Robert Toth	Johanna Watd	Patricia Woroch		
Duane Siegrist	Mary Stott	Shauna Towriss	J Robert Waterman	Julie Wright		
Corinne Sigouin	Tina Strehlke	Deborah Track	Janet Waterman	Sharon Xie		
Sandra Sigur	Tracy Stuby	Claudia Tran-Nguyen	Braeden Waters	Kessie Xu		
Eric Simmons	Kent Stuehmer	Brian Travis	Whitney Watson	Christine Yaco		
Tony Simmons	Janet Sturdevant	Karen Truscott	Bob Watt			

SUPPORT OUR WORK

**FOR IMMEDIATE
IMPACT, DONATE
ONLINE NOW**



DONATE

Your gift ensures that families across Metro Vancouver get the resources they need to build community, gain financial stability and move toward their goals.
ywcavan.org/donate



JOIN

YWCA Health + Fitness offers two modern, co-ed fitness facilities in downtown Vancouver. Revenues support programs for local women and families.
ywcavan.org/fitness



VOLUNTEER

Give back by mentoring, lending your skills and more. Our website features opportunities for individuals and groups.
ywcavan.org/volunteer



STAY

The YWCA Hotel provides affordable accommodations for local and international travelers, while generating funds that support local families.
ywcavan.org/hotel



YWCA Metro Vancouver
535 Hornby Street
Vancouver, BC V6C 2E8

tel 604 895 5850
fax 604 684 9171
donations@ywcavan.org
ywcavan.org

