

# 2021 ANNUAL REPORT









## OUR VISION

We boldly envision a just and equitable world for women, families and allies.

## OUR MISSION

We advance gender equity alongside women, families, Two-Spirit and gender diverse people through advocacy and integrated services that help support personal, collective and economic wellbeing.

## 2021 - 2022 BOARD OF DIRECTORS

**Chair:** Valerie Mann

**Vice-Chair:** Lawrie Ferguson

**Treasurer:** Cathy Imrie

**Secretary:** Marilyn Mauritz

### **Board Members:**

Paulina Cameron

Rosalind Campbell

Lisa Coltart

Roopa Davé

Elayna Diemert

Morna Sileika

Dianne Sparrow

Diane Sullivan

# MESSAGE FROM THE BOARD CHAIR AND INTERIM CEO

This past year has been one of both growth and reflection. While still dealing with the continuing challenges of the global pandemic, the YWCA completed 2021 stronger, more resilient and more focused on our key priorities as we completed the third year of our 2019-2022 strategic plan including the addition of new housing and employment programs.

In response to the seismic shifts in awareness of, and demands for, equity, diversity, inclusion and reconciliation, we have reaffirmed our commitment to walk the talk. Throughout 2021, we engaged staff and stakeholders to examine and re-set our Vision and Mission statements. We firmly believe that the updated versions of our Vision and Mission better capture the heart of our work and our hope for a just and equitable future.

This commitment is deepening our work for employees and program participants. In 2021, we surveyed YWCA staff and community members

to better understand their experiences with the organization and how we can build on our existing work to promote equity, diversity and inclusion. Staff committees on truth and reconciliation, gender inclusion and racial equity advised on strategy, shared information and organized training and events. Each of these committees was actively involved in the development of the updated Vision and Mission.

To engage the public and policy makers to create systemic change, we focused significant energy on advocacy over this past year. To raise awareness about gender-based violence, we unveiled the Wall for Women, an interactive 42-foot-high mural painted by renowned artist, Ola Volo. We worked with Rethink Communications to create this first-of-its kind artwork and are so proud that it won multiple awards, including first place in the Top Cause category at the Canadian Marketing Association Awards.

*YWCA staff*





Another exciting advocacy initiative that got underway is YWCA City Shift. This three-year project, with funding provided by Women and Gender Equality (WAGE) Canada, aims to improve the prosperity, security and participation of diverse women and girls by recommending increased use of Gender-Based Analysis Plus (GBA+) in municipal policy and processes.

We continued to spotlight the local housing crisis and focus on building more homes for women and families. Last year, we officially opened YWCA xʷl̓əpícən in Vancouver and YWCA May Brown Place in North Vancouver, creating 46 new safe and affordable homes for single mothers and their children. We completed a capital campaign for housing in Richmond that recently opened, and began a capital campaign for a new housing community in Burnaby. These projects take an incredible amount of coordinated effort with developers, funders, municipalities and community supporters and the resulting homes for women and children will have long-term impacts for generations to come.

Despite the challenges of the pandemic, we finished 2021 in an impressive position. Guests and members returned to the YWCA Hotel

and YWCA Health + Fitness Centre and our incredible staff continues to show up with dedication and care in all departments. We spent the latter part of 2021 and the first months of 2022 engaged in a CEO search and we are very pleased to have recently announced Erin Seeley as our new CEO to lead this incredible team into an exciting new chapter for YWCA Metro Vancouver.

Looking ahead, in 2022 we celebrate 125 years of YWCA Metro Vancouver's service to the community. What started with a humble building in a very different downtown Vancouver has grown into a multi-tiered, multi-location, non-profit social enterprise that reaches more than 45,000 people each year with specialized and effective programs and services. Our YWCA is an organization like no other. We are so proud of the work that we do, and are excited about the opportunities to do so much more to bring about positive and lasting change in the communities we serve.

To our committed community of donors, volunteers, participants and supporters, you fuel our passion every day. Thank you for supporting us in this journey toward a brighter future.



**Valerie Mann,**  
Board Chair



**Michelle Sing,**  
Interim CEO



# 2021 YEAR IN REVIEW

In 2021, donors like you helped support **73** programs in **178** locations\* in Metro Vancouver.

*\* In person and virtually*

YWCA Hotel guests and YWCA Health + Fitness members returned to our facilities, and program participants began to meet in person again to grow, heal and connect.

## In 2021, we:

Opened **2** new housing communities, providing **46** new homes for single mother-led families.



Unveiled the interactive Wall for Women mural to bring awareness to gender-based violence.



Introduced the **FASD Dictionary**, a first-of-its-kind online resource to educate people about Fetal Alcohol Spectrum Disorder.



Launched **7** new employment programs, serving:

- Immigrant women who have experienced domestic violence
- Women involved with the justice system
- Women entering trades
- Young entrepreneurs looking to launch their own start-ups
- Youth interested in working in pet care
- Job seekers who are experiencing depression or anxiety
- Those who have been unable to sustain employment

# CITY SHIFT

Launched **YWCA City Shift** to improve the prosperity, security and participation of diverse women and girls by engaging municipalities to adopt and implement Gender-Based Analysis Plus (GBA+) in policy and processes.

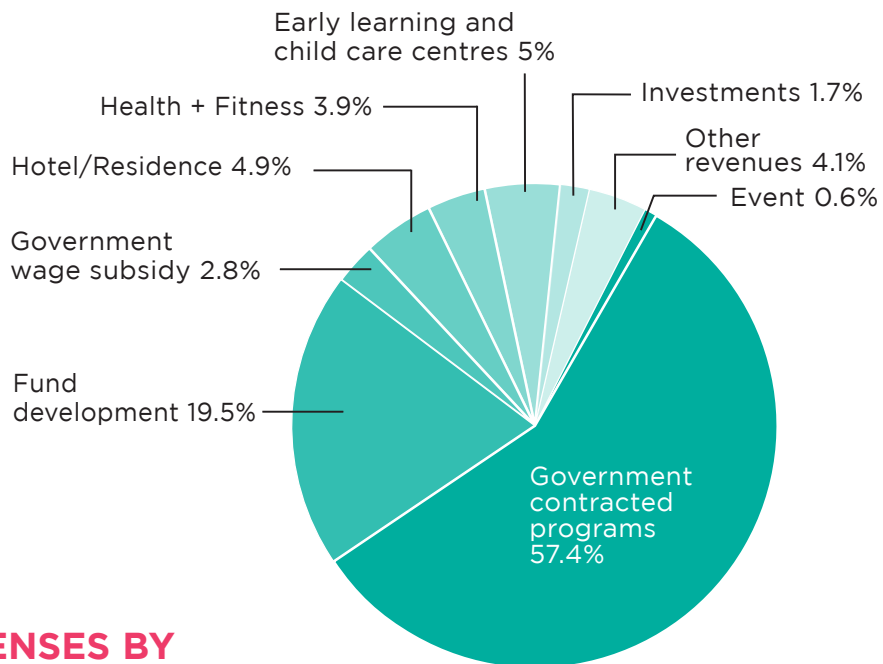
Offered **6** workshops to staff on Truth and Reconciliation and **3** workshops on Racial and Gender Equity. **90%** of YWCA staff are trained in the Truth and Reconciliation workshop provided by Reciprocal Consulting.



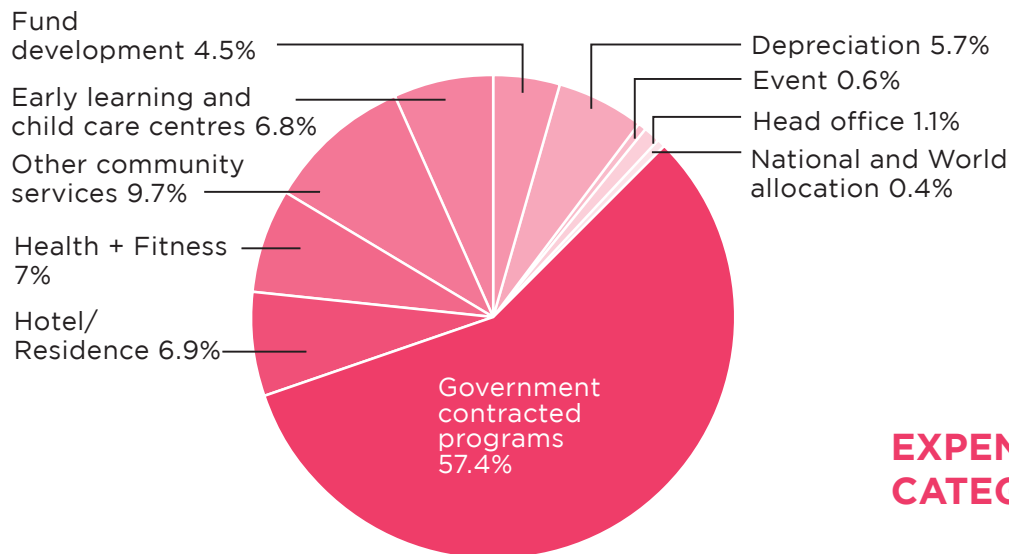


# 2021 FINANCIAL HIGHLIGHTS

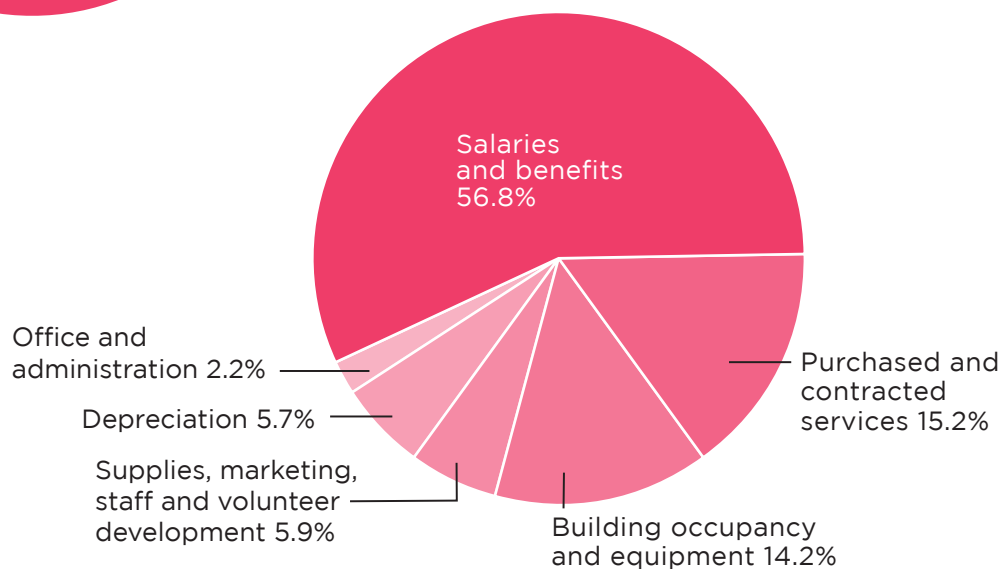
## REVENUES



## EXPENSES BY PROGRAM AREA



## EXPENSES BY CATEGORY





# BALANCE SHEET

As of December 31, 2021  
(In \$000)

## ASSETS

Cash and cash equivalents	16,899
Short-term investments	446
Accounts receivable	2,603
Inventory and prepaids	551
<b>Total Current Assets</b>	<b>20,499</b>

Restricted investments	4,063
Long-term investments	5,797
Property and equipment	59,639
<b>Total Assets</b>	<b>89,998</b>

## LIABILITIES AND FUND BALANCES

Accounts payable and accrued liabilities	3,387
Deferred revenue	3,804
Demand loan payable	4,865
Current portion of capital lease payable	11
Current portion of mortgage payable	233
<b>Total Current Liabilities</b>	<b>12,300</b>

Capital lease payable	4
Mortgage payable	4,061
<b>Total Liabilities</b>	<b>16,365</b>

## Fund Balances allocated to:

Unrestricted	518
BC Housing Replacement Reserve	1,281
Board Designated Endowment Fund	2,206
Board Designated Capital Repair and Replacement Fund	7,178
Donor Designated Endowment Funds	2,781
Board Designated Legacy Fund	589
Board Designated Sustainability Fund	689
Board Designated Employment Program Fund	5,500
Board Designated COVID-19 Fund	3,450
Capital Fund	49,441
<b>Total Fund Balances</b>	<b>73,633</b>

<b>Total Liabilities and Fund Balances</b>	<b>89,998</b>
--	---------------

# STATEMENT OF REVENUES AND EXPENSES

For the year ended December 31, 2021  
(In \$000)

## REVENUES

Government contracted programs	28,061
Fund development	9,549
Government wage subsidy	1,363
Hotel/Residence	2,412
Health + Fitness	1,915
Early learning and child care centres	2,459
Investment revenues	826
Other revenues	1,991
Women of Distinction Awards event	287
<b>Total</b>	<b>48,863</b>

## Fund development revenue includes the following:

Donations	8,013
Government grants	1,077
Fund development appeals in other programs	209
Gaming	250
<b>Total</b>	<b>9,549</b>

## EXPENSES BY PROGRAM AREA\*

\*Expenses by program area include allocations from head office of common administrative and support costs.

Government contracted programs	22,673
Hotel/Residence	2,738
Health + Fitness	2,763
Other community services	3,821
Early learning and child care centres	2,691
Fund development	1,795
Depreciation	2,255
Women of Distinction Awards event	231
Head office	419
National and World allocation	146
<b>Total</b>	<b>39,532</b>

The excess of revenues over expenses is a result of a multi-year provincial contract and funds designated for capital projects.

A copy of the 2021 audited financial statements is available upon request.



# STRONG START FOR CHILDREN

YWCA Metro Vancouver continues to advocate for inclusive, affordable and accessible universal child care.

We operate four early learning and child care centres, including **free short-term care for families in the Downtown Eastside** and **free care for children of teen mothers working to complete high school**.

**434** children received quality care at YWCA child care centres, including **10** children of teen moms who were finishing high school.





# SMART CHOICES FOR YOUTH

**501** Grade 7 students participated in YWCA Guide to High School after-school program.

**300** Grade 8-10 students took part in YWCA Dating Safe. They gained knowledge and skills to develop healthy relationships free from violence and abuse.



**230** Grade 11 and 12 girls and gender-diverse youth were matched with professional mentors to gain leadership skills and explore career options through the YWCA High School Mentorship program.



**35** self-identified Indigenous girls participated in the YWCA Circle of Sisters Indigenous Mentorship program.



# BUILDING SKILLS AND ECONOMIC WELLBEING

**879** job seekers received specialized employment support through **16** YWCA employment programs.

**3,229** people accessed job search assistance through the YWCA's WorkBC Employment Services Centres.

## PROGRAM HIGHLIGHT: RESTART

We partnered with Elizabeth Fry Society to provide a specialized employment program for women involved with the justice system. Funded by the Ministry of Advanced Education and Skills Training, Restart offered a safe, stigma-free environment to support participants to achieve their employment and education goals. **45** women participated in the program; some outcomes include:

- **14** participants secured employment (social services, retail, autobody and self-employment)
- **16** participants were accepted in educational programs (nursing, Indigenous justice, horticulture and agriculture, genealogy and others)
- **9** youth participants are focused on pursuing their Dogwood Diploma
- **5** participants secured volunteer positions



*Restart helped me find myself during the darkest, most difficult times. I would never have rediscovered the professional I was or that I can become in the future, had I not been shown how much there is still out there... The safe, nurturing environment created by women facilitating and participating is almost healing to the soul!*

*- Maryna R. program alumna*

Restart staff



# MAKING AFFORDABLE HOUSING A REALITY



“

*I'm so incredibly grateful to the YWCA for the opportunity to have a beautiful home for myself and my son, I can't ask for anything better. This is so important, especially for single moms.*

*- Elise, YWCA Housing resident*

Last year, we opened **2** new housing communities to address the region's housing crisis. YWCA May Brown Place in North Vancouver is now home to **14** single mothers and children, and YWCA xʷłəpicən\* in Vancouver provides **32** safe and affordable homes for single mothers and their children.

*\*The Musqueam Nation gifted us this very special name. xʷłəpicən means 'a hollow', reflecting the housing site's low-lying area under the Arbutus Ridge, and because a hollow is somewhere cozy for people to gather.*

**701** single mothers and children made their home in one of **14** YWCA housing communities



## NOURISHING THOSE IN NEED

**30,496** meals were served  
at YWCA Crabtree Corner  
in the Downtown Eastside.



Our garden volunteers  
logged in **700+** hours of work.



We offered **80 - 100** take-away meals  
per day out of the community kitchen.  
Local chefs and commissary kitchens  
helped prepare meals alongside  
Crabtree Corner's kitchen coordinator  
and dedicated volunteers.

We continued to provide grocery  
hampers and grocery gift cards for  
individuals and families. Seniors from  
the community began to return to the  
lunch program.

The YWCA Rooftop Garden  
yielded **1,550 pounds** of  
produce for Crabtree Corner  
and other YWCA programs.





## SUPPORTING MOTHERS WHO ARE PARENTING ALONE

YWCA Single Mothers' Support Services bring mothers together to connect at weekly group meetings, and to build bonds, share resources and become role models and support for each other. Groups have resumed in person, supporting mothers to build connections.

“

*Participating in the weekly Single Mom's group made me realize that I was not the only woman struggling with parenting, financial, emotional and other personal issues. Listening and sharing stories of challenges made me notice the resilience in each of these women - they all became heroes to me, which made me aware of my own inner power and potential to achieve my dreams.*

*- Clara, program participant*

**193** single mothers and **244** children took part in **16** YWCA Single Mothers' Support Groups, including two specialized support groups for single mothers of children with special needs.



## SUPPORTING ACCESS TO JUSTICE

The Staff Lawyer works with women with low incomes, women without legal status in Canada, newcomer women, racialized women, Indigenous women and trans women. Last year, the YWCA Legal Education program achieved some of its strongest trial results in the program's history.

**64** clients accessed our Staff Lawyer's services, including workshops, legal information and full legal representation in family law.





# THANK YOU TO OUR 2021 DONORS

We have done our best to include everyone who made a contribution of \$100 or more between January 1 and December 31, 2021. We apologize for any errors or omissions. Please contact us at 604 895 5850 if we have made an error in your acknowledgement.

## 2022 marks 125 years of serving our community.



**NEXT  
125**

The Next 125 is our fundraising and engagement campaign in recognition of our anniversary, driven by passionate individuals and families who are transforming their communities through donations of \$25,000 or more. We have raised an incredible \$13.6 million and would be honoured to welcome you to the campaign if you are interested. Our fundraising priority is our new YWCA Burnaby Grange Street capital campaign to build a 32-unit, five-storey housing community for single mothers and children. We have raised 37% of our \$11.8 million goal with \$7.4 million outstanding. **Consider joining The Next 125 by pledging your \$25,000 gift over five years. You can also donate in honour of our anniversary with a monthly gift of \$12.50 or \$125, or by joining as an Inner Circle member with a \$1,250 gift.** We are honoured to highlight the generosity of these dedicated supporters. *\*Campaign gifts received from individuals and families from August 2017 – March 2022. We sincerely regret any errors or omissions.*

### The Next 125 Donors and Ambassadors

#### \$2,500,000+

Anonymous Donor

#### \$1,000,000 - \$2,499,000

Suzanne Bolton and  
Jefferson Mooney

Summer Split Foundation,  
held at Vancouver  
Foundation

Anonymous Donor

#### \$500,000 - \$999,999

Mary C. Jordan Family

Moiz and Nadia Lalani  
Family

Pacific Spirit Foundation

Valley Properties Ltd and  
Rockcliffe Estates Ltd.

Anonymous Donor

#### \$250,000 - \$499,999

Cindy and Ryan Beedie

Kitty Heller Memorial  
Fund, held at Vancouver  
Foundation

In memory of Dr. Bik May  
Wai Lam

North Family Foundation

Anonymous Donor

#### \$150,000 - \$249,999

Diamond Foundation

The Grayross Foundation,  
held at Vancouver  
Foundation

Jeri Krogseth and Krogseth  
Family Foundation

Joanie McEwen and Irwin  
Nathanson

Joan C. McCarter  
Foundation, held at  
Vancouver Foundation

Shewan Foundation

The Somerset Foundation

Ratana and Arran Stephens

The Stollery Charitable  
Foundation

Dr. Ann Worth Charitable  
Foundation

4 Anonymous Donors

#### \$100,000 - \$149,999

Megan Abbott

Armstrong Family  
Foundation

Anne Dobbie and Dennis  
Ewasituk

The Gardiner Family

The Houssian Foundation

Mirhady Family Fund, held  
at Vancouver Foundation

Sylvia J. Ommanney

Karen Sander and Family

Sandy So

Dr. Kim van der Woerd and  
Dr. Ron Roesch

Windsor Plywood  
Foundation, held at  
Vancouver Foundation

#### \$50,000 - \$99,999

Burnaby Fire Fighters  
Charitable Society

Dilawri Group of Companies

John Fluevog Shoes

Diane Forsythe-Abbott  
Luncheon

Lauren Gehlen and Jamie  
Houssian

Anne Hale

Valerie Mann and John  
Condon

Cynthia Miles and Paul  
Balfour

Seedlings Foundation

The late Glenna Urbshadt  
and Katie Trydal

Bev Wallace

Bruce and Lis Welch

Whittall Family Fund, held  
at Vancouver Foundation

Garry Zlotnik

2 Anonymous Donors

#### \$25,000 - \$49,999

Shirley Barnett

Diana and Bruce Chan

Y.P. Heung Foundation

Peggy Ho Yuen

The Milan and Maureen  
Ilich Foundation

Catherine Imrie

Koo Family

David & Dorothy Lam  
Foundation

Lily Lee

Munford Family Foundation

Peterson

The Rajani Family

The Joseph Segal Family  
Foundation

A Tribute to Grace Tee

The Wolrige Foundation

3 Anonymous Donors

#### THE NEXT 125 AMBASSADORS

Diana Chan

Diane Forsythe-Abbott

Lauren Gehlen

Ann Mortifee

Sandy So

Dr. Kim van der Woerd

Lis Welch

Cynnle Woodward

YWCA staff and volunteer





## YWCA Leadership Circle

**VISIONARY  
(\$50,000+ / 3 YEARS)**

Megan Abbott  
Ames Family Foundation  
Armstrong Family Foundation  
BC Ministry of Advanced Education and Skills Training  
BC Ministry of Children and Family Development  
BC Ministry of Public Safety and Solicitor General  
BC Ministry of Social Development and Poverty Reduction  
Cindy and Ryan Beedie  
Suzanne Bolton and Jefferson Mooney  
Burnaby Fire Fighters Charitable Society  
Canadian Women's Foundation  
Canucks for Kids Fund  
Cause We Care Foundation  
Chan Sisters Chard Development Ltd. Foundation  
City of Burnaby  
City of North Vancouver  
City of Vancouver  
Computer for Success - Canada Incorporated  
Diamond Foundation  
Dilawri Group of Companies  
Anne Dobbie and Dennis Ewasiuk  
Employment and Social Development Canada  
First West Foundation and the Envision Financial Community Endowment  
FreshPoint  
The Gardiner Family  
Lauren Gehlen and Jamie Houssian  
Gilmore Park United Church  
Government of Canada - Canada Mortgage and Housing  
Government of Canada - Reaching Home - Canada's Homelessness Strategy  
Government of Canada - New Horizons for Seniors  
The Grayross Foundation, held at Vancouver Foundation  
Anne Hale  
Kitty Heller Memorial Fund, held at Vancouver Foundation  
The Hieros Foundation  
The Houssian Foundation  
Immigration, Refugees and Citizenship Canada  
Mary C. Jordan Family  
Jeri Krogseth and Krogseth Family Foundation  
Moiz and Nadia Lalani Family  
Joan C. McCarter Foundation, held at Victoria Foundation  
Joanie McEwen and Irwin Nathanson  
In memory of Dr. Bik May Wai Lam

Valerie Mann and John Condon  
Mirhady Family Fund, held at Vancouver Foundation  
North Family Foundation  
Sylvia Ommannney  
Pacific Spirit Foundation  
The Province of British Columbia - BC Housing  
Public Health Agency of Canada  
RBC Foundation  
Raven Foundation  
Rethink Communications Inc.  
Karen Sander and Family  
Scotiabank  
Seedlings Foundation  
Shewan Foundation  
Sandy So  
The Somerset Foundation  
Ratana and Arran Stephens  
The Stollery Charitable Foundation  
Streethome Foundation  
Summer Split Foundation, held at Vancouver Foundation  
TD Bank Group  
TD Friends of the Environment Foundation  
United Way British Columbia  
The late Glenna Urbshadt and Katie Trydal  
Valley Properties Ltd and Rockcliffe Estates Ltd.  
Dr. Kim van der Woerd and Dr. Ron Roesch  
Vancity  
Vancouver Foundation  
Bev Wallace  
Bruce and Lis Welch  
Whittall Family Fund, held at Vancouver Foundation  
Windsor Plywood Foundation, held at Vancouver Foundation  
Women and Gender Equality Canada  
Dr. Ann Worth Charitable Foundation  
Garry Zlotnik  
7 Anonymous Donors  
**CATALYST  
(\$15,000-\$49,999 / 3 YEARS)**  
AVC Management Inc.  
Accenture  
Andrew Mahon Foundation  
B2Gold Corp  
BC Hydro  
Shirley Barnett  
Peter and Joanne Brown  
Buchanan Programme and Alice Huang  
Roberta Lando Beiser  
Buddhist Compassion Relief Tzu-Chi Foundation of Canada  
Diana and Bruce Chan  
Chyzowski Charitable Foundation Inc  
The Co-operators  
Coast Capital Savings

Community Food Centres Canada  
Caroline Dunn  
Face the World Foundation  
John Fluevog Shoes  
Fluor Canada Ltd.  
G&F Financial Group  
Government of Canada's Emergency Community Support Fund, Coquitlam Foundation, Port Moody Foundation and Port Coquitlam Community Foundation  
Government of Canada, administered by United Way British Columbia  
GeoComply  
Myron Golden Alter Ego Trust  
Graham  
Oriana Green  
HSBC Bank Canada  
Y.P. Heung Foundation  
Steven Hill  
Peggy Ho Yuen  
iA Financial Group  
The ILLAHIE Foundation  
Catherine Imrie  
Diane and Warren Johnson  
Kaatza Foundation  
Leona Kolla and Alfred Schultz  
Koo Family  
Edith Lando Charitable Foundation  
The Lecky Foundation  
Lily Lee  
The Lobstick Foundation  
McCarthy Tétrault Foundation  
Fiona Macfarlane  
Reay and Lynda Mackay Foundation  
Cynthia Miles and Paul Balfour  
Munford Family Foundation  
Herma Neyndorff  
Daniel Nocente and Pauline Nocente  
Nordstrom  
PNG Enterprise Foundation  
The Pender Fund, held at Vancouver Foundation  
Peterson  
Port of Vancouver - Vancouver Fraser Port Authority  
Provincial Employees Community Services Fund  
Real Estate Board of Greater Vancouver - REALTORS Care  
Andre and Brock Rowland Foundation  
SPARC BC  
Sage Foundation  
The Joseph Segal Family Foundation  
Don & Joan Stanley Fund at the Edmonton Community Foundation  
Whitney and Mark Starkey  
R&J Stern Family Foundation  
Eileen B. Stewart Private Giving Fund, held at Nicola Wealth Private Giving Foundation

Surrey Homelessness and Housing Society  
Sherry Tryssenaar  
The UPS Foundation of Canada  
University of British Columbia  
Urban Impact  
Verch Charitable Fund  
Victory Square Technologies Inc.  
The Amir and Yasmin Virani Family Foundation  
Mischa Weisz Foundation  
The Wolrige Foundation  
9 Anonymous Donors

## YWCA Inner Circle

**PLATINUM CIRCLE  
(\$2,500-\$14,999)**

Adura Strategy Inc.  
Agriculture and Agri-Food Canada  
Anako Foundation  
Art Rapture Holdings Inc.  
Ascenta Foundation  
The Honourable Janet Austin  
AVC Management Inc.  
BC Nurses' Union  
Frank and Julie Barker  
BentalGreenOak  
Bovie Family Fund  
Dale Bosa  
June Bros  
Art Vertlieb-Bev Briscoe Foundation  
Deb Bryant  
Betty J. (Elizabeth) Burrell and Richard Campbell  
David Bustos  
Canadian Community Service Association  
Sherry Cavallin  
Sylvia Chen and Family  
Lisa Coltart  
Duane Cromwell  
Lillian and Ross Davidson Fund, held at Vancouver Foundation  
Leslie Diamond  
Elayna and Bruce Diemert  
Mike Fadum & Associates Ltd.  
JoAnne and Terry Fahr  
Dallas and Sean Fahy  
Fairbairn Foundation  
Lawrie Ferguson  
Charles and Lucile Flavell Family Fund, held at Vancouver Foundation  
Fograsher Family Fund, held at Nicola Wealth Private Giving Foundation  
Judy Garner  
Helen Gabel  
Karen Gilmore  
The Giustra Foundation  
The Hamber Foundation  
Health Sciences Association of BC  
Hillberg & Berk  
Hudson Pacific Properties

Impact Recruitment Ltd.  
Paul F. Joseph  
L&P Family Fund, held at Nicola Wealth Private Giving Foundation  
Diana Lam  
Alison Lawton  
Ledcor Group & Employees  
Barbara Lindsay  
London Drugs  
Bill Longman  
David Lyall  
Pauline and Murray McInnes  
The McGrane-Pearson Endowment Fund  
McWaters Endowment Fund  
MakeWay  
Claudette Martin  
JoAn and Michel Maurer  
Natalie Meixner  
Sandra Menzer  
Rita Morin and Brian Follett  
Moore Family Foundation  
Nancy Morrison  
Dianne Newell  
North Shore Community Foundation  
Lindsay Perceval  
Servane Phillips  
Quan Family Fund, held at Vancouver Foundation  
Randall Foundation  
Al Roadburg Foundation  
Brice Royer  
Melanie Rupp  
John Ryan  
Carl Saunders  
Suki Sekhon  
Azad and Yasmin Shamji  
Patricia and Ken Shields  
Dean Shillington Charitable Foundation  
Sikka Foundation  
Strand  
The Stewart Fund  
Oggy Talic  
Debra Tarigan and Stephen Gowan  
Woon Ai and Victor Tsang  
United Way TransLink Compass Pass Distribution  
Vancouver Sun Raise a Reader Campaign  
Clare Waters  
Weyerhaeuser - Parallam Plant  
Wheeler Family Foundation  
withinUs Natural Health  
Wilson Wong  
5 Anonymous Donors  
**GOLD CIRCLE (\$1,700-\$2,499)**  
Airstream Heating & Air Conditioning  
Deborah Armour  
BC & Yukon Society of Transition Houses  
Barb and Brian Bahry  
Kamal Basra  
Battered Women's Support

Services  
Steven Bruk  
City of Surrey  
Hugh and Sharon Cooper  
Janice De Clerck  
Nicola Donaldson  
Fasken  
Carol Givton  
Stephen Hall  
Paul Hamilton  
Cal and Sandra Johnson  
Julia and Hwa Yul Kim  
Linda Loo  
Albert J. McClean  
Jeffrey McCord  
Caroline McMahon  
Thomas Martini  
Diana L. Miles  
Mary Lou Miles  
Caroline North  
Jean Orr  
Teresa Perri  
Kathleen Pomeroy  
Judy Rogers  
St George's Greek Orthodox Cathedral Ladies Philoptochos Society  
Beverley Tamboline  
TD Canada Trust Cloverdale Crossing  
Union of BC Performers  
Carla Villar & James Dunn  
Carole Walkinshaw  
Warren and Twyla Wall  
Nicola Webb  
Wiegand Memorial Foundation Inc.  
Jane and Maurice Wong  
Barbara Vanderburgh Law Corporation  
Janet Wood  
5 Anonymous Donors  
**SILVER CIRCLE  
(\$1,000-\$1,699)**  
A & A Steel Enterprises  
AVG Plumbing Inc.  
Andrew Abramowich  
Alixima Solutions Ltd.  
Kim Allard  
Anthem Properties Group Ltd.  
Francesco Aquilini  
Robert Atkinson  
Reagan Attle and Chris Phillips  
BC Council for Families  
BGH Community Fund  
Christina and Chris Bennett  
David Berkowitz  
Leslie and Peter Blake  
Alexia Bloch  
Muriel Ann Boltezar  
Steven and Catherine Borritt  
Susan Borthwick  
Bosa Development  
Jim Bosa  
Anne Boyle

Doreen Braverman  
James Brown  
Jack Brownhill  
CIBC Children's Foundation  
Diana Bulley  
Molly Chan  
Charles Chang  
Dr. Lloyd and Kay Chapman Charitable Foundation  
Ashley Chester  
Alice Chung, Alive Health Centre  
Leslie G. Cliff and Mark P. Tindle  
Patti Cockcroft  
Shelley Crawford  
Crofton House School for Girls  
Bob Cross  
Lorraine Cunningham  
Lorraine Dansereau  
Brett Davidson  
Sharon deLisser  
Barbara Devlin  
Mary-Jo Dionne and Chad Bentley  
DP World (Canada) Inc.  
Amar Doman  
East Side Games Inc.  
East Van Panto  
Cheryl Eckert  
Margaret F. Edmonds  
Anne Elliott  
Engineers and Geoscientists BC  
Don Enns  
David Ferguson  
First Church of Christ Scientist West Vancouver  
Alana Flexman  
Dean Fogarty  
Marguerite Ford  
Christie & David Garofalo Family Foundation  
Karen Gelmon  
Catherine Gibson and Geoffrey Pitman  
Peter Gibson  
Maryke Gilmore  
James Gray  
Raminder Grewal  
Nina Hansen  
Harrigan Rentals & Equipment Ltd.  
Craig Hathaway  
Adam Heath  
Teresa Heung  
Ian Hibbert  
Dayna Holland  
Sam Hooge  
HootSuite Media, Inc.  
Dr. Hilary and Patsy Hui  
Tamara and Eric Hung  
In Stitch Us  
Invictus Accounting Group LLP  
Richard Jaffray  
Dr. Sandra Jenneson  
Sharon Jeroski

Judith Joseph	Phyllis Stoffman	Burnaby Dental Centre	Elizabeth Gautschi	Kim McDonald	Jessie Rupp	30 Anonymous Donors
Janice and Hank Ketcham	Stuyver's Bread	Cathy and Sandy Burpee	Joy Gaze	Michael McDonald	Lorelei Russell	<b>YWCA Legacy Circle</b>
Jason Kiselbach	Tam Family	Kathy Carpenter	Nadja Gehriger	Colleen L. Mcinnes	Neelam Sahota	
Patricia Laidley	Craig Taylor	Nikki Carvalho	Genoa Design International	Patricia McKendrick	Caroline Sanche	<b>PLANNED GIFTS</b>
Thomas Laing	Eduardo Tee	Shannon Cassidy	Anne Giardini	Mary and Roderick McNeil	Bobbi Sarai Tanguay	Ennas Abdussalam
Mila Lane	Theodore Tee	Christian Cavelti	John Gill	Patti MacAhonic	Chad Sayers	Susan Adams
Sheryl Lee	Brad Telford	Ghislaine Chan	Sean Gill	Mary Macdonald	Carolyn Scholz	Judith Adelman
Margaret Leong	TELUS	Martin Charlwood	Radina Giustra	Carole MacFarlane	Dawn Schooler	Puspa Affandi
Chris Liberta	Michael Tham	Liz Chaston	Tanis Goldman	Betty-Ann and Keith MacInnes	Lorimer Shenher	Sheila Allen
The Lions Gate Women's Probus	Byron Thom	Lokesh Chaudry	Colleen Grace	Martin MacLachlan	Rhonda Sherwood	Janet Ames
Lohn Foundation	Denice Tokunaga	Melissa Cheevers and Dr. Jesse Chew	Cody Green	Andrew MacNeily	Shauna Shortt	Deborah Armour
Christine Loock	Brenda Ulmer	Anita Cheng	Lawrence Green	Charles Martineau	Leslie and Mark Shuparski	David L. Arpin
Tom Luketic	Vancouver Pacific Lions Club	Sandra Cheung	Marie-Therese Grenier	Carol Mayer	Ray Signorello	The Honourable Janet Austin
Tracey Lundell	Michelle Vucko	Flavius Chisani	Deryl and Stephanie Griffith	Adam Alexander Melanson	Ken Sim and Teena Gupta Sim	Denise Baker
K. Allison MacDonald	Brooke N. Wade Charitable Foundation	Simon Chiu	Braden Haggerty	Victoria and John Mendes	Nathalie Sinclair	Diane Baker
Haley MacDougall	West Vancouver Community Foundation	Chrysalis	Kevin Halicki	Umberto Menghi	Michelle and Laurence Sing	Fionna Bayley
Mike MacKay	Vivian White	Patricia Chu	Bryan Hall	Michelle Merry	Luanne Sinnamon, in memory of Judy Martin	Sheila Begg
Francesco Aquilini	Chip Wilson	David Chucko	Dr. Judith Hall, OC	Nicole Milani	Claudia Sjoberg	Alise Benner
Moirra McConnell	Susan Witter	Churchill International Property Corporation	Ken Hanna	Jenny Miles	Philippa Smith	Suzanne Bolton
Tracey L. McVicar	David Wong	Jeff T. Clark	Alexandra Harris	Dr. Susan Mills	Patrick Soares	Susan Borthwick
Don Madsen	Jason Wood	Bruce Colwill	Dana Lee Harris	Yvonne Mitchell	Carole Anne Soong	Anne Boyle
Sheena and Samir Manji	Sue Yamamoto	Dan Cordingley	Kasey Harris	Michael Mjanes	Jason Soprovich	Sally Bryant
Marilyn Loewen Mauritz	Todd Yuen	Lisa Cowell	Judi Hess	Kirsten Molstad	Spatial R&D	Elizabeth J. Burrell
Michael Klein Law Corporation	14 Anonymous Donors	Carolyn and Robert Cross	Nicola Hill	Money Coaches Canada	Kim Spencer-Nairn	Aletha Buschman
Microserve	<b>BRONZE CIRCLE (\$500-\$999)</b>	Crowe MacKay LLP	Andrew Hiscox	Patty Montpellier	Annabel St John	Celia Campos
Brad Miller	30 Minute Hit Ltd.	Shawn Dahl	Melinda Hockley	MJ Morris	Carrie St. Martin	Betty J. Carter
Bo Mills	Barbara and Martin Aidelbaum	Grant Damery	Lois Hollstedt	Chris Morrison	Joan Stewart	Barb Cassack
Dak Molnar	Candice Alderson	Lotte and John Davis	Kimberley Horrocks	Norah Morrow	Barbara Stobie	Pamela Chambers
Christian and Dan Morrison	Barbara and Michael Aldritt	Deloitte & Touche Inc.	Gary Huebner	Marguerite Mousseau	Elsie & Oscar Stone Legacy Foundation	Diana Chan
Debbie and Michael Nagle	Anthony Alvaro	Monica Deol	Gayle Hunter and Brian Moghadam	June Murdoch	Minda Suchan	Dr. Hilda L. Ching
Tasnim Nathoo	John Anderson	Erik and Chantal Devries	Jane Hutton	Sarah and Andrew Nathanson	Arden Sutherland	Ann Coombs
Joanne Neufeld	Caroline Andrewes	Patrick Doiron	Tevia Jeffries	Jennifer Natland	Jim Szabo	Lynda Cooper
Wendy Orvig	Frank Anfield	Louise Donovan	Marni Johnson	Terry Neill	Carla Tak	Lynn Corrigan
David Osborne	Suzanne and Olin Anton	Fiona Douglas-Crampton	Alexia Jones	Gail Newell	Ahmet Ulker	Shelley Crawford
Aster and the late Herb Osen	Aplin Martin	Jason Dowdeswell	Ruth Jones and Keith Robinson	Ntirety, Inc.	Marg Van Wielingen	Duane Cromwel
Janice O'Sullivan	Valerie Arlette	Heather Duffy and Al Tebworth	Juliana Jiao Personal Real Estate Corporation	Barbara Ogden and Ron Collicutt	Marianne Vidler	Janey Cruise
Janet Pattinson	Associated Environmental Consultants Inc.	Brodie Dunlop	Amy Juschka and Kevin Hollett	One World Learning	Olivier Vincent	Janet David
David Pearson	Tony Astles	Valerie Dunsterville	Darlene Juschka	John O'Neill	Elaine Decker	Elaine Decker
David Prevost	Catherine Backman	Lyndsey Dyer	Vishav Jyoti Personal Real Estate Corporation	Karen Ong	Greg Vriend	Anne Dobbie and Dennis Ewasiuk
Tracy Proke and David Vogt	David Bain	EGBC Women in Engineering and GeoScience	Angel Kao	Pamela Oram	Jennifer Wade	Kaitlyn Domijan
Doug Pulver	Adriana Balic	Bob Elton	Salim Karim	Pacific Southshore Ventures Inc	Mike Walker	Fiona Douglas-Crampton
Moura Quayle	Alan Ballard	Val Embree	Lynne Kent	Lorne Palmer	Dan Wang	Heather Duffy
Sonya Reginato	Stephanie Ballard	Emerson Real Estate Group	Scott Kerr	Parker Family Fund	Linda Welch	Jennifer Dusting
Pamela and Dave Richardson Family Fund	Jessica Banning	Empress Lab	Theodore Kim	Alex Patton	Judy Wellington and Don Wadella	Barbara-Anne Eddy
Heather P. Riedl	Marko Barisic	Mark Epp	Chantelle Krish and Tilman Holschuh	Charles Pearson	Westminster Management Corporation	Jim Evans
Pearl Roberts	Joanne Barker	Alfonso Ergas	Nellie Lacusta	Brian and Theresa Pearson	Westside Montessori Academy	JoAnne and Terry Fahr
Luana Robertson	Joan Beaty	Jim Evans	Brad Lamoureux	Walter Pela	Stephanie Weterings	Joanne G. Fairley
David Rowntree	Lori Becker	Susan Evans	Craig Langdon	Jan Pezarro	Stephanie Whyte	Isobel Farrell
Elizabeth Roy	Vince Beiser	Arthur Evrensel	Catherine Lanyon	Monique Poncelet	Judi Whyte	Lucile Flavelle
Tanis Rubini	Brenda Benham	Risa Fahy	Dianne Lapierre	Howard and Geri Prior	Kaayla Wildor and Robert Wilds	Marguerite Ford
Laura and Richard Samaroo	Virginia Bird	Jena Fair	Anita and Ian Law	Dr. Jerilynn Prior	Lance Williams	Joan Fowler
Suromitra Sanatani	Stacey Boothman	Megan Filmer	Jayne Le Vierge	Sophia Pugh	Jocelyn and John Willis	Katarina Gabrilo
Jenny Sandy	Anita Braha	Diane Finegood	Joanne Lee and Desmond Chew	Tony Quattrin	Donna J. Wilson	Joy Gaze
Paul Sangha	Daphne Bramham	Roger Finnie	Sylvia Fitzgerald	Blair Quinn	Karen Wood	Helen Ghabel
David Schellenberg	Christine Brophy	Carole Forsythe	Nicole Lee	Peter Rackow	Heidi Worthington	Maia Gibb
Jill Schroder and Michael Reynolds	Barbara Brown	Richard Frampton	Gina Leslie	Vera Radyo	James Yang	Karen Gilmore
Laurie Schultz	Greg and Suzanne Brown	Bianca Fusco Zanatta and Marco Zanatta	Kathy Lilyholm	Andrew Reid	Peter & June Young Legacy Fund, held at Vancouver Foundation	Maryke Gilmore
William Smart	Cicely Bryce	Otaff Fyith	Judith Lindsay	Graeme Renton	Jeffrey Zarin	Carol Givton
Robin Smith	BuildDirect.Com Technologies Inc.	Randy Garg	Harald & Sharlene Ludwig	The Late Sandy Robertson	Hendrik Zessel	M J. Golden
Timothy Smith	Sarah Burgess		Catherine R. McCreary	Ms. Lenore Rosen and Dr. Joan Robillard	Daive Ziloli	Colleen Grace
Monica Soprovich				Judith Robson	Ziva Dynamics	Nichola Malim Hall
Amy M Spencer				Leia Rogers		Maureen Hannah
						Dana Lee Harris



Steven Hill	Jill Shroder and Michael Raymond	Assante Financial Services	Jitomir T. da Silva	Tessa Alexander	Man Hei Lee	<b>Remembering the 1989 Montreal Massacre</b>
Dayna Holland	Bev Schultz	Sharon Yetman	<b>In honour of Rachel Simpson</b>	<b>In memory of Shawn Laari</b>	Shuxin Lim	EGBC Women in Engineering and GeoScience
Lois Hollstedt	Christine E. Smith	<b>In honour of Leslie Diamond</b>	Spatial R&D	Julia Nyberg and Alexander Moss	Justin Loo	<b>In recognition of YWCA Focus at Work</b>
Kimberley Horrocks	Philippa Smith	Shirley Barnett	<b>In honour of Robin Smith</b>	<b>In memory of Nora Lawrence</b>	Jerilynn Luna	Fiera Lo
Ann Howe	Alaina Soucie	<b>In honour of Ruth Embree</b>	Madeline Smith	Mary Harder	Balvir Mann	<b>Endowments</b>
Tamara E. Hung	Sandra Stevenson	Val Embree	<b>In honour of Carole Anne Soong</b>	<b>In memory of Len Libin</b>	Daljit Mann	Rina Maria Bidin Fund
Jane Hutton	Anne Stewart	<b>In honour of JoAnne Fahr</b>	Nicole Chang	Lynda Jackson	Marilou Mondia	The Daryl Bramall (Crabtree Corner) Endowment Fund for- Women and Children Living in Poverty
Brenda Jebesen	Eileen B. Stewart	Jordan Fahr	Marielle Smith	Kingkarn Mansilatham	Katrina Morgan	May Brown Leadership Endowment for Young Women
Mary Jordan	Phyllis Stoffman	<b>In honour of the Diane Forsythe-Abbott Crabtree Luncheon</b>	Derek Soong	<b>In memory of Pauline Louis</b>	Nadri Korean Restaurant	The Crabtree Corner Endowment from Summer Split Foundation, held at Vancouver Foundation
Nancy Keithly	Arden Sutherland	Muriel Richards	Therese Soong	Carole Anne Soong	Dan Padovan	Caroline J. Dunn Endowment Fund
Sheila King	Sherry Trysenaar	<b>In honour of Janna Fownes</b>	<b>In honour of Lee Sproule</b>	<b>In memory of Mary McLean</b>	Jagoda Panovic	Ralph and Grace Fisher Endowment for Crabtree Corner
Jeri Krogseth	Woon Ai Tsang	Rochelle Rezansoff	Shirley Donald	Carol McLean	Taranee Ponjani	Jean Giles Memorial Endowment for Women and Children Living in Poverty
Barbara Lane	Lynne Tyler	<b>In honour of Dave Gardiner</b>	<b>In honour of Rohit Sukhija</b>	<b>In memory of Mary Anne McWaters</b>	Boris Si	The Charles and Adeliene Hill Endowment Fund
Kathleen Leavens	Brenda Ulmer	Stan Miller	Aashna Parmar	Elizabeth Gautschi	Michelle Sing	Dan Hill Memorial Endowment for Women and Children Living in Poverty
Joanne Lee	Dr. Kim van der Woerd and Dr. Ron Roesch	Kerry McPhedran	<b>In honour of Arden Sutherland</b>	<b>In memory of Juana Morris Martinez</b>	Philippa Smith	Mary C. Jordan Endowment for Economic Independence
Hugh and Judy Lindsay	Marg Van Wielingen	<b>In honour of Joy Gaze</b>	MJ Morris	Gabriela Praget	Heather Stephenson	North Growth Foundation Endowment Fund
Bev Lindsey	Lisa Vogt	<b>In honour of Joy and Harold Gray</b>	<b>In honour of Patrick Turner</b>	<b>In memory of Mary Miller</b>	Phyllis Stoffman	Anonymous Donor
Margaret J. Livingstone	Jennifer Wade	Pamela Joy Mitchell	B. J. Mann	Sheilah Morgan	Maria Surowka	<b>Named Funds</b>
Joyce McCusker	Margaret Waterton	<b>In honour of Montana Hauser</b>	<b>In honour of Lynne Tyler</b>	<b>In memory of Otello Nocente</b>	Arden Sutherland	Janet Austin Advocacy and Public Education Fund
Pauline McInnes	Bruce and Lis Welch	BC Association of Farmer's Markets	Stephen Tyler	Daniel and Pauline Nocente	Oliver Talento	Boivie Family Fund
Christy McLeod	Anita Welke	<b>In honour of Carrie Howes</b>	<b>In honour of Dr. Kim van der Woerd</b>	<b>In memory of Betti Port</b>	Tam Family	Kitty Heller Independence Fund
Laurie McLeod	Margaret Williams	Mila Lane	Irene Vanderwoerd	Geraldine Alongi	Winnie Tam	Kay Nineties Fund for YWCA Single Mothers' Support Services
Paul McLoughlin	Susan Witter	<b>In honour of Cathy Imrie</b>	<b>In honour of Deirdre Wood</b>	Rita Morin	Eduardo Tee	Marnie Marley FASD Fund
Caroline McMahon	Janet Wood	David Berkowitz	Jason Wood	Jean Orr	Theodore Tee	<b>YWCA Friendship Circle</b>
Kerry McPhedran	Paul and Sarah Wu	<b>In honour of Darlene Juschka and Betty Tumilson Hollett</b>	<b>In honour of Lisa Yeates</b>	<b>In memory of Patricia Robinson</b>	Cliff Thorbes	( <b>\$100-\$499</b> )
Jean Macdonald	Lisa Yoo	Amy Juschka	Shana Alexander	Sharon Kamitakahara	Claudia Tran-Nguyen	Frank and Phyllis Abbott
Mary Macdonald	20 Anonymous Donors	<b>In honour of Stacy Lawson</b>	<b>In memory of Kay Alsop</b>	<b>In memory of Marian Ingrid Snowball</b>	Min-Soo Uim	Aya Abdelfatah
Valerie Mann	<b>Estates</b>	Nance Bass	First Church of Christ Scientist West Vancouver	Richard Binnendyk	John Villamejor	Alim Abdulla
JoAn L. Maurer	The Alma VanDusen Fund	<b>In honour of Grace Lee</b>	<b>In honour of Anita I. Armstrong</b>	Ray Brothers Investments Ltd	Josephine Williams	Charles Abel
Kirsty Maxwell	The Estate of Kathleen (Kay) Alsop	Franny E Adornments Inc.	Dowdle/Gauthier Family	Elizabeth West	3 Anonymous Donors	Anita Adams
Jill Munro-Metheral and Shawn Metheral	The Estate of Georgina M. Brunette	<b>In honour of Saisawat Mansilatham</b>	Arden Sutherland	Synergy Business Lawyers LLP	<b>In memory of Dorothy Thornton</b>	Rocky Adams
Joan Michalson	The Mark and Phae Collins Fund	Kingkarn Mansilatham	<b>In memory of Evelyn Balfe</b>	Elizabeth West	<b>In memory of Sarah Tuttle</b>	Robert and Shelly Adderley
Connie Mohat	The Estate of Dr. Joan Ford	<b>In honour of Thamrong Mansilatham</b>	Louise Johnston	AVG Plumbing Inc.	Walter Thornton	Ken Addison
Rita Morin	P. M. MacKay Fund	Kingkarn Mansilatham	Ian Macmillan	Maria Helen Adriano	<b>In memory of Avaneell Tuttle</b>	Tannaz Afshar
Wanda L. Morris	The Agnes MacKay Groundwater Publicover Fund	<b>In honour of Marjah &amp; Chris</b>	<b>In memory of Gordon T. Birrell</b>	Puspa Affandi	A. J. Murdoch	Karen Aiouch
Sheila Moynihan	The Estate of Margaret Ramsay	Emily Copp	Sharon McIntee Birrell	Khayla Almonte-Davila	<b>In memory of Sarah Verstegen</b>	Galan Akin
June Murdoch	The Estate of Jennifer B. Rodrigues	<b>In honour of Dr. Carole Mills and Ms. Sarah Williams</b>	<b>In memory of Marion Blough</b>	Mario Amistad	Carol White	Sogol Alavi
Marilyn Murray	Anonymous	Susan Mills	Paul F. Joseph	Jenica Cruz	<b>In memory of Meta Welke</b>	Alca Consulting Inc.
Carolyn Neilson and Christopher Frigon	<b>Tributes</b>	<b>In honour of Elizabeth Montgomery</b>	<b>In memory of May Brown</b>	Patrocinia Dahlen	Anita Welke	Matthew Alexander
Herma Neyndorff	<b>In honour of Jarinya Angkasuwan</b>	Carole Anne Soong	Barbara Brown	Christopher Dang	<b>In memory of Doris Miu Yin Wong</b>	Tiffany Alexander
Jan Noppe	Kingkarn Mansilatham	<b>In honour of Roongrawee Naparat</b>	Greg and Suzanne Brown	Maria Angela de Leon	Wilson Wong	Wes Alexander
Julia Nyberg	<b>In honour of Hon. Janet Austin, Lt.Gov. BC</b>	Kingkarn Mansilatham	<b>In memory of Bill and Lill Brownlie</b>	Naomi Devine	<b>In recognition of Blizzard Entertainment Employees</b>	Shameine Ali
Pamela Oram	Gwendolyn Yip	<b>In honour of Noel Piper</b>	Faye Brownlie	Louise Donovan	Blizzard Entertainment	Jacqueline Allan
Alison Orr	<b>In honour of Kelsea B.</b>	Roberto Bruzzese	<b>In memory of Dale Embree</b>	Ashley Elchuk	<b>In recognition of Julia Chung</b>	Barry Allen
Tracey Osborne	Paige Batistic	<b>In honour of Irmhild Plettner</b>	Ken Embree	Amelia Gengania	Bonnie Foley-Wong	W. Graham Allen Management Corporation
Helen Oster	<b>In honour of Sandee Bathgate</b>	Erika Plettner	<b>In memory of Rolf Frowein</b>	Enriqueta Gomez	<b>In recognition of Murray Dinwoodie</b>	Sarah Allinger
Janet Pattinson	Nancy Emery	<b>In honour of Rock'n the Park 2021</b>	Liselotte Frowein	Susan Gomez	Jennifer Breeze	Jack Allpress
Lindsay Perceval	<b>In honour of Kim Beil</b>	The Joseph Segal Family Foundation	<b>In memory of Jean Giles</b>	Gabriel Gueco	<b>In recognition of East Side Games</b>	Raul Allueva
Genevieve Pinto	B. J. Mann	<b>In honour of Ron Roesch</b>	Linda Loo	Mikiko Hamanaka	Pacific Rim Immigration Inc.	
Doreen Player	<b>In honour of Zarah Blondin and Noah Hubburmin</b>	Irene Vanderwoerd	<b>In memory of Barbara Joan Hinton</b>	Leanne Henn	<b>In recognition of Jena Fair</b>	
Dr. Erika Plettner	Stacey Boothman	<b>In honour of Judy St. Martin</b>	B. Joyce Hinton	Corrina Hill	Teresa Perri	
Kathleen Pomeroy	<b>In honour of Doris Cameron</b>	Carrie St. Martin	<b>In memory of Kathy Johns</b>	Peggy Ho Yuen	Jane Shin	
Moura Quayle	Aileen Green	<b>In honour of Edith Severiano dos Passos</b>	Sharon and Kenneth Johns	Lois Hollstedt	<b>In recognition of Susan Justice</b>	
Billie Raptis	<b>In honour of Sherry Cavallin</b>		<b>In memory of Margaret Ann Jones</b>	Valerie Hunt	Megan Murphy	
Pearl Roberts			Ruth Jones	Rosie Jeon	<b>In recognition of Connie Lau</b>	
Joan Robillard			<b>In memory of Caroline Klaver</b>	Sukhbir Khangura	Brenda Lau	
Elia Robles				Michele Koo	<b>In recognition of Deena McLeod</b>	
Judy Rogers				Barbara Lane	Karen Thomson	
Lenore Rosen				Eunize Lao	<b>In recognition of White Ribbon Campaign -</b>	
Debbie Rowe						
Gail Ruddy						
Jessie Rupp						
Michelle Rupp						

Janet Allwork	Beth Berry	Carmel Cahllenger	Gareth Convery	Adam Donnelly	Kim Frezell	Ros Guggi
Amney Amery	Adrian Beruschi	Dan Cameron	Andrew Cook	Paul Doucet	John Frostad	Joanne Gum
Mario Amistad	Richard Binnendyk	Ann Campbell	Bill and Karen Cooke	Robb and Linda Douglas	Dr. Margaret Fryer	Chrystalynn Gurniak
Matthew Anderson	Cheryl Bishop	Irene Campbell	Emily Copp	Keith Dove	Michael Fugman	Matt Gustafson
Barbara and Patrick Andrew	Robbie Bishop	Margarette Campbell	Bart Corbett	N. Lauren Dowad	Ed Fujii	Nicole Guy
Peter Andrinopoulos	Fred Bjork	Nick Campbell	Lynn Corrigan	Dowdle/Gauthier Families	Kristin Gable	Karen Hallam
Jo-ann Archibald	Rob Blackwell	Scott Campbell	Carolyn Costigan	Warren Downs	Katarina Gabrilo	Kelsey Hamill
Anthony Arduini	Janine Blair	Uyen Cao	Doug Courtemanche	Yvonne Dresen	Alain Gagnon	Sarah Hamilton
Dale Armstrong	Jeffrey Block	Alexandra Carlisle	Ellis Courtney	Patricia Drugge	Maureen Gales	Carson Hamm
Marina Arnaud	Blue Vest Pest & Wildlife Control	Evelyn Carroll	Sean Cox	Alexandra DuBelko and Adam Rosenthal	Paula Gallagher	Ryan Haney
Frances and Dave Ashdown	Kyle Blyth	Claire Carsley	Sean Crawford	Chris Duffy	Taylor Gallaher	Helen Hansen
Siobhan Aspinall	Randy Bock	Diana Carter	Andrew Creighton	Alex Duncan	Tyler Galye	Cassandra Hanson
Blake Asselstine	Faramarz Bogzaran	Michael R. Carter	John Crook	Suzanne Dunn	Tasala Gambule	Teresa Hanson
Ian Asselstine	Mojgan Bogzaran	Hilary Cassady	Darcie Crowe	Margo Dunnet	Christie Garafalo	Mary and Ernest Harder
Atomic Cartoons	Taylor Boivin	Cassandra Hanson and Greg Cassap	Patricia Crowe	Jill Eathry	Linda Garden	Brent Hardy
Michael Aucone	Barbara and Todd Bolenback	Stephen Casson	Jacqueline and Ryan Curtis	Rick Eastman	Adam Garlick	Lorraine and Allan Hardy
Ali Ayala-Davidson	Roberta Borgen	Chris Casumpang	Cyper	Allen and Connie Eaves	Stephen Gaskin	Melanie Hardy
Lillian Baaske	James Borza	Renata Caverzan	Jitomir da Silva	Allison Eddy	Caroline Gatchalian	Nicholas Hardy
Badger Minerals	Ingrid Bos	Sandra Cawley	Barbara Dale	Scott Ellis	Lucas Gates	Heidi Harms
Glenn Bailey	Kelly Bosello	Raj Chahal	Susan Danard	Warren Elmer	Elyse Gawley	Barb Harris
Robert Bailey	Carmine Boskovich	Bill Challenger	Brian Dartnell	Ron Emerson	Jennifer and Christopher Gaze	Brenda Harrison
Susan Bailey	Trisha Bouchard	Carol Chan	Lara Dauphinee	Kevin T. England	Josh Gaze	Alison Hart
Daman Bains	Russ Bougie	Raymond Chan	Carolyn Davies	Marcos Ergas	Sarah Gaze	Sandra Hartney
Denise Baker	Carol Boutin	Nicole Chang	Patrick Davis	Morris Ergas	Morray Genge	Ainslie Harvey
Carel and Dick Ballard	Jim and Mary Clare Bovard	Ryan Chen	Karen Dawson	Maret Erickson	Kate Gerson	Malcolm Hasman
Marc Ballard	Lucas Boyd	Isabella Cheng	Lynne De Cew	Almira Esmail	Erin Gibault	Rick Hastings
Gabor Balogh	Susan Boyd	Jane Cherry	Michele De Fehr	Justin Estby	Andrew Gibbins	John V. Hatton
Hamir Bansal	Kate Marion Boyle	Alan Cheuk	Maria Angela de Leon	James Esworthy	Prem Gill	Havana Kitchen Inc
Michael Banwell and Monique Fouquet	Kathy Bradwell	Donna Cheung	Karen Dearlove	Ryan Euverman	Robin Gill	Iwona Hayashi
Catherine Bargaen	Janet Brady	Faustina Cheung	Elaine Decker	Catherine Evans	Rodney Gill	Jonathan Hays
Shiela Barkey	Trevor Brady	Norm Chin	Murray DeGirolamo	David Eyre	Tony Gill	Erik Heck
Kris Barnard	Audrey Bragagnolo	Shelley Chin	Mark DeGoutiere	Mike Fadum	Brad Gilmore	Michael Heck
Joan Barnett	Darren Brattston	Blaire Chisholm	Rob Dekam	Taylor Fahr	Jo Anne Gin	Ross Hedley
David Barron	David Brear	Tiffany Chiu	Dana Dekker	Maureen Fairhurst	Cynthia Girling	Melissa Heer
Shelly Barrow	Tiffany Brebner	Elaine Chong	Dean Delandreville	Brian Fearon	Girls Can Talk Society	Steve Heim
Rachel Barstow	Beth Breisnes	Jean Chose	Johanna den Hertog	Katie Fedosenko	Evan Gjernes	Karlene Heinke
Marvin Bartell	Kathy Bright	Fontaine Chow	Leanne Denis	Michael Feist	Jillian Glennie	Josie Heisig
Joseph Basic	Steve Brooke	Ham Li Chow	Stephanie Denner	Urs Fellmann	Mike Gloeckner	Kelley Heiydt
Grant Basran	Ryan Brooks	Afsara Chowdhury	Sandra Dent	Betty-Anne Fenwick	Cesar Gomes	Gerry Helmer
Kulwant Bassi	Chris Brown	Wendy Chrunik	Karen Der	Marisa Ferrara	Susan Gomez	Simon Henderson
Anita Bathe	Earl Brown	James Chung	Nick Deramio	Rosetta Ferrari	The Goodwin Family, in memory of Millicent G. Fleming	Scott Hennig
Mike Battistel	Jesse Brown	Larry Chung	Lucy Devita	Kathleen Ferraro	Carol Gordon	Brian Henry
John Baxter	Nigel Brown	Denise Clark	Jane Dewitt	Lynn Field	Sarah Gordon	Travis Henschel
Rick Baxter	Sarah Brown	Andrew Clarke	Alex Dey	Helen Fine	Sherrill Grace	Adrien Herberts
BC Association of Farmer's Markets	Faye Brownlie	William and Janis Clarke	Traci Deyrmenjian	Bruno Fiorvento	Laurie Grant	Tammy Hester
Ian Beardmore	Mary and Vaughan Bruneau	Sylvia Clauder	Gary Dhaliwal	Robert Fiorvento	Barbara Grantham and Andrew Wilkinson	Mel Hiebert
Gillian Beattie	Marie-Luise Brunnhofer	Catherine Clements	Bobby Dhillon	Traci Fitzgerald	Erin Gray	Andrea Hilder
Rose Beatty	Angela Bucher	John Clerides	Robin Dhir	Elizabeth Fleming	Joan Gray	Corrina Hill
Carol Becker	Kevin Budd	Ardelle Cliff	Stephanie Di Biase	Judith Fleming	Shelley Gray	Kirk Hill
Margaret Bednard	Maureen Bulger	J. Stuart Clyne	Lawrence Diamond	David Fletcher	Aileen Green	David Hiltz
Sheila Begg	Michael Bull	Ferdinand Co So	Wayne Dick	Derrick Fluker	Kathy Greenberg	David Hines
Jane Belanger	Mary Kathleen Bunting	Michelle Coates	Manpreet Didden	Greg Fok	Karmel Leor Greenfield	Jennifer Hitti
Casey Bell Personal Real Estate Corporation	Carolyn Burak	Allan Coen	Lynn Dillon	Bonnie Foley-Wong	Genesa Greening	Felix Ho
David Bell	Alexander and Susan Burak	Kate Coffey	Nick Dinobile	Joanna Fonseca	Paul Hoar	Penelope Ho
Trevor Bell	Pat Burkart	Maira and Bill Colbourne	Ric DiSimo	Amelia Foo	Andrea Greenway	The Hockey Guy
Gerry Bellerive	Laurel and Noel Burke	Jonathan Coleman	Tam Do	Nancy Ford	Elaine Grenon	Randy Hoffman
Katie Benjamin and Brian Hikisch	Jeff Burton	Clara Coles	Quynh Doan	Amy Foreman	Christopher Griffin	Randy Hoffman
Ryan Benn	Susan Burton	Lindsay Colin	Bethany Dobson	Douglas Forseth	Dominique Gross	Paul Holder
Mason Bennett	Richard Bush	Leslie Collin	Vanessa Docherty	Rob Foster	Barbara Groundwater	Brett Holland
Rhiannon Bennett	Todd Butler	Katie Comley	Josh Dodman	Noel Fox	Cathryn Holler	Tanya Hook
Mike Bernemann	Matthew Butner	Sumeet Dogra	Sumeet Dogra	Elizabeth Fraser	Lorraine Grout	Tanya Hook
Dr. Victoria Bernstein	Marilyn Butt	Community Women's Initiative - UBC Medicine	Mary Patricia Doherty	Graham Fraser	Pamella and Christopher Grover	Wendy Horel
	Seath Cahley	Grant Connell	Mike Doman	Noah Freedman	Mike Grywacheski	Wallace Houston
		Andreas Conrad	Shirley and Scott Donald	Anna Freschi	Ashlea Gudeit	James Howey



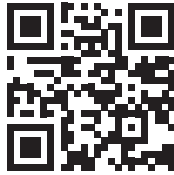
Jason Hsu	Stan Karajordanides	Amy Lee	Sharlene Mckie	Bing Monahan	Oldenburg	Anna Quijano
Tracy Hu	Serena Kassam	Daniel Lee	Jon McKinney	Margaret Monck	Gurch Ollek	Dolores Racine
Roy Huang	Terry Kaufenberg	Lisa Lee	James A. McKnight	Carla Mont	Doug O'Neill	Robert Radbourne
Susan Hughes	Gagandeep Kaur	Lisa Lee	Kelly McKnight	Robin Montcalm	Jaclyn O'Neill	Shahram Rafati
Rodger Huitema	Aaron Keay	Jocelyne Legal	Andrea Mclean	Jasmine Mooney	Alison Orr	Houtan Raffi
Gurdip Hulait	Adam Kelly	Nicole Legault	Carol McLean	Shannon Mooney	Robert Orr	Marion Ralston
Erin Humeny	Laura Kennelly-Mohr	Richard Leisen	Cynthia McLean	Cathie Moroney	Sam Orr	Jose Ramirez
Sandra Hunt Chomyn	Kelsey Kerr	Kevin Lemieux	Ruth McLellan	Clark Morris	Alannah Osborn	Kevin Ramsubhag
Valerie Hunt	Sheila and Hamish Kerr	Nicole Lenihan	Michael McLenaghan and C A Jones	David Morris	Betty Ann Osler	Danielle Rana
Devynn Hurford	Maresa Kesselman	Andrew Lepper	Amber McLennan and Peter Muench	Brad Morrison	Thomas Ostapchuk	Bill Randall
Lesley Hutton	Perry Keung	Gisele Lermen	Jean McLeod	Simon Mortimer-Lamb	Rebecca Ouwehand	Nancy Ranger
Tien Huynh	Sukhbir Khangura	Patrick Lermite	Margot McMillan	Kyle Morton	Alison Owens	Ray Brothers Investments Ltd
Jeff Hyslop	Latty Khosla	Elaine Leung	Anne McMullin	Margaret Mubanda	Pacific Rim Immigration Inc.	Gilbert Raynard
Patrice Impey	Allison Killam	Michael Leung	Cameron McNeil	Ron Muldoon	Kristin Padilla	Tammy Rea
Joe Inkster	Elva Kim	Thomas Leung	Margaret McNeil	Josh Mulherin	Dan Padovan	Samuel Reed
Andrea Ironside	Kimia Medical Professional Corporation	Jocelyn Lewis	Caren McSherry	Dave Mullen	Henrique Pagnossi	Harvinder Reehal
Ray Irvine	Adriane King	Suzanne Lewis	Mary Ellen & Katie Maasik	Loretta Mulligan	Chenoa Pamer	Elise and Richard Rees
Tanya, Dave, Zoe and Madison Itter	Genevieve King	Carol Liao	Chris MacCauley	Jennifer Munro and Blair Russel	Liana Pan	Cindy Reeves
Laura Iwan	Rob King	Nicole Liddell	Marilyn MacCrimmon	Murchie's Tea & Coffee Ltd.	Bharat Panchal	Refrew Holdings Ltd.
Susan Jackson	Ellyne Kinney	Miu Fong (Jannique) Lim	Emma Macfarlane	Joyce Murphy	Olivia Panis	Gloria Reger
Carole Jacques	Patricia Kirkham	Raphael Lim	Oriana Adele MacGregor	Megan Murphy	Yoo-Hyun Park	Conrad Rego
Brigham Jagger	Mary Ann Kmetic	Simon Lim	Tara Mackay	Megan Murphy	John Parks	Jennifer Reid
Tristan Jagger	Margie Knox	Yan Lim	Sheila Mackenzie	Jim Murray	Aashna Parmar	Peter Les Reid
Roumina Jamal	Karen Kobel	Lawrence Lin	Andrew Mackinnon	Nadri Korean Restaurant	Alison Parry	David Reilly
Laura Jamieson	Joslin Kobylka	Dave and Anna Lind	Sarah MacKinnon	Teddy Nafrey	Linda Parsons	Sandy and Max Reimer
Jennifer Janssen	Myrna Koffman	Teal Linde	Matthew MacLean	Christina Nairn	Aleta Patchell	Mariska Reinerink
Emily Jansson	Don Konantz	Anita Lindsay	Sheila MacMahon	Anne Naser	David Paterson	Paul Reinhart
Brenda Janzen	Michele Koo	Candy Ling	Ian Macmillan	Cyrus Navabi	Christine and Ross Patterson	Justin Reitz
Bundeep Jawanda	Sukhvir Kooner	Xuan Liu	Joan MacNab	Mario Negriz	Michelle Paulin	Elaine Reynolds and Ronald Zisman
Debbie Jay	Adam Kossack	Amber Loewen	Mei Madden	Alyson Neil	Bal Pawa	Natalie Reynolds
Kendre Jefferson	Paige Kraft	Ryan Lomas	Albert Mafimpa	Shelley Neil	Kathryn Pearson	Samantha Reynolds
Charlene Jenkins	Stephen Kramer	William Longstaff	Fred Mah	Carolyn Neilson and Christopher Frigon	George and Penny Pedersen	Launette Rieb
Eric Jensen	Stephen Kratzer	Andrew Lord	Lianna Mah and Jonathon Ng	Jennifer Randall Nelson	Ali Pejman	Dennis Ripoli
Somi Jeon	Marilyn and Robert Krell	David Lorenz	Nicole Mah	Kevin Nelson	Jill Pennefather	Rick Ripoli
Carole Jinks	Kacey Krenn	Jason Loscher	Ruby Mah	Lonnie Neufeld	Dan Perko	Alicia Roberts
Aussie Jiwani	Tim Kroetsch	Danielle Lovell	Danielle Melia	Roderick Neufeld	James Peters	Caitlin Roberts
Cody Johanson	Natasha Krotez and Charlene Menezes	Betty Anne Loy	M. June Melnychuk	Tony Neumeyer	Jotham Peters	Linda Roberts
Curtis Johansson	Moyna Krusell and Richard Bennett	Joe Lucke	Melnyk Financial Planning and Investments Ltd	William New	Mark Peters	Martin Roberts
Sharon and Kenneth Johns	Stacy Kuiack	Andrew Lugsdin	Meme Brooks Design	New Faces Leaders Program at David Thompson Secondary	Sheryl Peters	Jane and Paul Robinson
Chris Johnson	Leora Kuttner	Jerilynne Luna	Marlon Mencl	Shannon and Brad Newman-Bennett	Wendy Petersen	Kevin Rokosh
Joy Johnson	Jeff Kuwica	Mike Lynch	Susan Mendelson	Art Ng	Andrew Petter	Pat Rose
Ray Johnson	Karen Kwok	Lynn Valley Garden Club	Alison Meredith	Peggy Ng	Jeff Petter	Dan Roselli
Stephanie Johnson	Ethan Lai	Andrew Lynn	Dylan Merrick	Bernadette Nguyen	Andy Pham	Joseph Rosen
Ewen Johnston	Bee Lalli	Corina Lynn	Catherine Mezei	Tien Nguyen	Janet Phelps	Liane Ross
Gladys and Allan Johnston	Leon Lalsingh	Stephanie Lynn	John Middleton	Leo Nicolaas	Irene Pickell	Pat Ross
Ken Johnston	Brian Lam	Rita McAllen	Renata Marie Mihailoff	Daniel Nieto	Kevin Pickell	Mr. Richard A. Ross and Ms. Dawn E. Polley
Louise Johnston	Alex Lando	Emily McCartney	Mike Bike	Paul Nijjer	April Pierce	Vicky Ross
Catherine Jones	Barbara Lane	Cameron Mccaw	Sven Milelli	Josh and Michelle Nilson	Lisa Pietrow	Jeff Roth
Christine Jones	Greg Lane	Heather McCaw	Greg Miles	Gino Nonni	Christine Pilkington	Clee Rowel
Linda Jones	Langley Chinese Moms' Group	Zachary McCrea	Alastair and Annette Miller	Karen Nordlinger	Simon Pimstone	Annett Rozek
Dan Jordan	Troy Lanigan	Pamela and Cecil McCullough	Ashley Miller	Dominique Norville and Simon Davie	Bruce and Gwen Piper	Gail Ruddy
Marella Joseph	Theresa Lannan	Joyce McCusker	Charlotte Miller	Julia Nyberg and Alexander Moss	Planful	Eric Ruggieri
Hannah Julian	Irving Laskin	Lisa McDougall	Dianne Miller	Michael O'Cain	Katy Player	Ann Rumsby
Bruce Jung	Jean Latham	Bev McDowell	Nancy Miller	Shane O'Donnell	Dr. Erika Plettner	Lisa Rupert
Jeanette Jung	Dr. Brenda Lau	Daniel McGauley	Stan Miller	John O'Donoghue	Pontem Consulting Group Ltd.	Alyssa Rutherford
Heather Kaart	Michael Law	James McGregor	Patricia Milne	Marlie Oden and Ken Newbert	Greg Poole	Susie and Rob Ruttan
Kado Flowers	Katherine Lazaruk	Janice Mcrenere	Michelle Mina	Wendy Odwyer	Edoye Porbeni	Laura Ryan
Paolo Kalaw	Louise Leathley	Cathie McGuire	Paul Miskimmin	Gina Ogilvie	Ingrid Potter	Laura Ryan
Ken Kamminga	Francine LeBlanc	Lauren McHoul	Adam Mitchell	Ralph Ogilvie	Deborah Power	Neal Ryan
Dee Kane	Jordan Leck	Paula McInnis	Marnie Mitchell	Gina Ogilvie	Darlene Prosser	SML Consultants Group Ltd.
Margo Kane	John Lecky	Sharon McIntee Birrell	Sheena Mitchell	Dr. Douglas and Marion	Bernadette Pughe	Etab Saad
Goldy Kang	Patrick Lecky	Rob McJunkin	Andrew and Susan Molloy		Louise and Robert Quart	Jonathan Saba

Jeremy Sales	Tony Simmons	Janet Sturdevant	Karen Truscott	Bob Watt	Christine Yaco	Onni Group
Pat Sam	Richard Sims	Inde Sumal	Rubens Tse	Chuck We	Emad Yacoub	Rethink Communications
Kassie Sambaraju	KD Singh	Sunday Soy Candle Corp.	Chontelle Tuck	Jocelyne Weatherly	Daisy Yang	Andrey Safonov
Raymin Samra	Richi Singh	David Sung	Bill Tucker	Karen Webb	Sherry Yano	Isabelle Tang and Orange Youth Volunteers
Dawn Sandberg	Shane Singh	Judy Sung	Richard Tucker	Anne Webster	Yayoi Maruno	United Way TransLink Compass Pass Distribution Program
Aman Sandher	Shirley Sio	James Sutcliffe	Chris Tutton	Hedy Wei	Lisa Yeates	Dr. Kim van der Woerd and Dr. Ron Roesch
Paul Sandhu	Matthew Sisman	Margaret Sutcliffe	Stephen Tyler	Richard Weiland	Gwendolyn Yip	Vancouver Food Runners
Anne Sandor	Maria Siy	Randy Swant	Sean Ungemach	Jane and Gerry Weiler	Germaine Yoneda	T.W. Wong
Sonja Sanguinetti	Cary Skidmore	Danielle Swift	Alvin Unger	Louise Weir	Daniel Yoo	Youth Leadership Society of BC
Kimberley Santerre	Amanda Skoll	Ianne Sy	Pete and Kelly Unger	Derek Welbourn	Howard Young	Sam Zeitoun
Wayne Sarna	Kirsten Slenning	Gwynfor Symmons	Unitrend Plastics Mfg	Anita Welke	Ivy Loree Young	Anonymous Donor
Anton Scamvougeras	Cathy Smith	Synergy Business Lawyers LLP	Tamara Van Den Brink	Vanessa Wellington and John Clark	Andrea (Ke Feng) Yuan	<b>2021 Women of Distinction Awards</b>
Paul Scanlon	Greg Smith	Winston Szeto	Elijah Van Der Giessen	Eleanore Wellwood	Kai Yuen	<b>Presenting Sponsor</b>
Marina Scattolin	Gwen Smith	Elizabeth Wreford Tait	Jennier Van Evra	Theresa and Garry Weltzin	Vania Yuen	Scotiabank
Caroline Scheumann	Hannah Smith	David Takagawa	Keri van Gerven	Elizabeth West	Devina Zalesky	<b>Legacy Sponsors</b>
Carol Schneider	Julia Smith	Oliver Talento	Rita Vander Raadt	Mark West	Lynn Zanatta	BCAA
Kathleen Schneider	Ruby Smith	Winnie Tam	Bart Vanstaalduinen	Lynn & Bill Weymark	Sam Zeitoun	Clio
Glenn Schoenroth	Stephanie Smith	Roger Tangry	Dr. Jan Venter	Deirdre Whalen	Melissa Zimmerman	iA Financial Group
Melina Scholefield	Moira Smyth	Brad Tanjerd	James Vercammen	Sally Whitehead	91 Anonymous Donors	MDA
Anne Schroder	The late Marian Snowball	Morgan Tanner	Patricia Vertinsky	Mark Whiting	<b>3rd-Party Events</b>	Nature's Path
Elizabeth and George Scott	Cynthia Soboren	Vikas Tanwar	John Vickerstaff	Jule Whitmore	Art Affair	Pacific Blue Cross
Suzanne Scott	Ilya Solnyshkin	Diana Tchakalian	Rose Vidas	Maureen Whittall	Rock N the Park	Reciprocal Consulting
Jennifer Scrubb	Suzanne Solven	Braham Teja	Judy Villeneuve	Elizabeth Whynot	<b>In Kind Donors</b>	SAP
Noha Sedky	Karim Somji	Julia Tennant	Anisha Virani	Ian Whyte	Ava, Lola, Shoshana and York House Senior School Students	Seaspan
Kristen Seer	Ashwin Sood	Luleseged Joseph T-Giorgis	Haneef Virani	Chris Wick	AG Hair	UBC Sauder School of Business
Danielle Segal	Rosalie Soregaroli	Penelope Tham	Karim Virani	Ernie Wiens	Ainsliewear	<b>Creating Change Sponsor</b>
The Senft Family	Andrea Southcott	Tracy Theemes	Chelsea Virji	Penny Willett and Graeme Robinson	Atlas Pots	Amazon Canada
Jordan Sengara	Dianne Sparrow	Martin Thibodeau	Ron Vit	Don Williams	Authority Media	<b>Tribute Sponsor</b>
Nicole Senger Maas	Tatiana Specht	John Thiessen	Ruth Vodden	Josephine Williams	Carel and Dick Ballard	Absolute Software
Don Shahan	Tony Specken	Justin Thompson	Olga Volkoff	June Williams	Julia Bennett	Copperleaf
Janis Shandro	Gale Spick	Keith Thompson	Kevin Volz	Kate Williams	Ricky Biring	<b>Patron Sponsors</b>
Judy Shane	Adina Spivak	Michael Thompson	Christine Vukusic	Michael Williams	Canadian Health Food Association	BC Housing
Keith Sharman	The Spothelfer Family	Rachael Thompson	Louis Wadsworth	Shelley Williams	Chard Development Ltd.	Say Love Projects
Kevin Sharp	Derek Spratt	Sean Thompson	Rick Wagner	PG Wilcox MD FRCPC Inc.	Cause We Care Foundation	The Printing House Ltd.
Apurva Shaw	Sharon St Michael	Tania Thompson	Vivian Wai	Eric Wilson	Cultivate Canada Society	<b>Media Sponsors</b>
Pat Shaw	Aileen Stalker	Walter Thornton	Julie Walchli	Ken Wilson	Face the World Foundation and Herrendorf Family Foundation	Global BC
Kyle Shearer	Scott Stanger	Jocelyn Tien-Wong	Stephen Wall	Kyle Wilson	FreshPoint	Global News Radio 980 CKNW
Michael Shein	Darren Starek	Barbara Tili	Kate Wallace	Ryan Wilson	Gray Seas Fishing Ltd	Miss604
Jim Shepard	Janice Stasiuk	Alison Tillman	Shari Wallace	Scott Wilson	Ismaili Council for BC	
Philippa Shepherd	Heather Stephenson	Mark Toews	Jakob Walter	Geoff Wiltshire	Lush Handmade Cosmetics Ltd.	
Eric Sherbine	Sandra Stevenson	Patricia Tolmie	Joanne Walton	Kelly Wolf	Tim and Shirley Manning	
Tom Shiffman	Anna R. Stewart	Steve Toms	Alex Wan	Amy Wong	Methanex	
Jane Shin	Chuck Stewart	Jason Tonin	Katrina Wang	Brenda Wong	Joanna Mukai	
Noah Shipman	Diane and Alan Stewart	Manpreet Toor	Keith and Miriam Ward	Kevin Wong	Murchie's Tea & Coffee Ltd.	
Hussein Shivji	Jan Stimpson	Kevin Torvik	Patricia Ward	Robyn Woodward	New Faces Leaders Program at David Thompson Secondary	
Miah Shull Olmsted	Bob Stokes	Megan Tory	Mark Waslen	Heather Workman		
Karen Shuster	Lora Stone	Robert Toth	Johanna Watd	Patricia Woroch		
Duane Siegrist	Mary Stott	Shauna Towriss	J Robert Waterman	Julie Wright		
Corinne Sigouin	Tina Strehlke	Deborah Track	Janet Waterman	Sharon Xie		
Sandra Sigur	Tracy Stuby	Claudia Tran-Nguyen	Braeden Waters	Kessie Xu		
Eric Simmons	Kent Stuehmer	Brian Travis	Whitney Watson			



# SUPPORT OUR WORK

**FOR IMMEDIATE  
IMPACT, DONATE  
ONLINE NOW**



## DONATE

Your gift ensures that families across Metro Vancouver get the resources they need to build community, gain financial stability and move toward their goals.  
[ywcavan.org/donate](http://ywcavan.org/donate)



## JOIN

YWCA Health + Fitness offers two modern, co-ed fitness facilities in downtown Vancouver. Revenues support programs for local women and families.  
[ywcavan.org/fitness](http://ywcavan.org/fitness)



## VOLUNTEER

Give back by mentoring, lending your skills and more. Our website features opportunities for individuals and groups.  
[ywcavan.org/volunteer](http://ywcavan.org/volunteer)



## STAY

The YWCA Hotel provides affordable accommodations for local and international travelers, while generating funds that support local families.  
[ywcavan.org/hotel](http://ywcavan.org/hotel)



YWCA Metro Vancouver  
535 Hornby Street  
Vancouver, BC V6C 2E8

tel 604 895 5850  
fax 604 684 9171  
[donations@ywcavan.org](mailto:donations@ywcavan.org)  
[ywcavan.org](http://ywcavan.org)

